



PRICED AT
\$692,800

 2600 Sq Ft

 3 Beds

 2.5 Baths

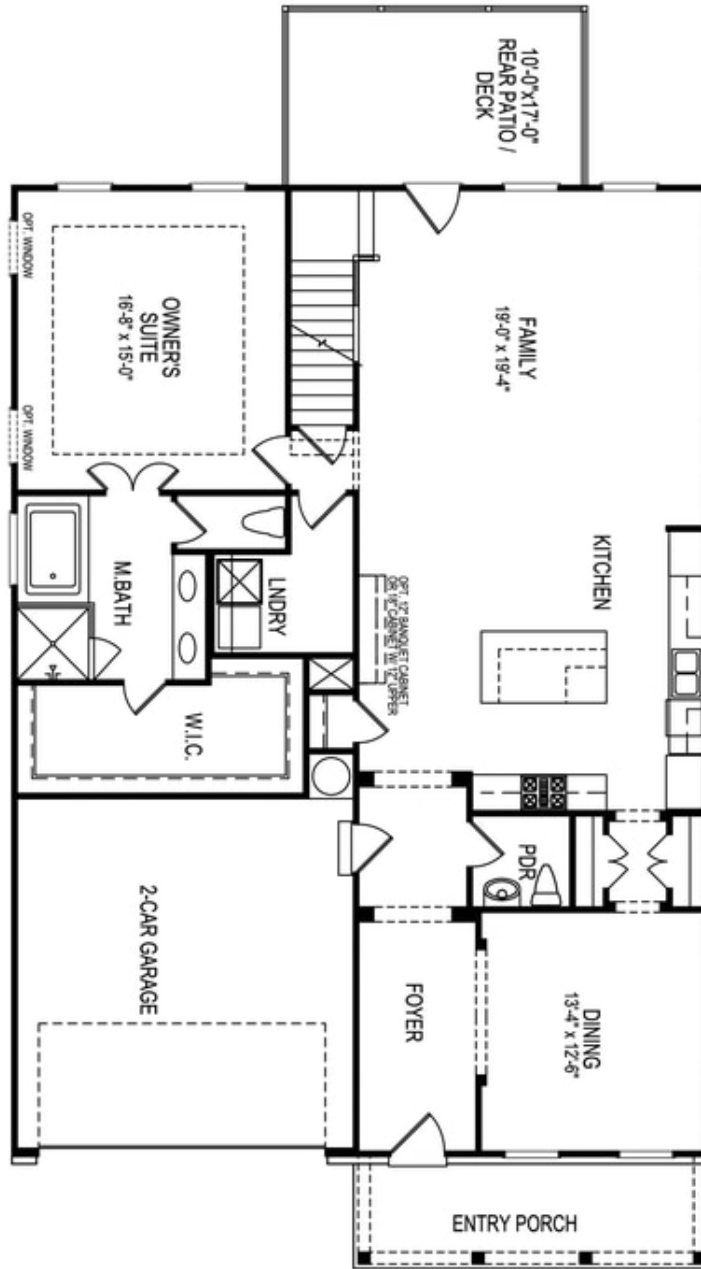
 2 Car Garage

 2.0 Story

Sizzling Summer Savings with \$25K Your Way. See Agent for details! This Madilyn floor plan with unfinished BASEMENT is located on a must see private wooded home site. This elegant READY NOW home features all the best that The Providence Group has to offer. The chefs kitchen will make you swoon and features white cabinets stacked to ceiling, a magnificent white porcelain farm sink, gold hardware, luxe gold faucet, quartz countertops and over-sized pendants above the stained wood island. There is also a private dining room that seats 12 with a beautiful gold oversized chandelier. Leading from the dining room through to kitchen is a butlers pantry. The kitchen opens to the family room with a dramatic fire place and tons of natural light. The owners suite is located on the MAIN floor and has a large walk in closet and serene bath with mega shower and dual vanity. Stained hardwood stairs lead to a second floor loft space, 2 oversized bedrooms and a Jack and Jill full bath. Full day light basement already stubbed for a bathroom. Perfect for a quick finish or just TONS OF STORAGE.

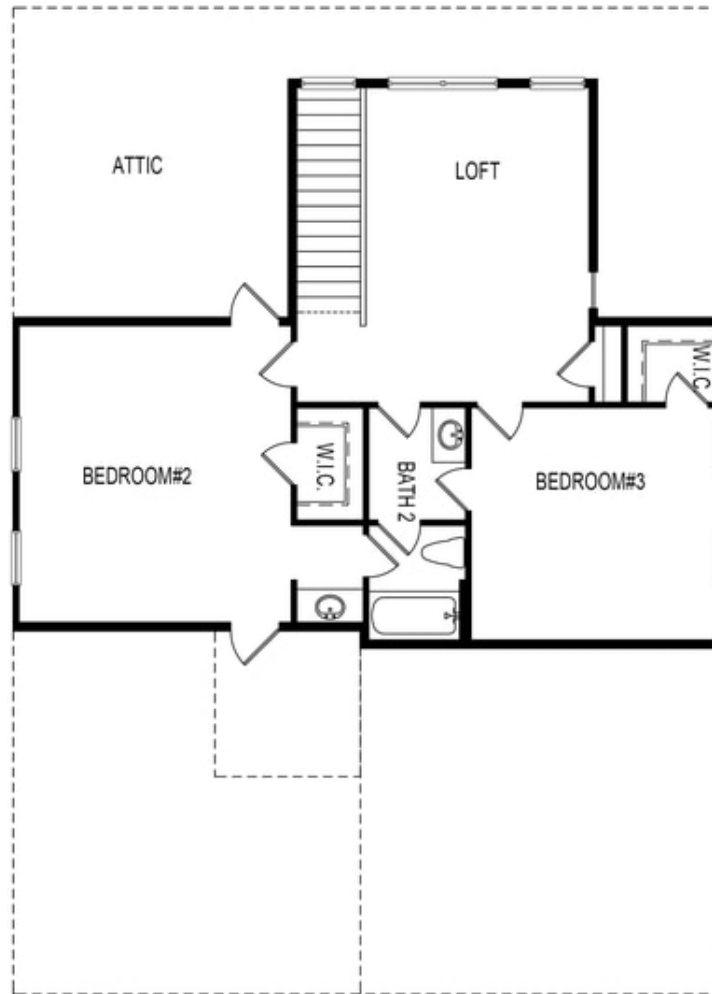
**Want to Know More
About This Home?**

CONTACT OUR COMMUNITY SALES MANAGER
Call Us @ 470.509.9931



Want to Know More
About This Home?

CONTACT OUR COMMUNITY SALES MANAGER
Call Us @ 470.509.9931

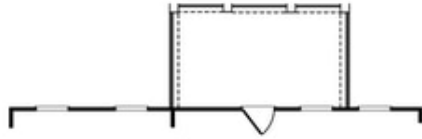


Second Floor

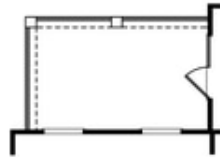
**Want to Know More
About This Home?**

CONTACT OUR COMMUNITY SALES MANAGER
Call Us @ 470.509.9931

Options



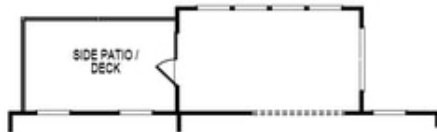
OPT Covered Patio/Deck



OPT Covered Side Patio/Deck



OPT Fireplace
 w. Opt Built-Ins



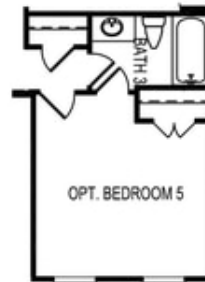
OPT Sunroom



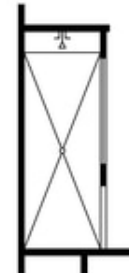
OPT Butler's Pantry



OPT Bedroom 4 ilo Loft



OPT Bedroom 5
 ilo Dining Room



OPT Owner's
 Walk-In Shower

**Want to Know More
 About This Home?**

CONTACT OUR COMMUNITY SALES MANAGER
 Call Us @ 470.509.9931