



PRICED AT  
**\$585,200**

 2205 Sq Ft

 3 Beds

 2.5 Baths

 2 Car Garage

 2.0 Story

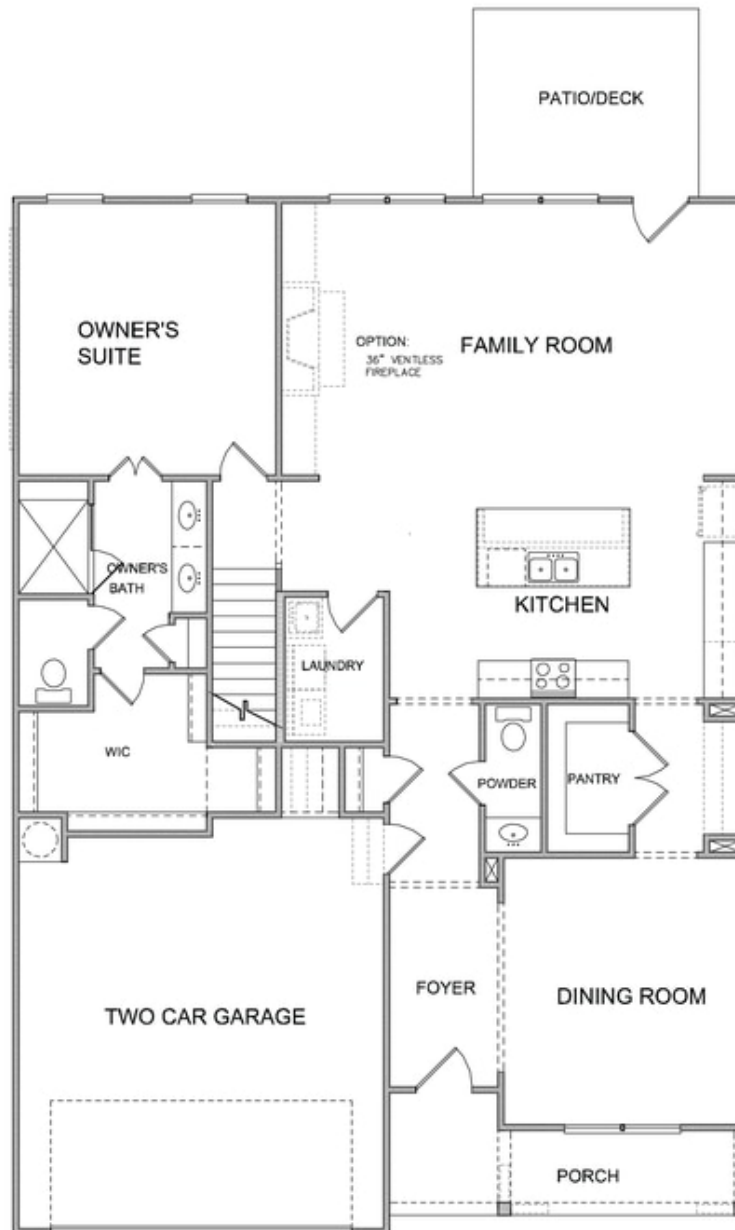
Elevate your life in 2023 with a new home by The Providence Group and \$5,000 towards closing cost when financing with one of Seller's 4 preferred lenders. An elevated design and life style is offered when choosing a Providence Group Home.. Welcome to the Morgan floorplan with a beautiful farmhouse exterior including a covered front porch and foyer entry with 10' first floor ceilings. Enjoy a master on the main that features a double vanity, large walk in shower and huge walk in closet. Chefs kitchen has beautiful design finishes including white stacked to ceiling cabinets at the perimeter, an oversized island with quartz countertops, white picket style tile backsplash and single bowl stainless sink. Natural light throughout this beautiful home. The formal dining room seats twelve and features butlers pantry and pantry. The dramatic floor to ceiling vertical shiplap surround fireplace creates the wow for this home. Seven foot windows and eight foot solid doors along with the ten foot ceiling heights in every room. The upper floor has 2 secondary bedrooms, a shared bath, and a large loft that could double as an office or media room. This home will not last at this price point. Walking trails, ...

**Want to Know More  
About This Home?**

CONTACT OUR NEW HOME NAVIGATOR

**NONE**

Call Us @ (470) 509-9931

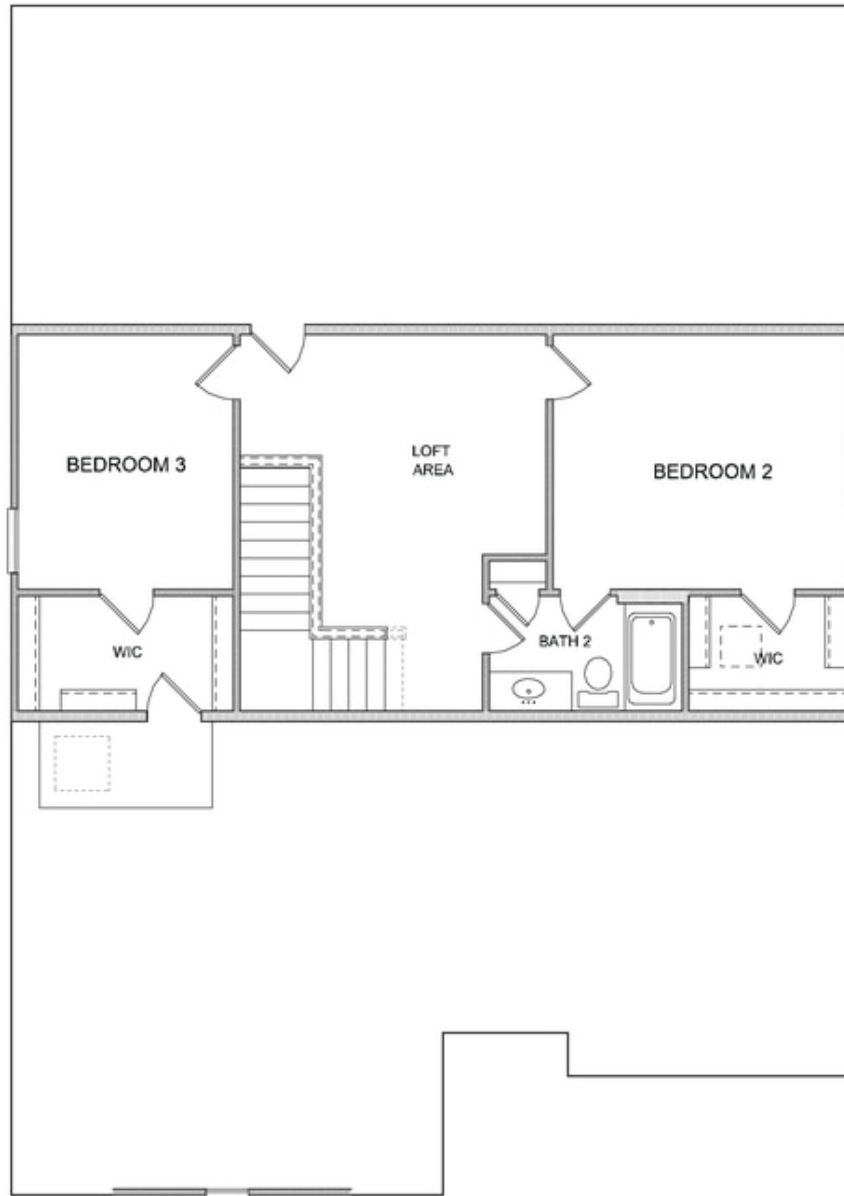


**Want to Know More  
About This Home?**

CONTACT OUR NEW HOME NAVIGATOR

**NONE**

Call Us @ (470) 509-9931

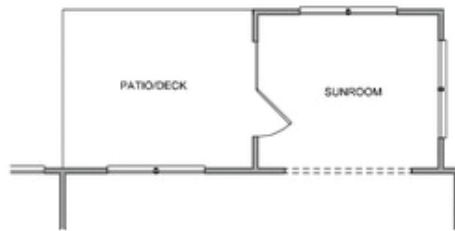


**Want to Know More  
About This Home?**

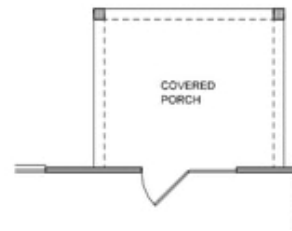
CONTACT OUR NEW HOME NAVIGATOR

**NONE**

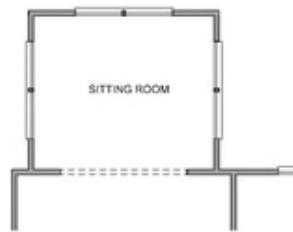
Call Us @ (470) 509-9931



Opt. Sunroom



Opt. Covered Porch



Opt. Sitting Room

**Want to Know More  
About This Home?**

CONTACT OUR NEW HOME NAVIGATOR

**NONE**

Call Us @ (470) 509-9931