



PRICED AT  
**\$590,135**

 **2205 Sq Ft**

 **3 Beds**

 **2.5 Baths**

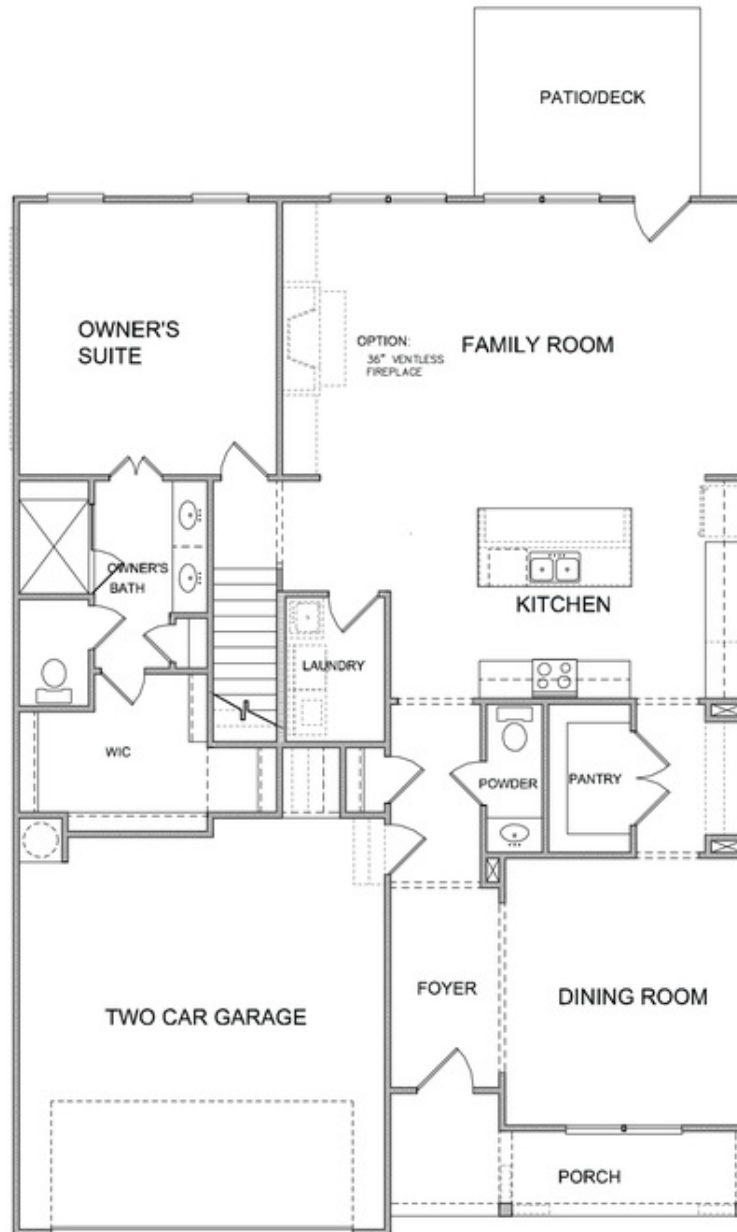
 **2 Car Garage**

 **2.0 Story**

Elevate your life in 2023 with a new home by The Providence Group and \$5,000 towards closing cost when financing with one of Seller's 4 preferred lenders. An elevated design and life style is offered when choosing a Providence Group Home.. Owners Suite is on the MAIN and features a double vanity, large walk in shower and huge walk in closet. Gorgeous designer kitchen has beautiful finishes including white stacked cabinets to ceiling at the perimeter, an oversized midnight navy island with quartz countertops, luxe gold faucet and cabinet hardware. The formal dining room seats twelve and the pass through to the kitchen hosts a butlers pantry and huge walk-in pantry for all your staples. Warm up in the family room by the painted white brick fireplace and a natural box beam mantle. 7' windows allow for so much natural light throughout this home. 8' foot solid doors along with the 10' ceiling heights in every room. The upper floor has 2 secondary bedrooms, a shared bath, and a large loft that could double as an office or media room. This home will not last at this price point. Walking trails, pickleball, fire pit, clubhouse, pool, and much more.

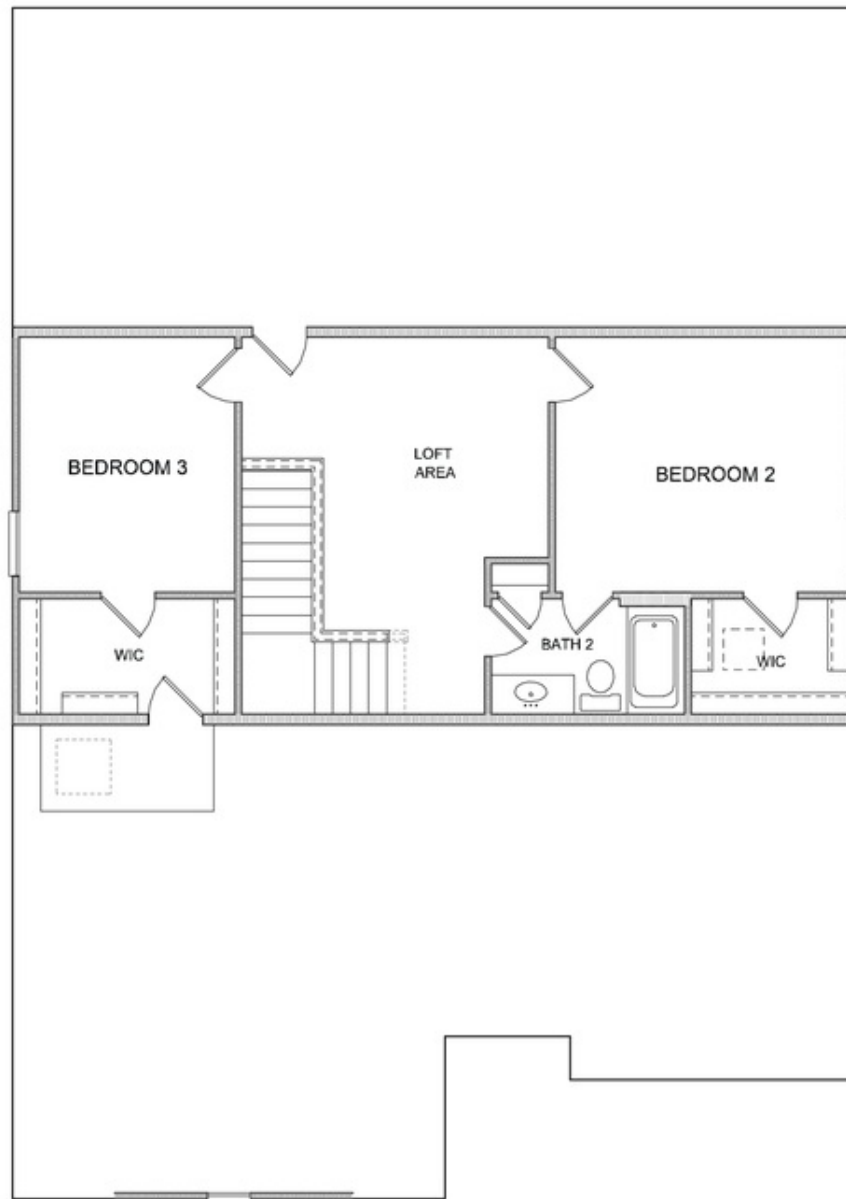
Want to Know More  
About This Home?

CONTACT OUR COMMUNITY SALES MANAGER  
Call Us @ 470.509.9931



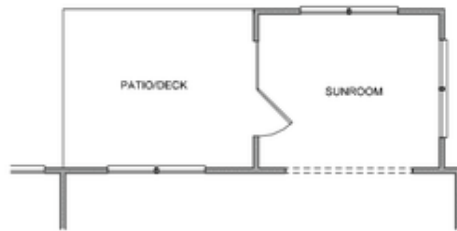
Want to Know More  
About This Home?

CONTACT OUR COMMUNITY SALES MANAGER  
Call Us @ 470.509.9931

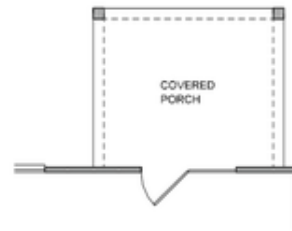


Want to Know More  
About This Home?

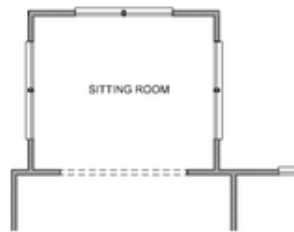
CONTACT OUR COMMUNITY SALES MANAGER  
Call Us @ 470.509.9931



Opt. Sunroom



Opt. Covered Porch



Opt. Sitting Room

Want to Know More  
About This Home?

CONTACT OUR COMMUNITY SALES MANAGER  
Call Us @ 470.509.9931