



PRICED AT  
**\$554,405**

 2205 Sq Ft

 3 Beds

 2.5 Baths

 2 Car Garage

 2.0 Story

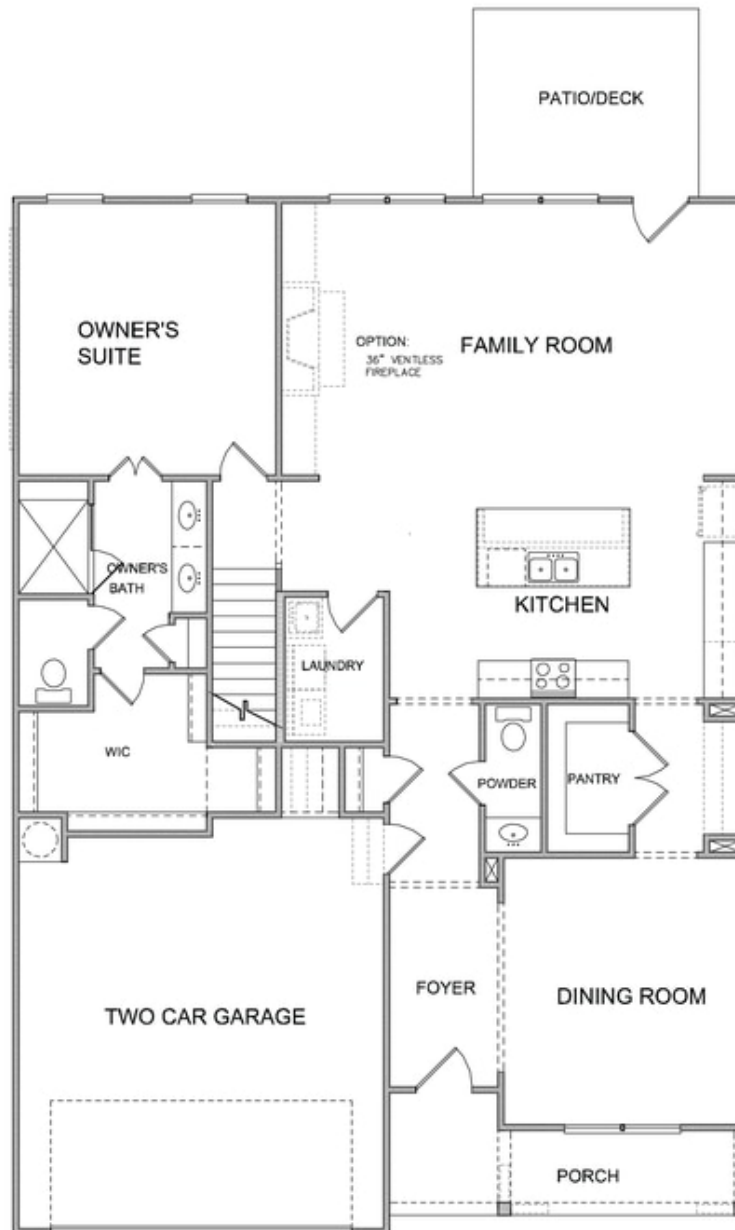
Elevate your life in 2023 with a new home by The Providence Group and \$5,000 towards closing cost when financing with one of Seller's 4 preferred lenders. An elevated design and life style is offered when choosing a Providence Group Home.. Enjoy a master on the main that features a double vanity, large walk in shower and huge walk in closet. Chefs kitchen has beautiful design finishes including white Stack to ceiling cabinets at the perimeter and Gray oversized island with quartz countertops. Natural light through out this beautiful home. The formal dining room seats twelve and features a butlers pantry and a large walk in pantry. The dramatic floor to ceiling fire place creates the wow for this home. Seven foot windows and Eight foot solid doors along with the ten foot ceiling heights in every room. The upper floor has 2 secondary bedrooms, a shared bath and a large loft that could double as an office or media room. Many designer upgrades makes this home a beauty! This home will not last at this price point. Idylwilde offers life style. Walking trails, pickle ball, fire pit, club house, pool, and much more.

**Want to Know More  
About This Home?**

CONTACT OUR NEW HOME NAVIGATOR

**NONE**

Call Us @ (470) 509-9931

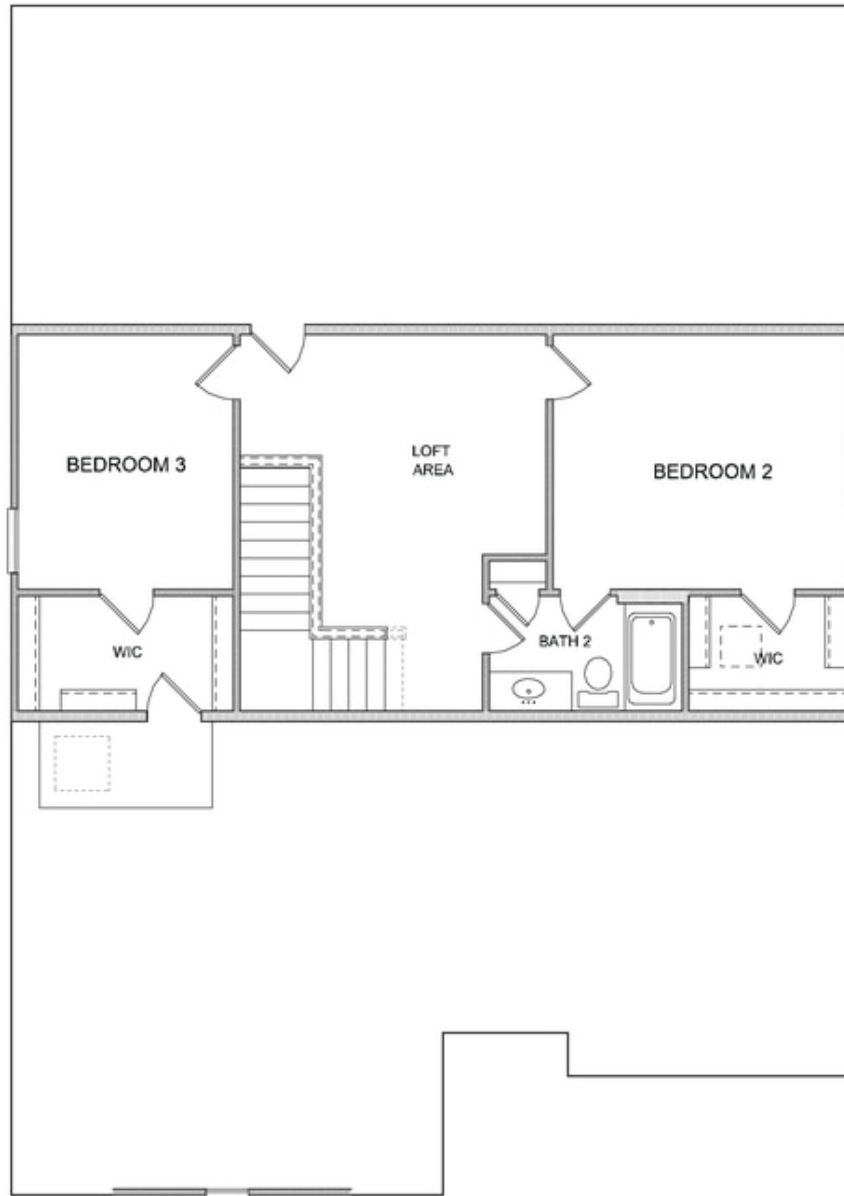


Want to Know More  
About This Home?

CONTACT OUR NEW HOME NAVIGATOR

**NONE**

Call Us @ (470) 509-9931

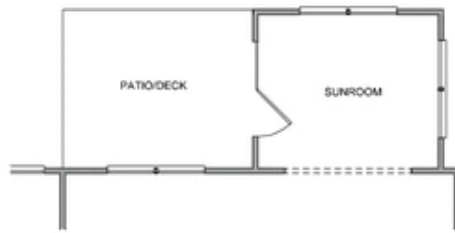


**Want to Know More  
About This Home?**

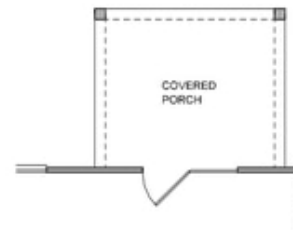
CONTACT OUR NEW HOME NAVIGATOR

**NONE**

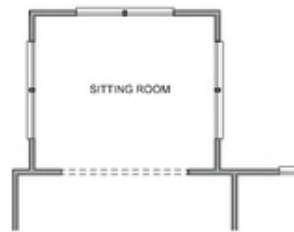
Call Us @ (470) 509-9931



Opt. Sunroom



Opt. Covered Porch



Opt. Sitting Room

**Want to Know More  
About This Home?**

CONTACT OUR NEW HOME NAVIGATOR

**NONE**

Call Us @ (470) 509-9931