



PRICED FROM
\$526,400

 **2,264 - 2,432 Sq Ft**

 **3 Beds**

 **3 - 3.5 Baths**

 **2 - 3 Car Garage**

 **2.0 Story**

- **Gourmet Kitchen with Large Island overlooking Dining Area and Grand Room**
- **Laundry and Guest Bedroom on Main Level**
- **Additional Bedroom and Office Space on Upper Level**
- **Optional Basement**
- **Two-Car Front Entry Garage**

[Read More Online](#)

Available Elevations



Elevation A



Elevation B



Elevation C



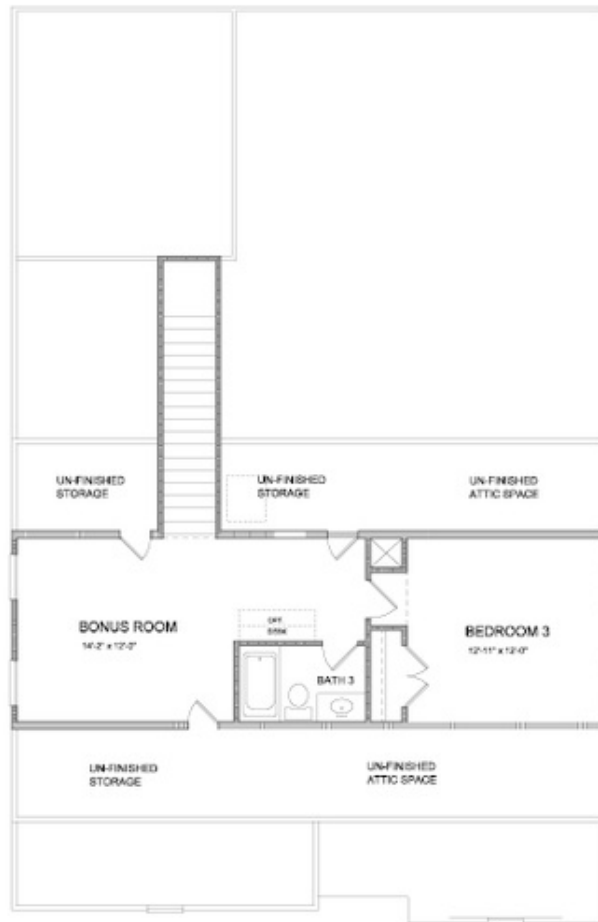
Elevation D

Please refer to actual blueprints for an accurate representation of home design. Home design and elevations subject to change without prior notice. Window, door and porch locations may vary by elevation. Subject to error, omission or withdrawal.



Want to Know More
About This Home?

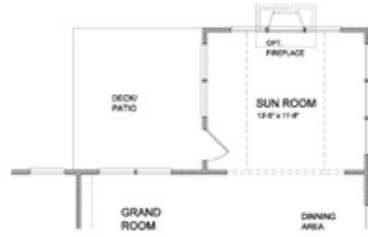
CONTACT OUR COMMUNITY SALES MANAGER
Call Us @ 470.509.9931



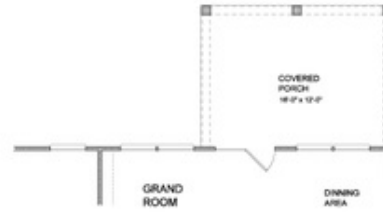
SECOND FLOOR

Want to Know More
About This Home?

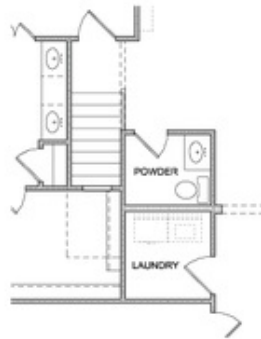
CONTACT OUR COMMUNITY SALES MANAGER
Call Us @ 470.509.9931



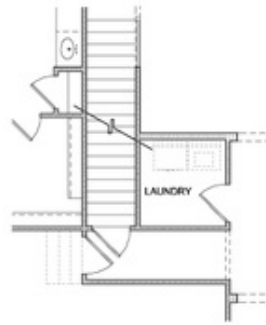
Opt. Fireplaces



Opt. Covered Porch



Opt. Powder Room



Opt. Laundry Room
 (with basement)



Opt. Laundry Room
 (with sink)

OPTIONS - FIRST FLOOR

Want to Know More
 About This Home?

CONTACT OUR COMMUNITY SALES MANAGER
 Call Us @ 470.509.9931