



PRICED FROM
\$552,400

 2,997 Sq Ft

 4 Beds

 3.5 Baths

 2 Car Garage

Owner's Suite on Main Level with His and Her Walk-In Closets and Dual Vanities Spacious Gourmet Kitchen with Island with Bar Seating Overlooking Breakfast Room Optional Layout Offering Two Owner's Suites and up to 5 Bedrooms Secondary Bedrooms Feature Private or Shared Full Bath Large Storage Area on Upper Level

[Read More Online](#)

Available Elevations



Elevation A



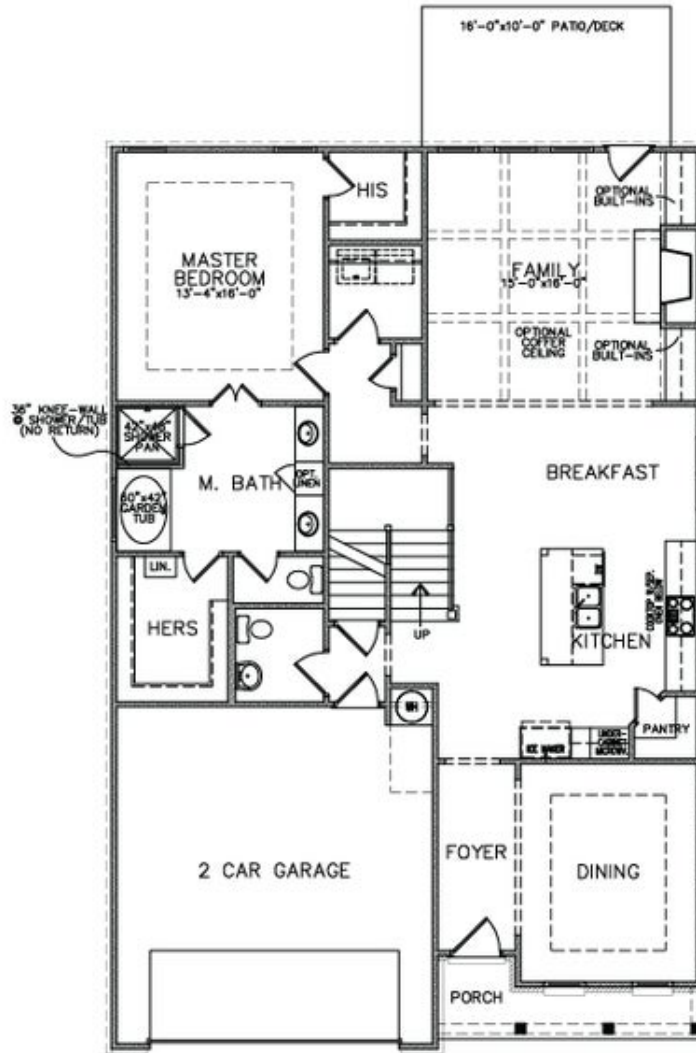
Elevation B



Elevation C



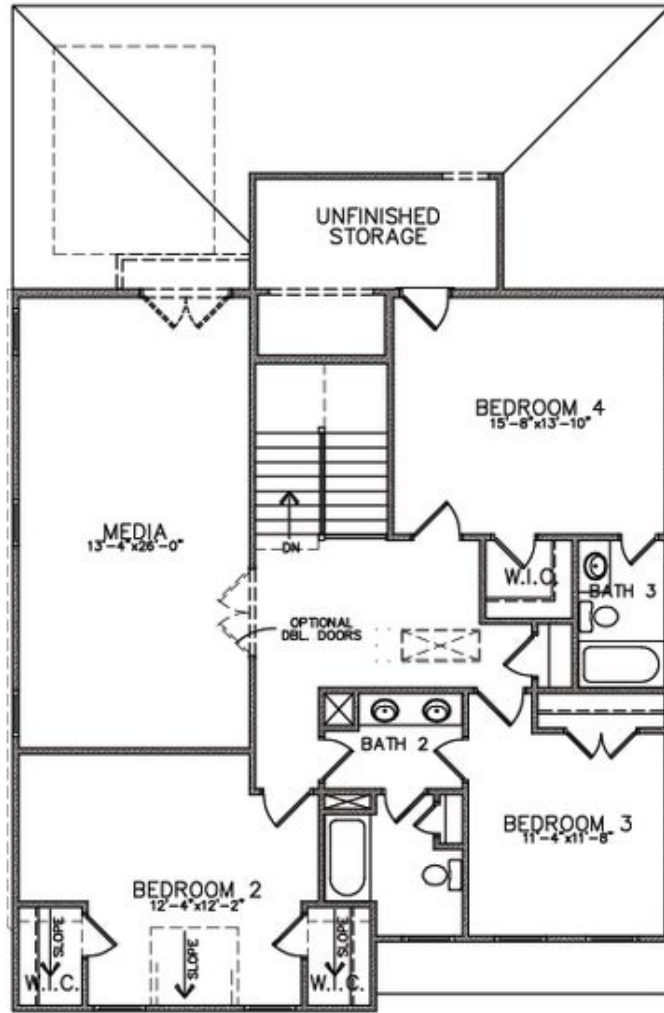
Elevation D



Elevation C

Want to Know More
About This Home?

CONTACT OUR COMMUNITY SALES MANAGER
Call Us @ 470.509.9931

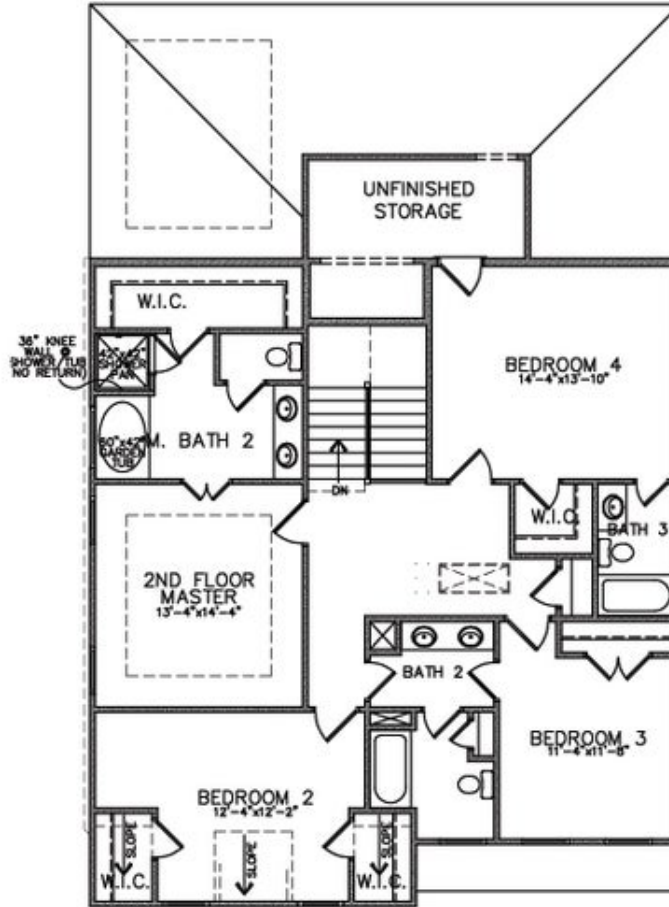


Elevation C

Want to Know More
About This Home?

CONTACT OUR COMMUNITY SALES MANAGER
Call Us @ 470.509.9931

Optional
Dual Owner Suites



Elevation C

Want to Know More
About This Home?

CONTACT OUR COMMUNITY SALES MANAGER
Call Us @ 470.509.9931