



PRICED FROM  
**\$536,400**

 2,594 - 2,764 Sq Ft

 3 - 5 Beds

 2.5 - 3 Baths

 2 Car Garage

 2.0 Story

- Gourmet Kitchen with Island overlooking Dining and Family Room
- Owner's Suite and Private Bath with Dual Vanities and Over Size Walk-In Closet on Lower Level
- Secondary Bedrooms on Upper Level
- Two Car Garage

[Read More Online](#)

## Available Elevations



Elevation A



Elevation B

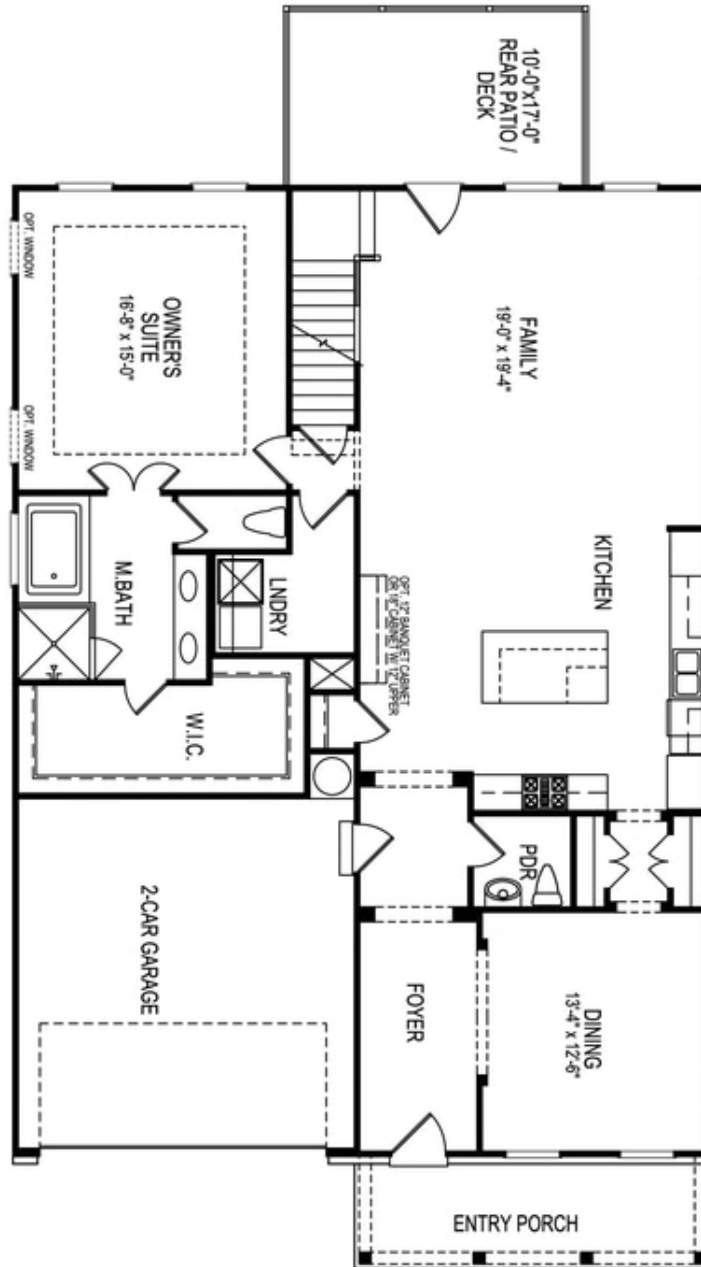


Elevation C



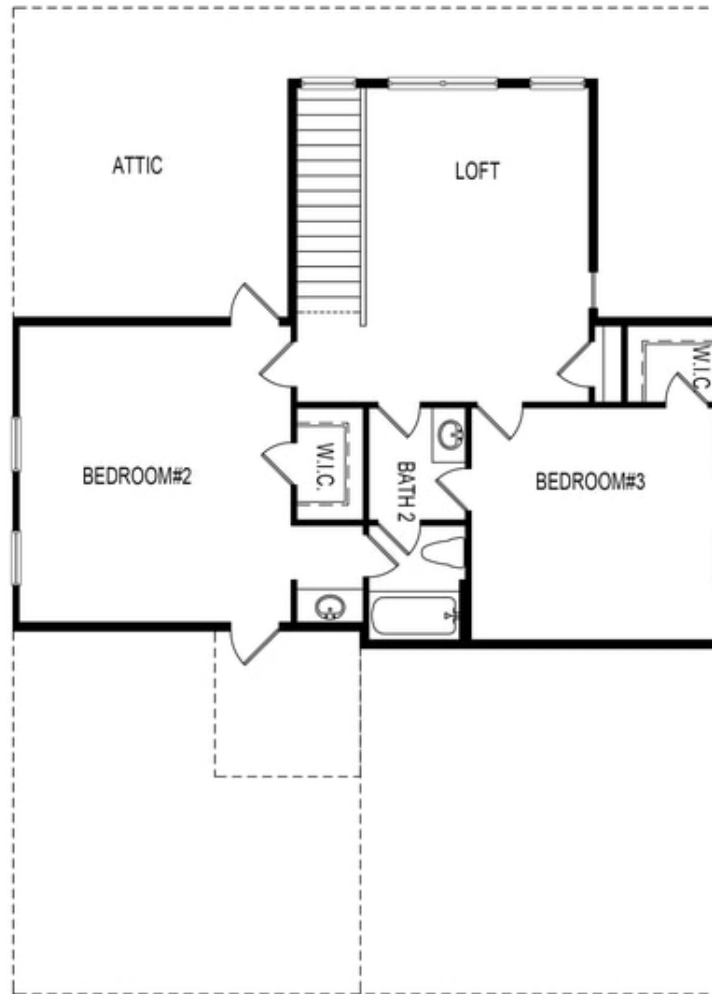
Elevation D

Please refer to actual blueprints for an accurate representation of home design. Home design and elevations subject to change without prior notice. Window, door and porch locations may vary by elevation. Subject to error, omission or withdrawal.



**Want to Know More  
About This Home?**

CONTACT OUR COMMUNITY SALES MANAGER  
Call Us @ 470.509.9931

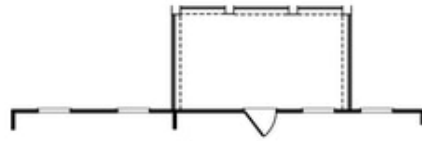


Second Floor

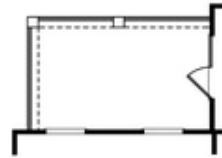
**Want to Know More  
About This Home?**

CONTACT OUR COMMUNITY SALES MANAGER  
Call Us @ 470.509.9931

Options



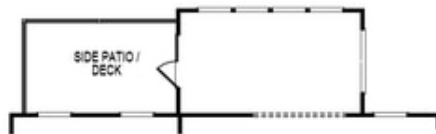
OPT Covered Patio/Deck



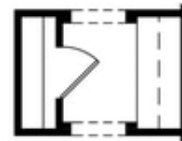
OPT Covered Side Patio/Deck



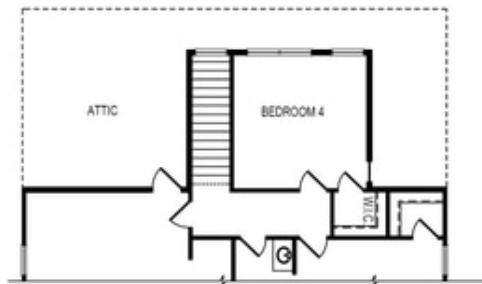
OPT Fireplace  
w. Opt Built-Ins



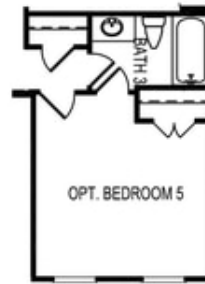
OPT Sunroom



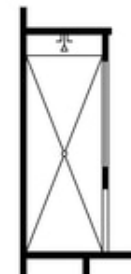
OPT Butler's Pantry



OPT Bedroom 4 ilo Loft



OPT Bedroom 5  
ilo Dining Room



OPT Owner's  
Walk-In Shower

Want to Know More  
About This Home?

CONTACT OUR COMMUNITY SALES MANAGER  
Call Us @ 470.509.9931