



PRICED FROM  
**\$470,900**

 2,424 Sq Ft

 3 Beds

 2.5 Baths

 2 Car Garage

- Gourmet Kitchen with Island Overlooking Family Room and Outdoor Living
- Formal Dining Room with Easy Access to Family Room and Kitchen
- Owner's Suite on the Main Level with Walk-In Closet and Bath with Dual Vanities, Separate Tub and Shower
- Large Secondary Bedrooms with Shared Full Bath
- Upper Level Retreat and Spacious Loft
- Private Courtyard and Two-Car Rear Entry Garage

[Read More Online](#)

## Available Elevations



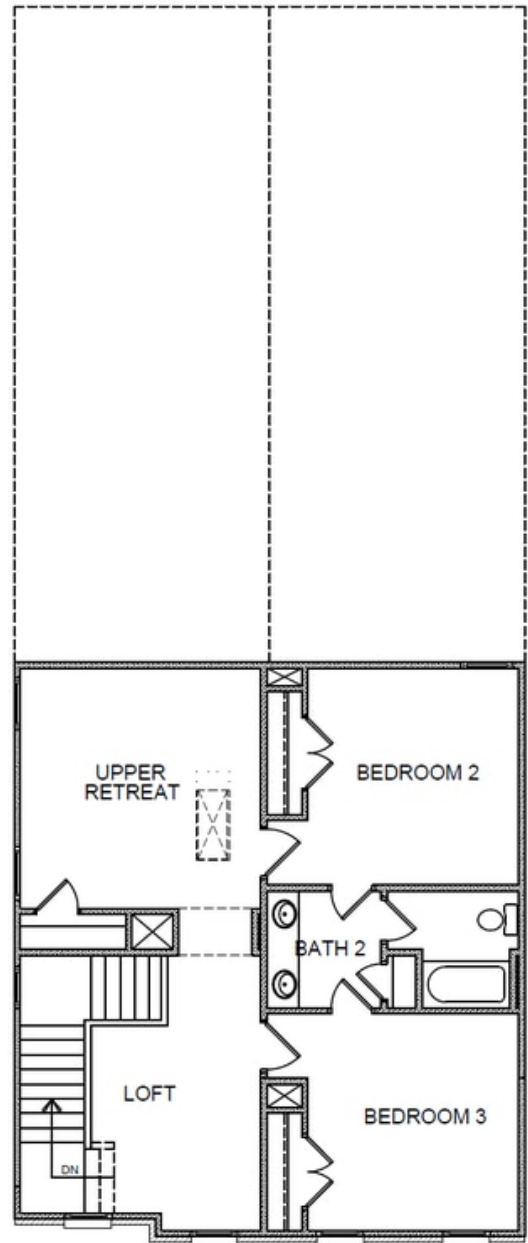
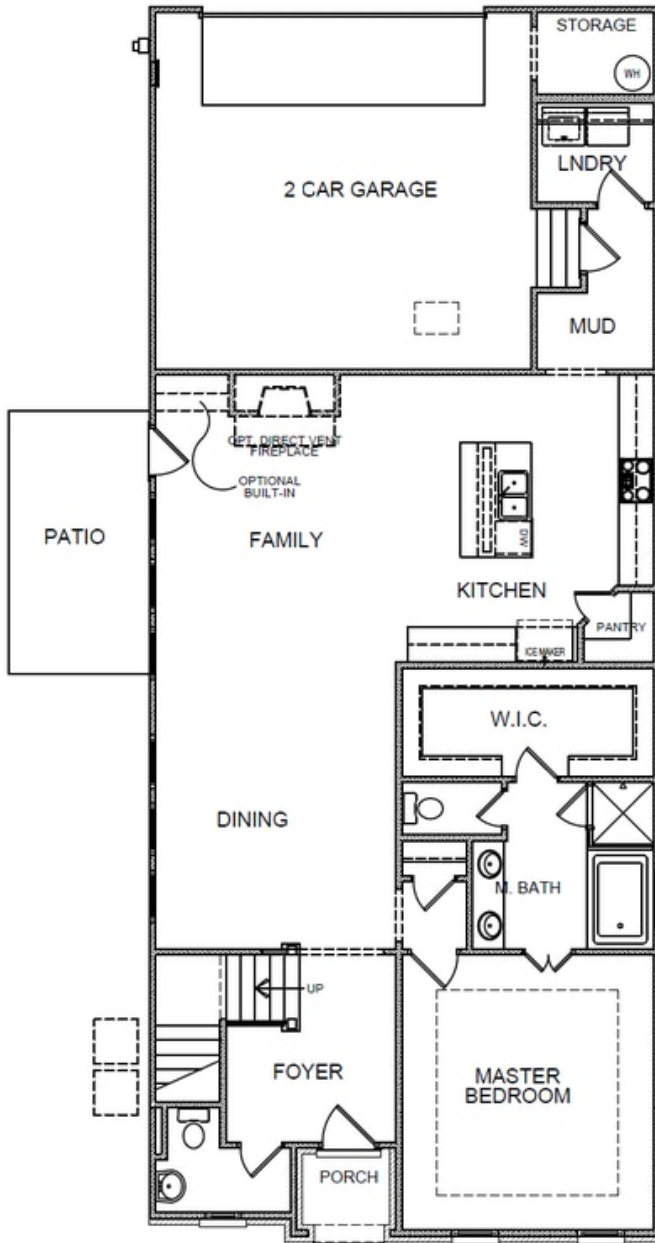
Elevation G



Elevation E



Elevation B



**Want to Know More  
 About This Home?**

CONTACT OUR NEW HOME NAVIGATOR  
 Call Us @ (470) 509-9931