

PRICED AT  
**\$449,900**

 1567 Sq Ft

 2 Beds

 2.0 Baths

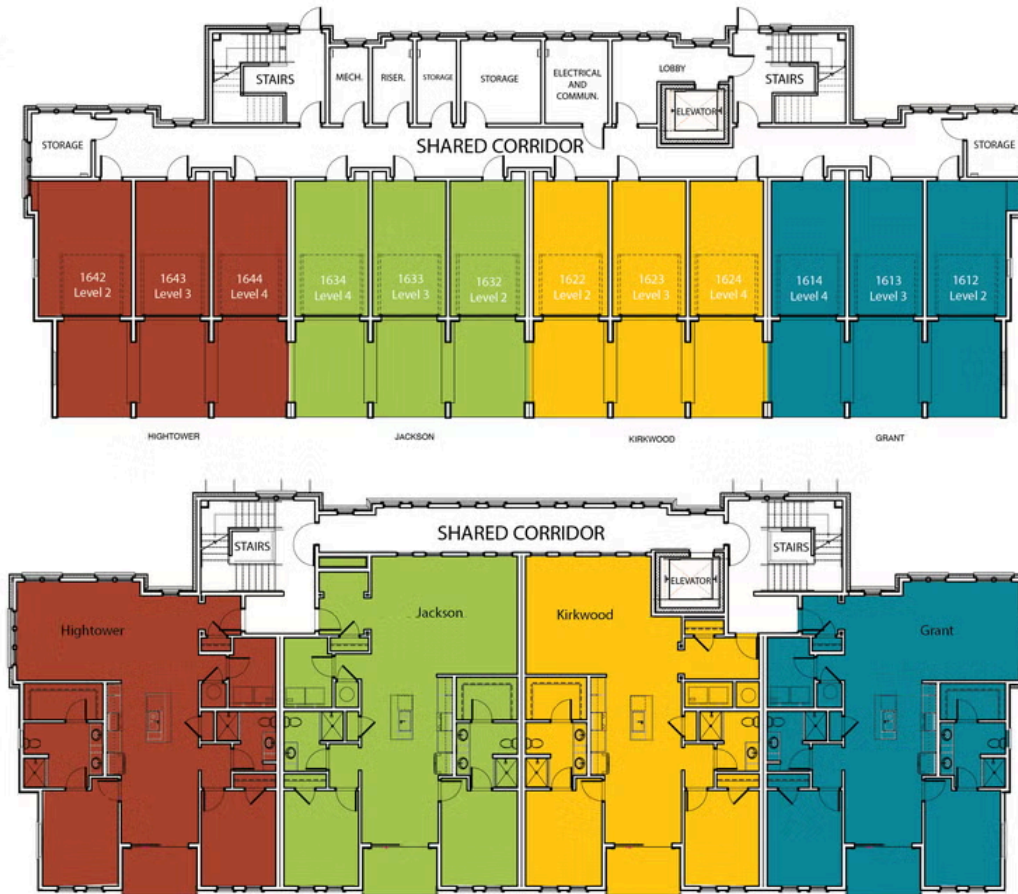
 1 Car Garage

 2.0 Story

New Year New Home New You! \*\*\*NOW FOR A LIMITED TIME ONLY!!!\*\*\* ~~~ Ask about our \$30K Anyway You Want It for qualified buyers for contracts written now through the end of February 2025. Park your car on the weekends and walk or bike the beltline right outside of your door! Grant Place is a BRAND-NEW boutique community that offers elevator service to your one level living home. Welcome to The Jackson Unit 2134, our largest floorplan located on the 4th floor of our newly released 2100 building. The open-concept layout seamlessly connects the living, dining, and kitchen areas, creating a sense of spaciousness and unity. Upon entry, you will be greeted by an expansive foyer with wood flooring that will lead you into your light filled home and a living area with plenty of wall space to display art or your large screen TV. Slide open your balcony door to enjoy quiet dining on the covered balcony. Step into one of the 2 bedrooms that sit apart from one another to give way for privacy. These spaces are all designed for you to entertain or relax after a long day. Each home offers a private one car garage, and ...

Want to Know More  
About This Home?

CONTACT OUR COMMUNITY SALES MANAGER



Want to Know More  
About This Home?

CONTACT OUR COMMUNITY SALES MANAGER



Want to Know More  
About This Home?

CONTACT OUR COMMUNITY SALES MANAGER



2ND FLOOR	UNIT 1632		1732		1832
3RD FLOOR	UNIT 1633		1733		1833
4TH FLOOR	UNIT 1634		1734		1834

Want to Know More  
About This Home?

CONTACT OUR COMMUNITY SALES MANAGER



2ND FLOOR	UNIT 1932	2032	2132
3RD FLOOR	UNIT 1933	2033	2133
4TH FLOOR	UNIT 1934	2034	2134

Want to Know More  
About This Home?

CONTACT OUR COMMUNITY SALES MANAGER