



PRICED AT
\$610,265

 2483 Sq Ft

 4 Beds

 3.0 Baths

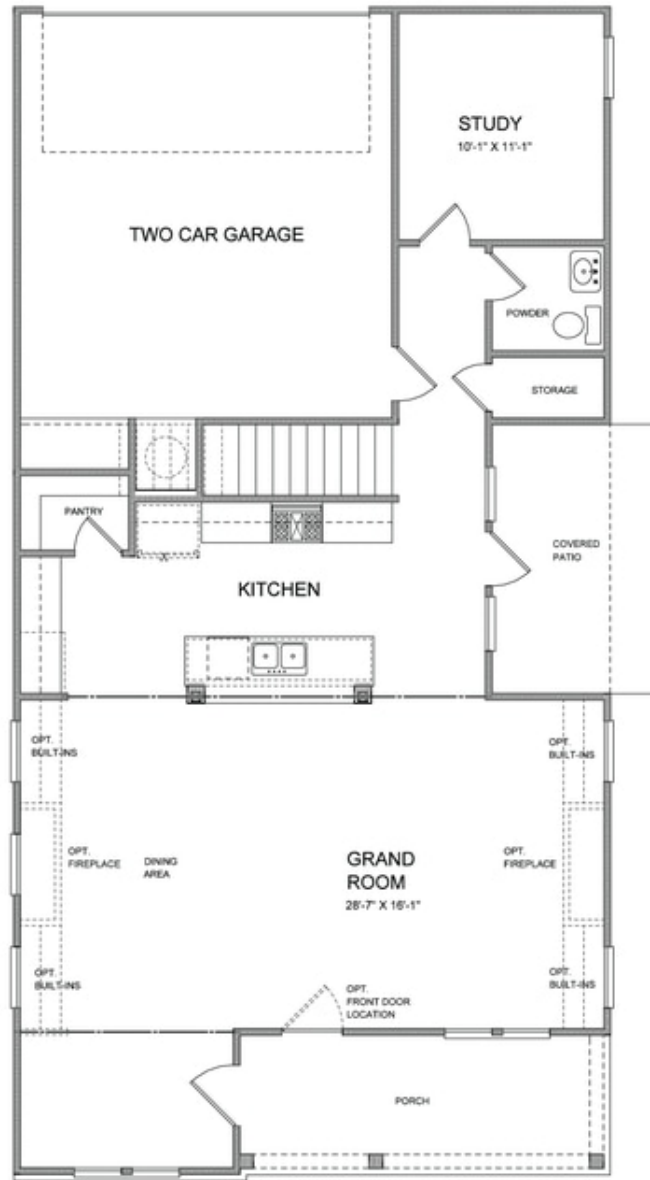
 2 Car Garage

 2.0 Story

Elevate your Life in 2023 with a new home by The Providence Group!! Come see what is new in Cumming, Georgia!! Super convenient to GA 400, restaurants, retail and local marinas are at your fingertips. Brackley is one of TPG's newest communities, featuring our stunning and spacious single-family homes and townhomes. The Owens is a well-appointed single-family home with 10-foot ceilings and 8 foot doors on the main floor of this open and spacious home. This Owens plan is under construction and will be ready for move in by November/December of 2023. Just in time for the holidays. This is a wonderful 4 bedroom/3 bathroom home. Guest suite on the main floor, perfect for guests or an office. Upstairs, you have a large Owners Suite, with stunning bathroom. His and her vanities. Laundry room conveniently located upstairs as well. Pictures are for representation purposes only and are not of actual home. Ask about our preferred lenders and our incentive of \$5000.00 towards Closing Costs.

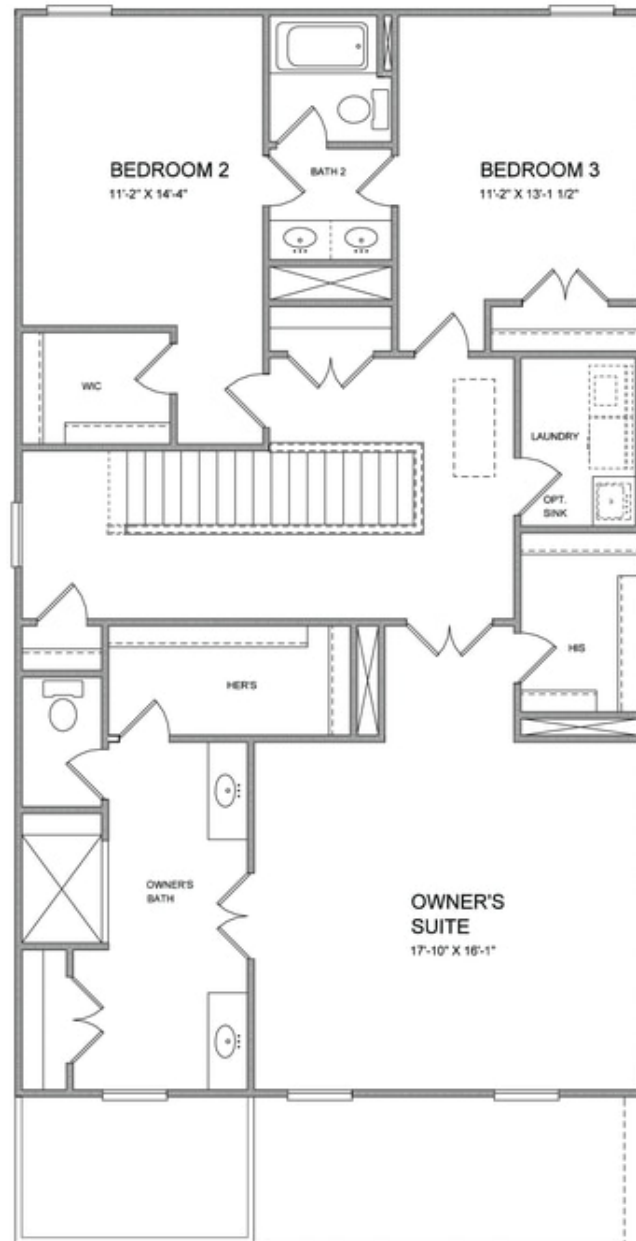
**Want to Know More
About This Home?**

CONTACT OUR COMMUNITY SALES MANAGER
Call Us @ 470.509.9930



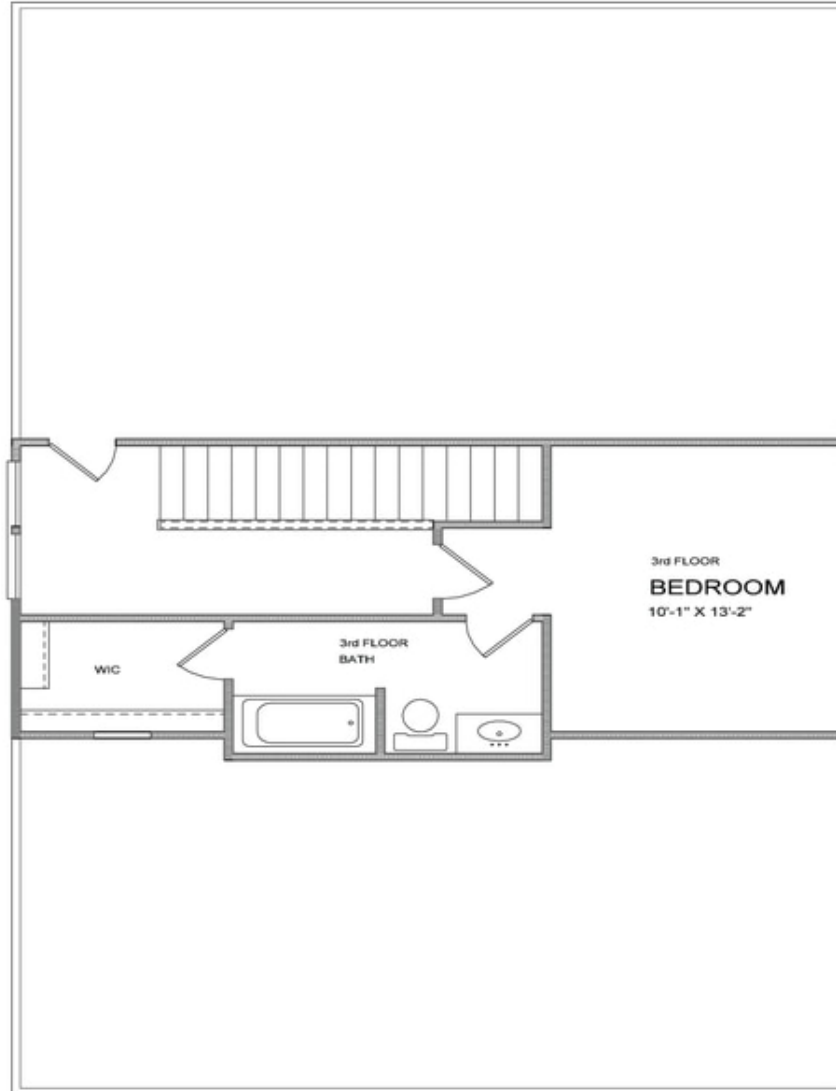
**Want to Know More
About This Home?**

CONTACT OUR COMMUNITY SALES MANAGER
Call Us @ 470.509.9930



**Want to Know More
About This Home?**

CONTACT OUR COMMUNITY SALES MANAGER
Call Us @ 470.509.9930



**Want to Know More
About This Home?**

CONTACT OUR COMMUNITY SALES MANAGER
Call Us @ 470.509.9930



OPTION
 WHEN EXTERIOR STORAGE SHED



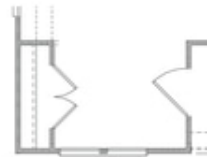
OPTION
 WHEN EXTERIOR STORAGE and
 INTERIOR CLOSET



OPTION
 WHEN BEDROOM 4 and BATH 3



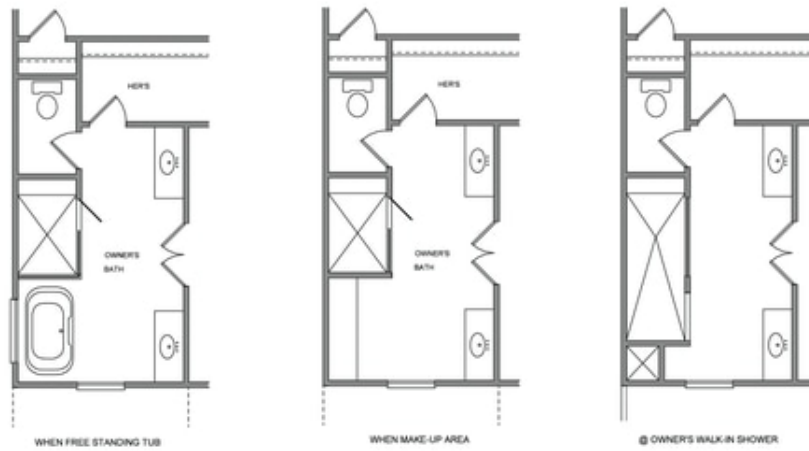
OPTION
 WHEN 9' SLIDING GLASS DOOR



OPTION
 WHEN COAT CLOSET

**Want to Know More
 About This Home?**

CONTACT OUR COMMUNITY SALES MANAGER
 Call Us @ 470.509.9930



**Want to Know More
About This Home?**

CONTACT OUR COMMUNITY SALES MANAGER
Call Us @ 470.509.9930