



PRICED AT
\$624,905

 2408 Sq Ft

 3 Beds

 2.5 Baths

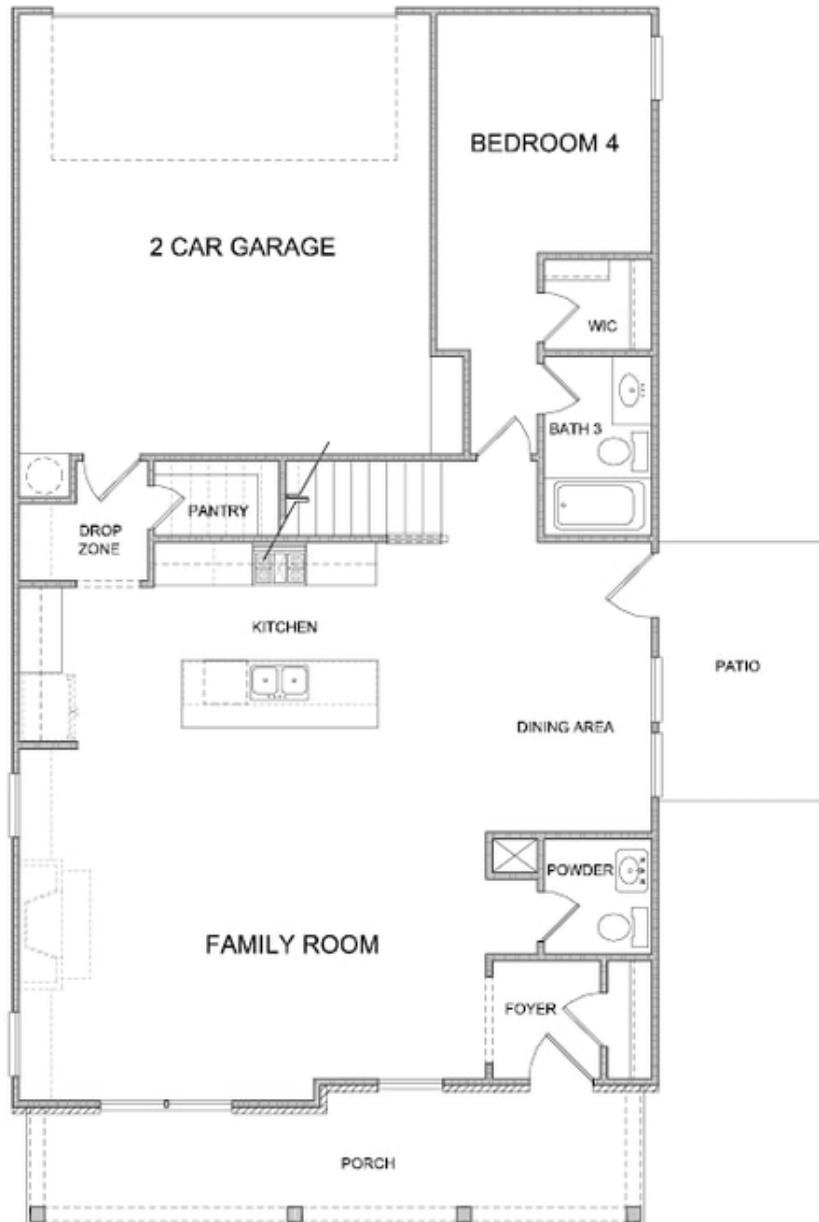
 2 Car Garage

 2.0 Story

New Year, New Home, New You!! **INVESTMENT, INVESTMENT, INVESTMENT.** This home is absolutely stunning and located in our newest TPG community, The Brackley, in Cumming, GA. The Osbourne is a single-family home set to be completed and ready for move-in! If you're looking for an investment opportunity, this is the first home we have released within these parameters, and you could have renters NOW and start 2024 on a great note!! If you are a home buyer, you could be in your new home by end of year, time for the holidays!! This home has a beautiful entry foyer and opens into a great family room, dining room and open gourmet kitchen. White perimeter cabinets with huge quartz countertops! Ample storage in your walk-in pantry. Gas range, vent hood, dishwasher and microwave and oven. The bedrooms upstairs are so large and every one of them has closet space. The primary suite boasts 2 massively huge closets! The primary bathroom will have double vanities, separate shower and tub..and plenty of large windows. If you need natural light, this home will not disappoint. The secondary bedrooms are spacious. Laundry room is conveniently located upstairs as well. There is a great loft area ...

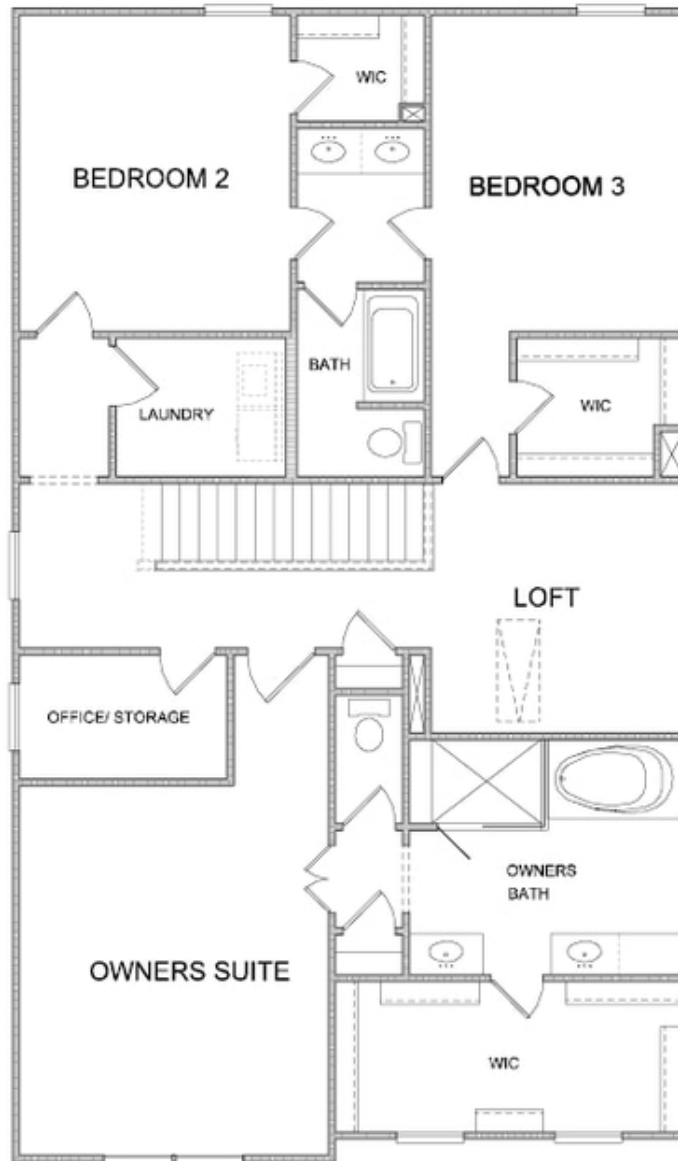
**Want to Know More
About This Home?**

CONTACT OUR COMMUNITY SALES MANAGER
Call Us @ 470.509.9930



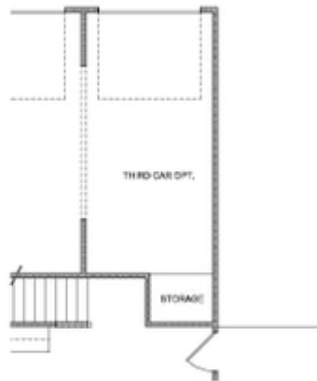
**Want to Know More
About This Home?**

CONTACT OUR COMMUNITY SALES MANAGER
Call Us @ 470.509.9930

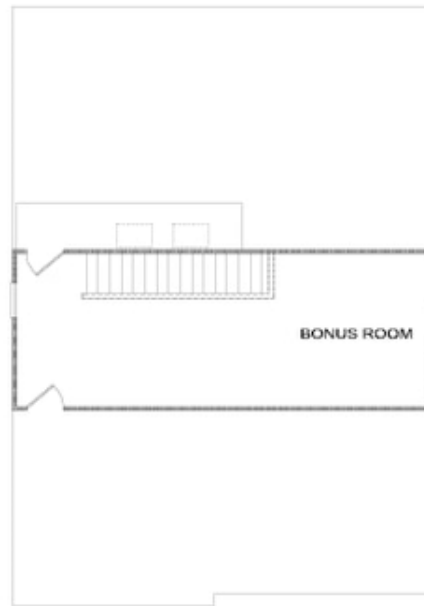


**Want to Know More
About This Home?**

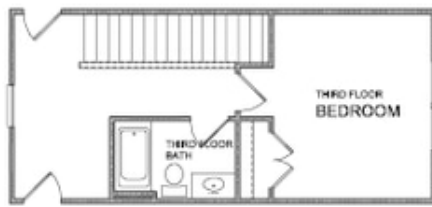
CONTACT OUR COMMUNITY SALES MANAGER
Call Us @ 470.509.9930



OPT Third Car Garage
flo Bedroom 4 & Bath 3



OPT 3rd Floor Bonus Room



OPT 3rd Floor w. Bedroom & Full Bath

OPTIONS

Want to Know More
About This Home?

CONTACT OUR COMMUNITY SALES MANAGER
Call Us @ 470.509.9930