



PRICED AT
\$674,860

 **2594 Sq Ft**

 **3 Beds**

 **2.5 Baths**

 **2 Car Garage**

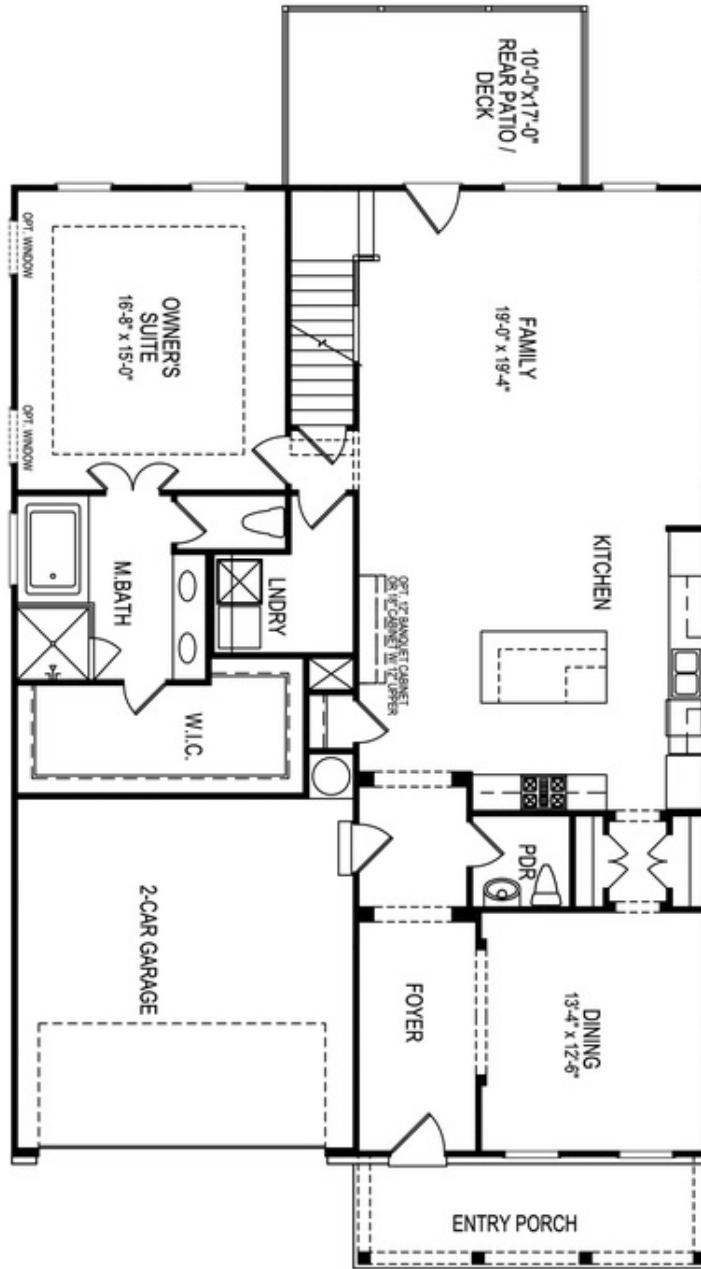
 **2.0 Story**

Elevate your life in 2023!! Our new community, the Brackley in Cumming is here! Brought to you by The Providence Group, local Atlanta based builders for over 22 years. We are backed by Green Brick who is a publicly traded company. There's a great chance you've seen our communities in Johns Creek, Alpharetta, Suwanee, near the Belt Line, in Peachtree Corners and more! Come see what makes these beautiful homes stand out from other communities. Well laid out floorplans, accessibility to GA 400, restaurants, retail, Lake Lanier are just some of the reasons we are growing so fast. The Madilyn is a sought out home with Primary suite located on the main floor!! 10 foot ceilings on the main floor with extended doors and tons of windows make this home seem super bright and airy. The primary suite has a large owners closet, the bathroom will host double vanities with a separate tub and shower. The laundry room is also located on the main floor for convenience. The gourmet kitchen is open to the family room, which makes gatherings quite easy! There are 2 more bedrooms and a loft area in the ample spaced upstairs. The pictures shown are not

...

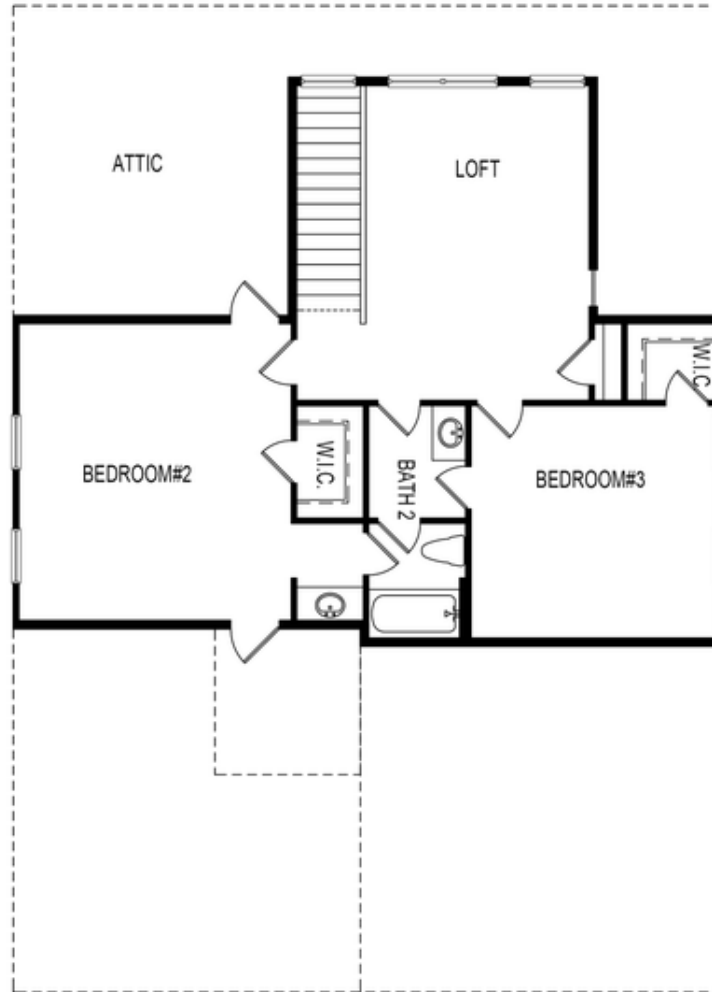
**Want to Know More
About This Home?**

CONTACT OUR COMMUNITY SALES MANAGER
Call Us @ 470.509.9930



Want to Know More
 About This Home?

CONTACT OUR COMMUNITY SALES MANAGER
 Call Us @ 470.509.9930

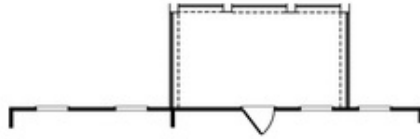


Second Floor

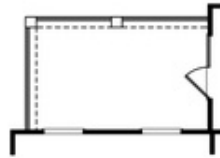
Want to Know More
About This Home?

CONTACT OUR COMMUNITY SALES MANAGER
Call Us @ 470.509.9930

Options



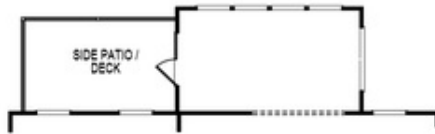
OPT Covered Patio/Deck



OPT Covered Side Patio/Deck



OPT Fireplace
 w. Opt Built-Ins



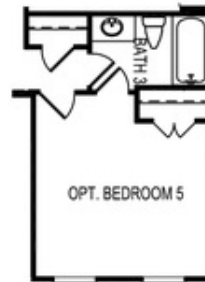
OPT Sunroom



OPT Butler's Pantry



OPT Bedroom 4 ilo Loft



OPT Bedroom 5
 ilo Dining Room



OPT Owner's
 Walk-In Shower

Want to Know More
 About This Home?

CONTACT OUR COMMUNITY SALES MANAGER
 Call Us @ 470.509.9930