



PRICED AT
\$656,900

 2483 Sq Ft

 4 Beds

 3.0 Baths

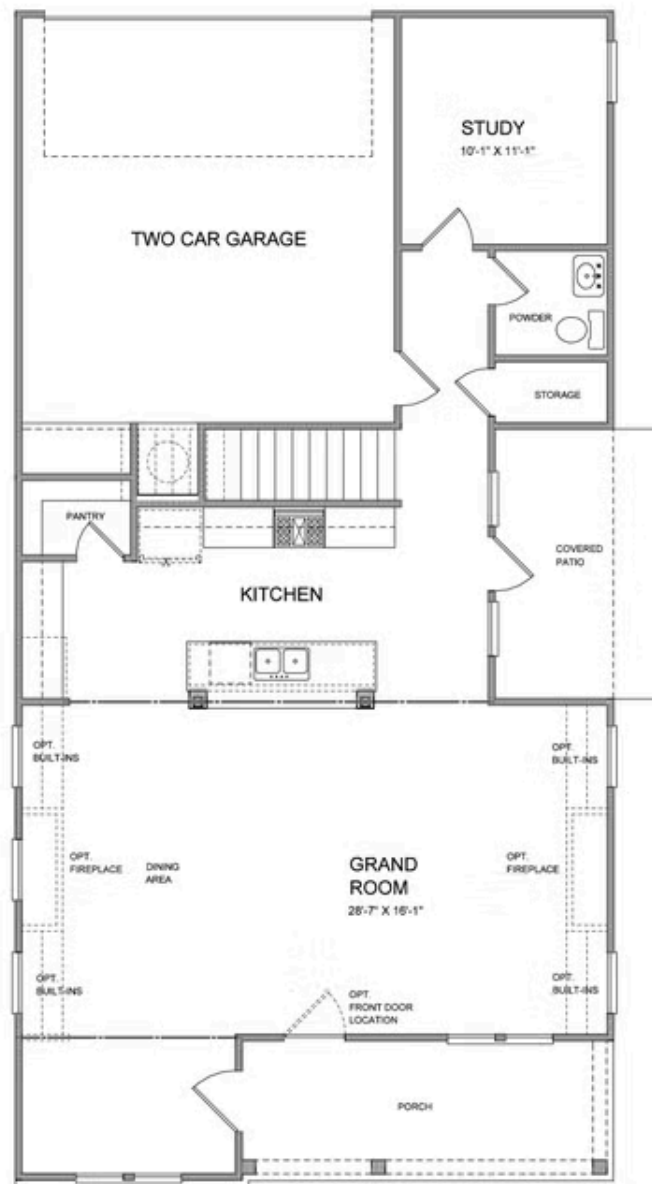
 2 Car Garage

 2.0 Story

Spring into a New Home!!QUICK MOVE-IN!!!! The Owens, one of our favorite floorplans, is a well-appointed single-family home with 10-foot ceilings and 8-foot doors on the main floor of this open and spacious home. From the moment you enter this home from the covered entrance...you are going to love this home! The foyer opens to a bright and welcoming kitchen and family room space. An abundance of cabinets and the pantry will make storage a non-issue. You will instantly notice the amount of natural light that pours into these rooms...and, you have an awesome slider door that opens onto your private courtyard, adding to the indoor-outdoor that we love here in Georgia. On the main floor you will find an office/guest bedroom with a full bath. When you go upstairs, you will find a very spacious primary bedroom with double vanities and a huge glass enclosed frameless shower, plus, a standalone tub perfect for soaking. Perfect space for getting ready each day. Two secondary bedrooms with jack and jill bathroom. Laundry room conveniently located upstairs as well. Come see what is new in Cumming, Georgia!! Brackley is one of TPG's newest communities, featuring our stunning and spacious single-family homes and ...

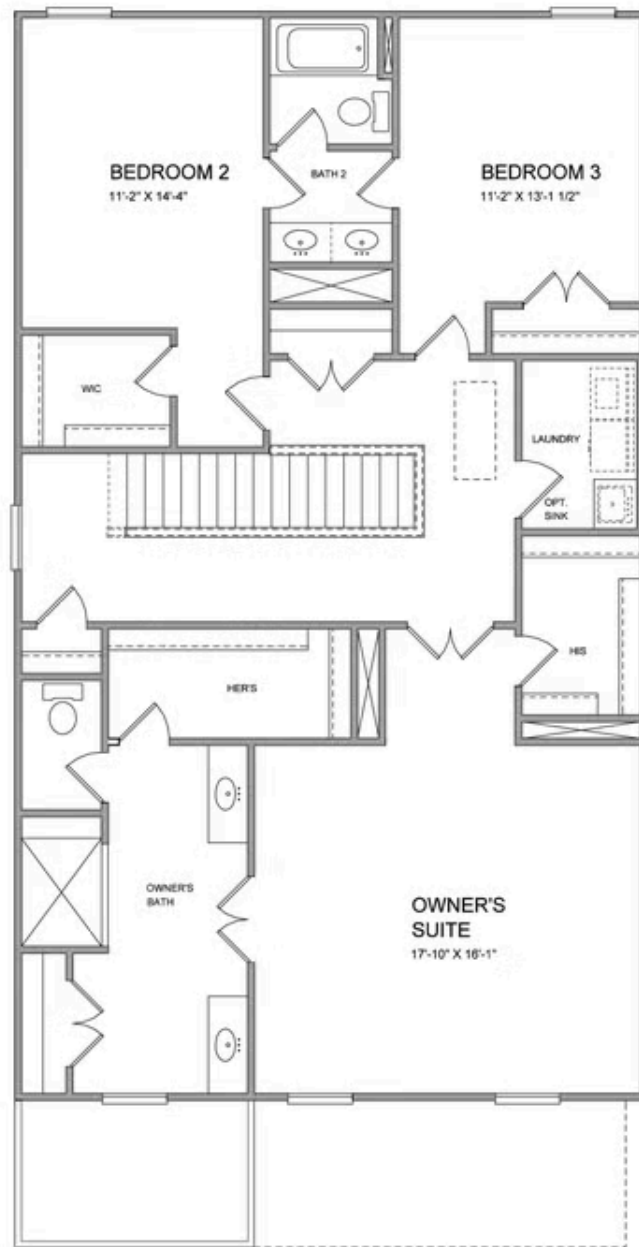
**Want to Know More
About This Home?**

CONTACT OUR COMMUNITY SALES MANAGER
Call Us @ 470.509.9930



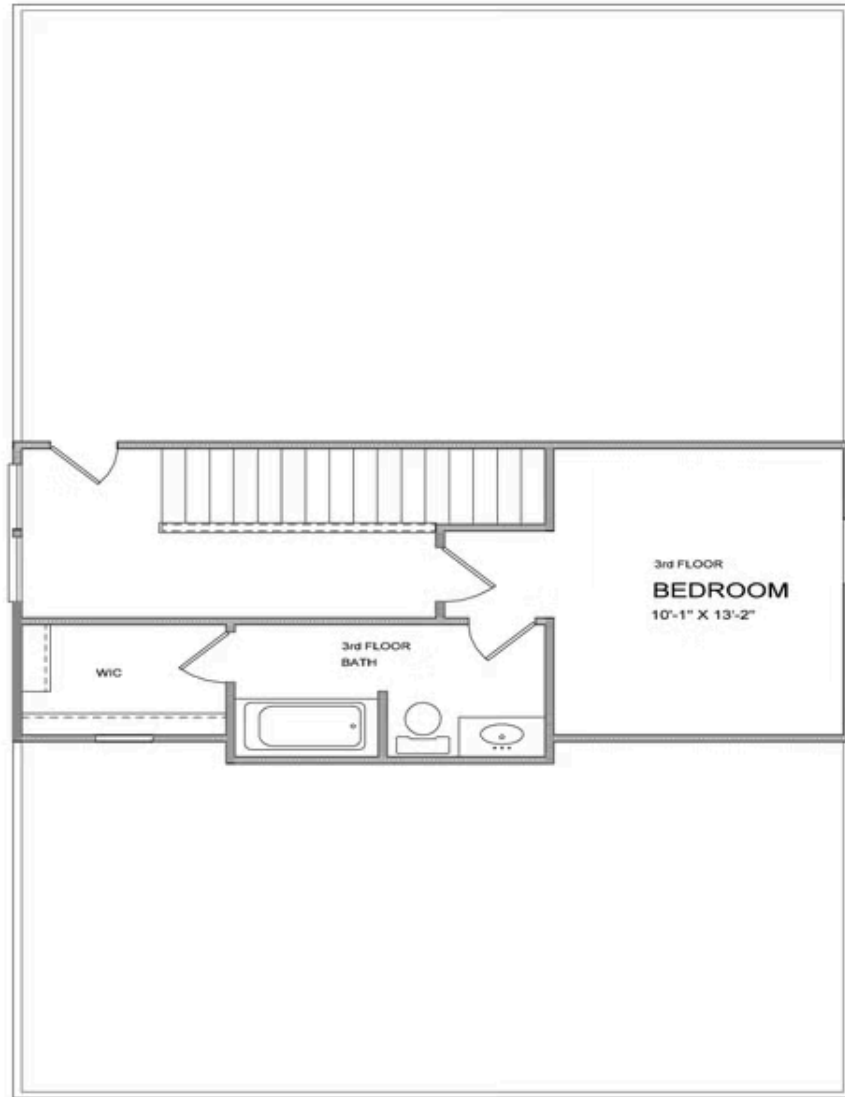
Want to Know More
About This Home?

CONTACT OUR COMMUNITY SALES MANAGER
Call Us @ 470.509.9930



**Want to Know More
About This Home?**

CONTACT OUR COMMUNITY SALES MANAGER
Call Us @ 470.509.9930



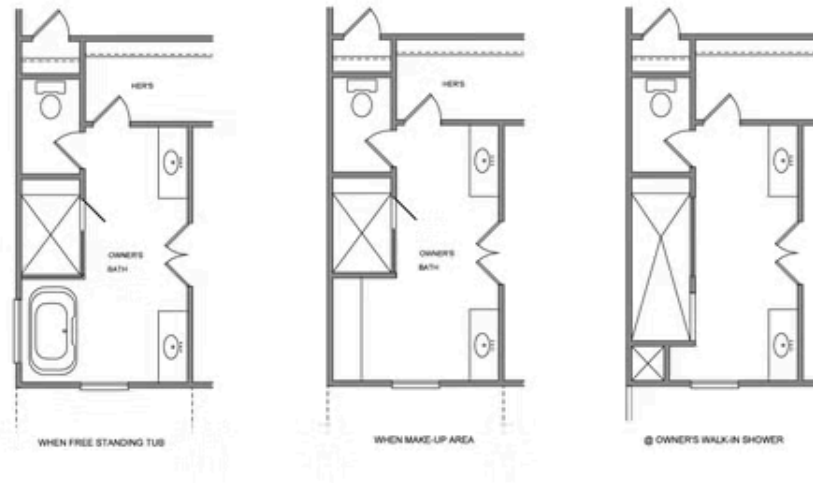
Want to Know More
About This Home?

CONTACT OUR COMMUNITY SALES MANAGER
Call Us @ 470.509.9930



Want to Know More
About This Home?

CONTACT OUR COMMUNITY SALES MANAGER
Call Us @ 470.509.9930



Want to Know More
About This Home?

CONTACT OUR COMMUNITY SALES MANAGER
Call Us @ 470.509.9930