



PRICED AT
\$665,635

 2532 Sq Ft

 5 Beds

 4.0 Baths

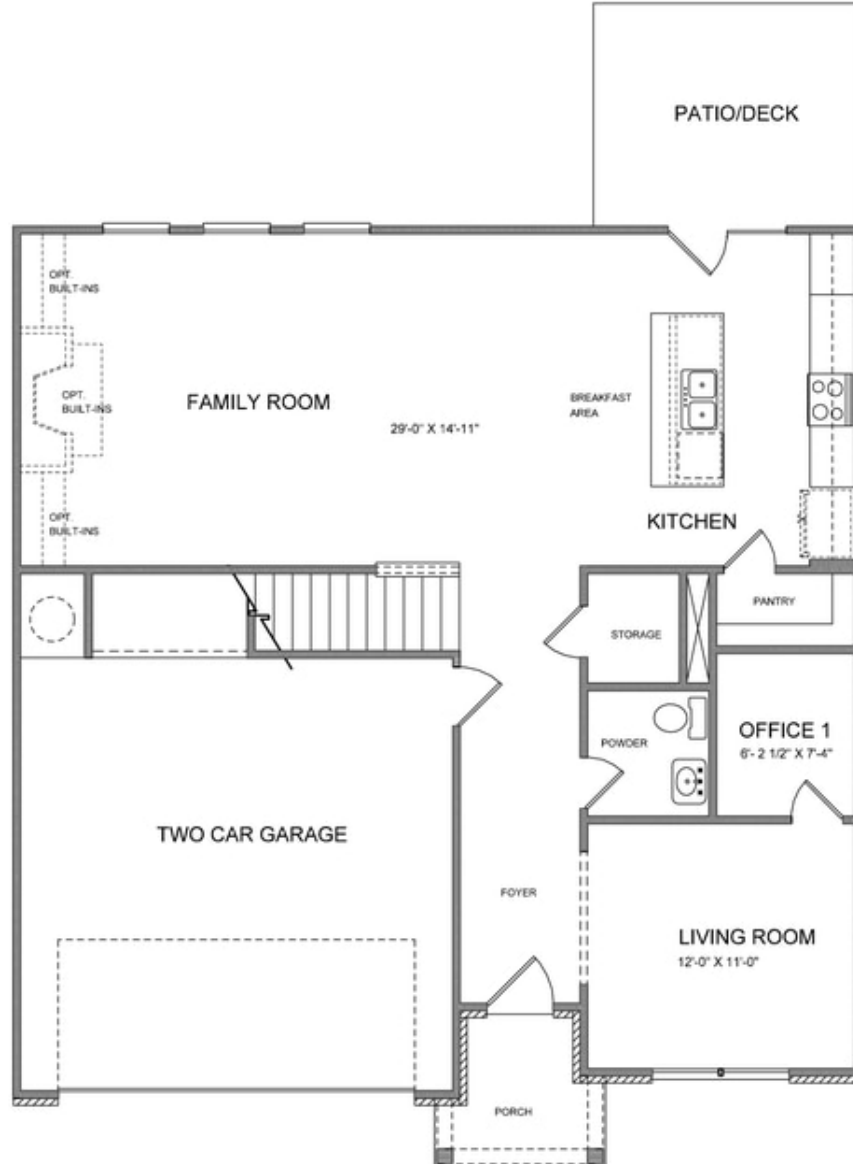
 2 Car Garage

 2.0 Story

Elevate your lifestyle in 2023!!! This amazing home is located in Cumming, GA inside of TPG's newest communities, The Brackley. This home design is called the Wesley. A stunning home from the outside and gorgeous on the inside. This beautiful home features 5 bedrooms and 4.5 bathrooms. Space for everyone! From the outside porch, you will enter into the foyer..a guest suite with full bathroom is on the main floor for easy access for your guests. The open floorplan is conducive to today's busy lifestyle. A large kitchen with a huge island has an open concept feel and sightline into the family room. Quartz countertops, GE appliances, under counter lighting and soft touch doors and drawers make this kitchen a showstopper. The stairway from main floor to the upstairs is tucked away nicely. The primary bedroom upstairs is oversized and will feel like a retreat after a busy day. The primary bathroom with double vanities, a huge walk-in closet also has a separate tub and glass enclosed shower. Hardwood floors throughout the home. This Wesley plan is a front entrance home providing a backyard to entertain in! The Brackley community is so convenient to GA 400, the Cumming City Center; ...

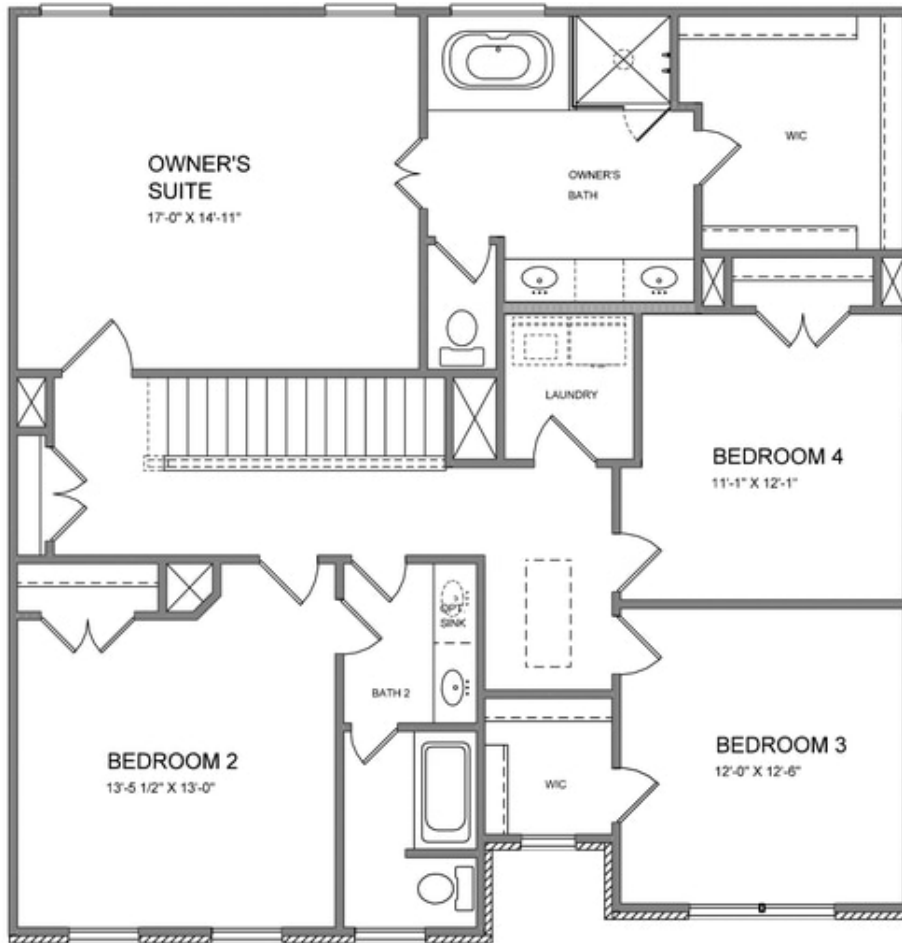
**Want to Know More
About This Home?**

CONTACT OUR COMMUNITY SALES MANAGER
Call Us @ 470.509.9930



**Want to Know More
About This Home?**

CONTACT OUR COMMUNITY SALES MANAGER
Call Us @ 470.509.9930



**Want to Know More
About This Home?**

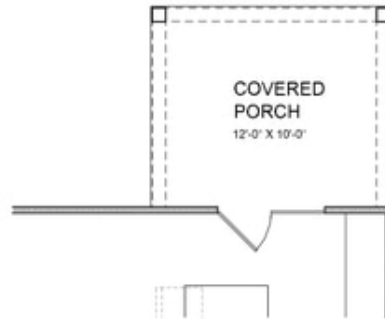
CONTACT OUR COMMUNITY SALES MANAGER
Call Us @ 470.509.9930



Opt. Guest Retreat



Opt. Sunroom



Opt. Covered Porch

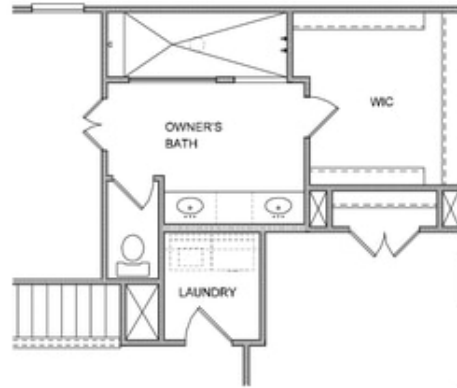
**Want to Know More
About This Home?**

CONTACT OUR COMMUNITY SALES MANAGER
Call Us @ 470.509.9930

2nd Floor Options



OPT OFFICE 2



OPT WALK-IN SHOWER



OPT BATH 3
* Elevation B ONLY

Want to Know More
About This Home?

CONTACT OUR COMMUNITY SALES MANAGER
Call Us @ 470.509.9930