



PRICED AT
\$703,995

 **2732 Sq Ft**

 **5 Beds**

 **3.0 Baths**

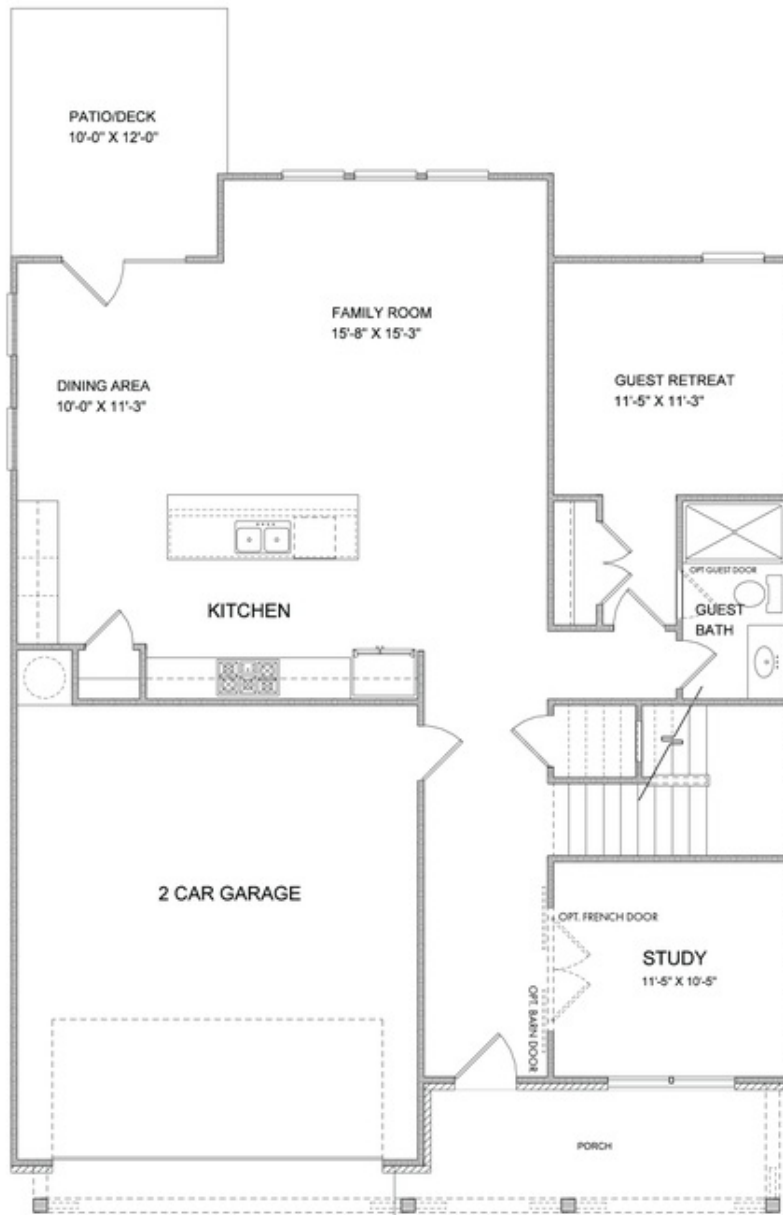
 **2 Car Garage**

 **2.0 Story**

"New Year, New Home, New You!!". Come see our newest and anticipated community, Brackley! We are located in the City of Cumming, GA, just one mile from GA400 and just around the corner from the City Center! Brackley is a beautiful community convenient to shopping, retail, restaurants, the City Center, Fairgrounds and so much more! Enjoy Lake Lanier, it's just a couple miles away on Buford Dam Road. The Bennett is part of our Carriage collection and is one of our largest floor plans. When you walk into the front door you are great with a foyer that opens up to an open area that consists of your gourmet kitchen, dining area and family room that is great for indoor entertaining. You have access to your outdoor entertainment area from the dining room. You will have views of the backyard from every room. This home also has a guest retreat and a separate office, so you can work in privacy on the main level. The second story has 4 bedrooms, 2 bathrooms with a loft along with your laundry room. This home has it all and you still have time to add your own touch when you go to the ...

**Want to Know More
About This Home?**

**CONTACT OUR COMMUNITY SALES MANAGER
Call Us @ 470.509.9930**



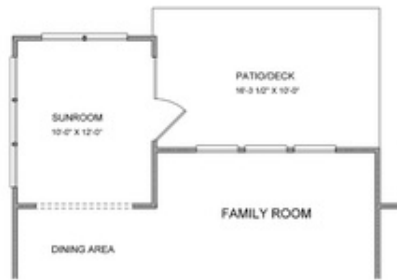
Want to Know More
About This Home?

CONTACT OUR COMMUNITY SALES MANAGER
Call Us @ 470.509.9930

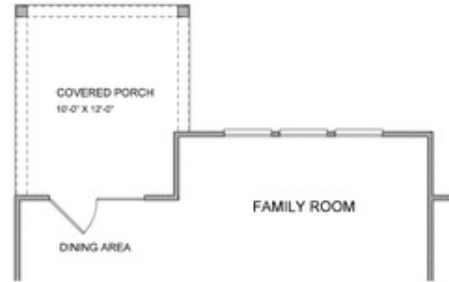


Want to Know More
About This Home?

CONTACT OUR COMMUNITY SALES MANAGER
Call Us @ 470.509.9930



Opt. Sunroom



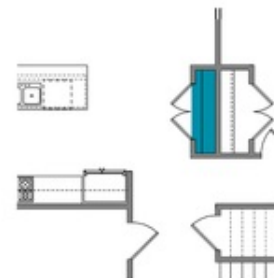
Opt. Covered Porch



Opt. Fireplace



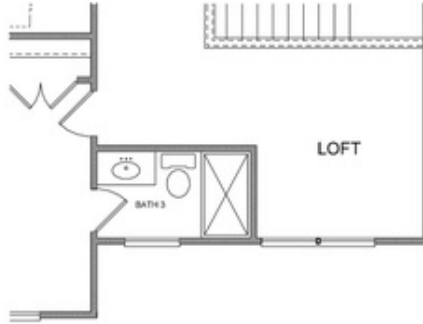
Opt. Rear Fireplace



Opt. Pantry

Want to Know More
About This Home?

CONTACT OUR COMMUNITY SALES MANAGER
Call Us @ 470.509.9930



Opt. 3rd Bath



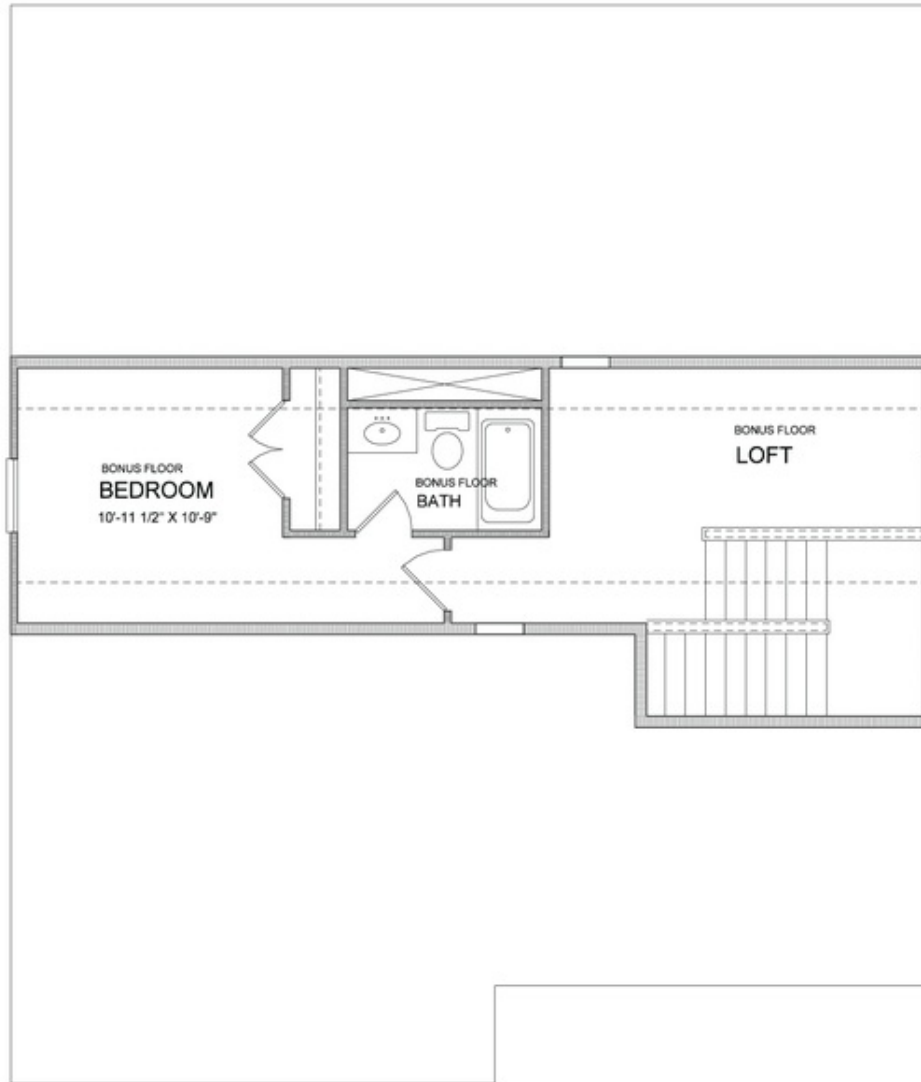
Opt. Owner's Sitting Room



Opt. Owner's Walk-in Shower

Want to Know More
About This Home?

CONTACT OUR COMMUNITY SALES MANAGER
Call Us @ 470.509.9930



Want to Know More
About This Home?

CONTACT OUR COMMUNITY SALES MANAGER
Call Us @ 470.509.9930