



PRICED AT
\$632,115

 2983 Sq Ft

 5 Beds

 4.5 Baths

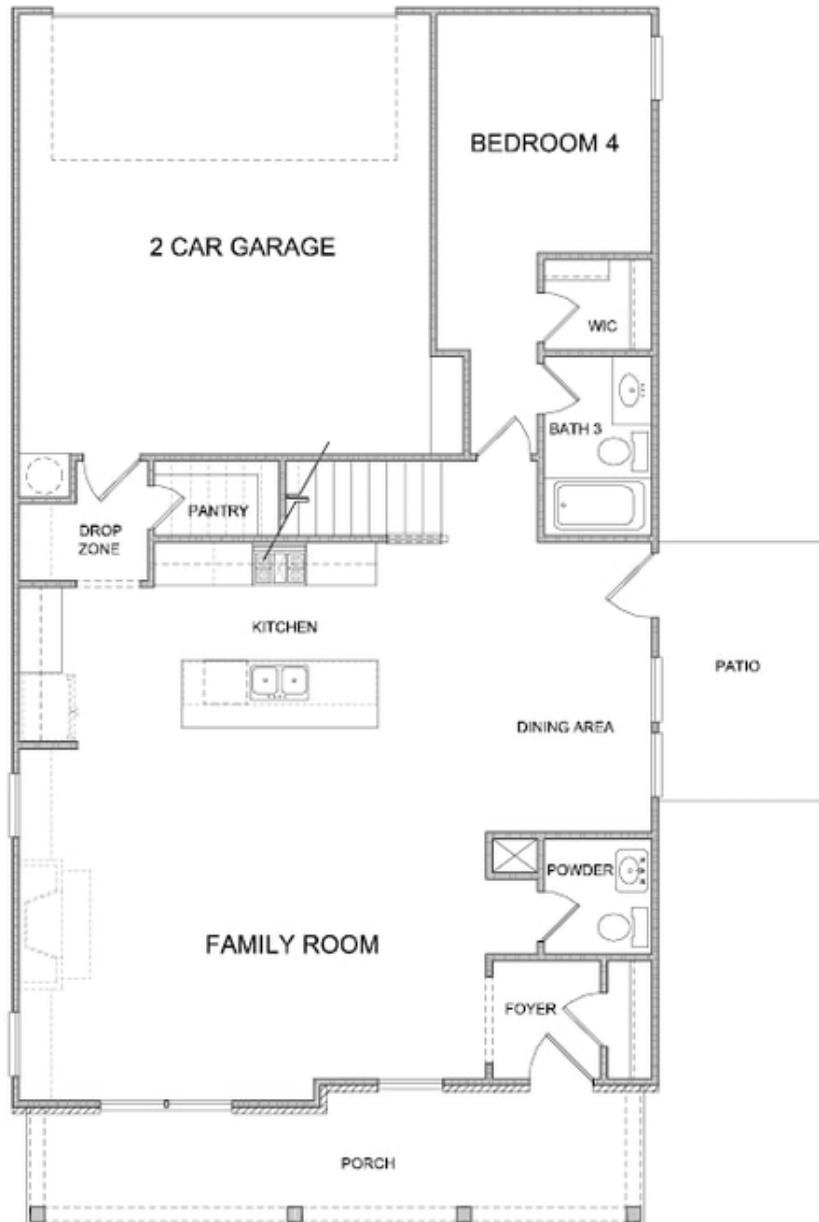
 2 Car Garage

 2.0 Story

Spring into a New Home! This home is absolutely stunning and located in our newest TPG community, The Brackley, in Cumming, GA. The Osbourne is a single-family home set to be completed September/October! This home has a beautiful entry foyer and opens into a great family room, dining room and open gourmet kitchen. Mineral colored cabinets with huge quartz countertops! Ample storage in your walk-in pantry. Gas range, vent hood, dishwasher and microwave and oven. The bedrooms upstairs are so large and every one of them has closet space. There is a great office/storage area on the second level. The primary bathroom will have double vanities, separate shower and tub, and plenty of large windows. If you need natural light, this home will not disappoint. The secondary bedrooms are spacious. Laundry room is conveniently located upstairs as well. There is a great loft area in the upstairs area perfect for a second lounging area, reading nook, home office, etc. The sidewalks throughout the community will take you to the pool just up the street. There's a fabulous doggie park to enjoy. You are located just one mile from GA 400, minutes from Lake Lanier, from the City Center, retail shops, ...

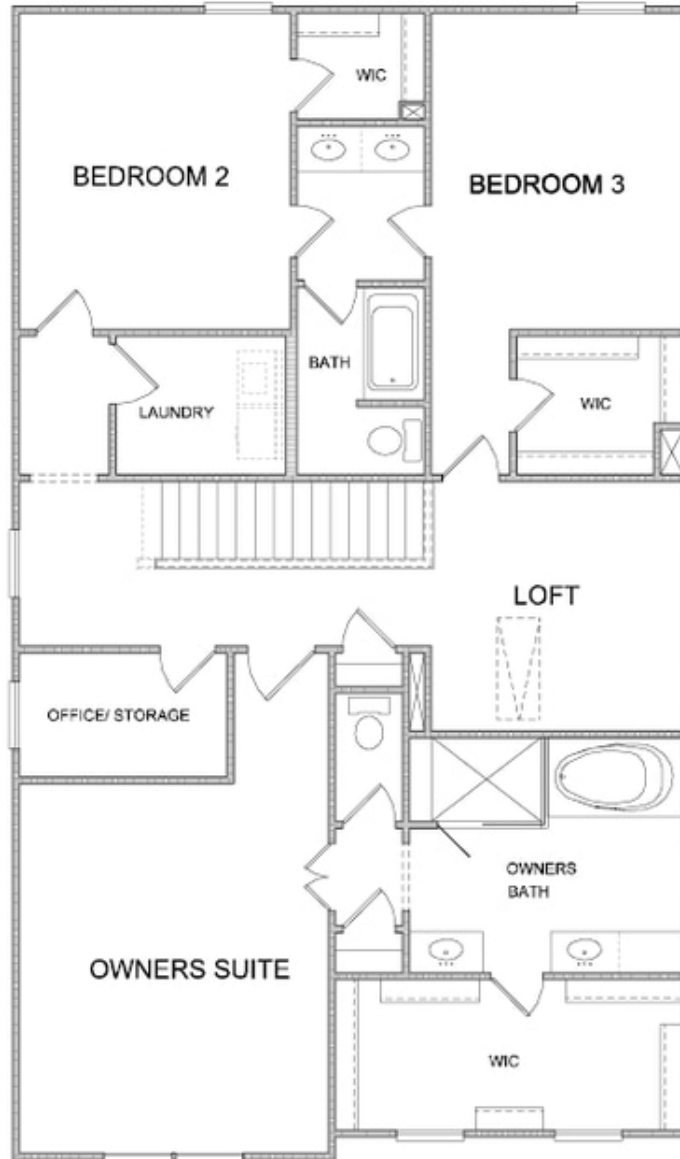
**Want to Know More
About This Home?**

CONTACT OUR COMMUNITY SALES MANAGER
Call Us @ 470.509.9930



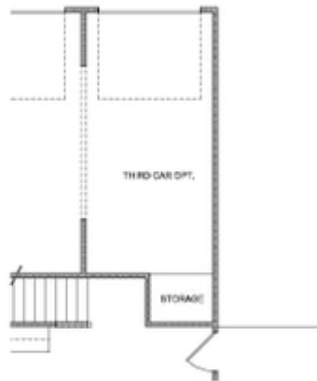
**Want to Know More
About This Home?**

CONTACT OUR COMMUNITY SALES MANAGER
Call Us @ 470.509.9930

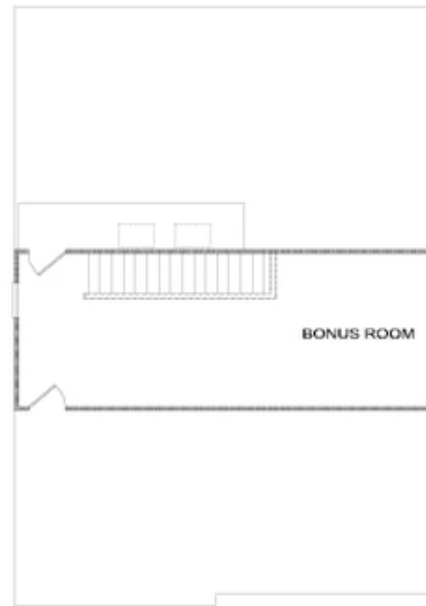


**Want to Know More
About This Home?**

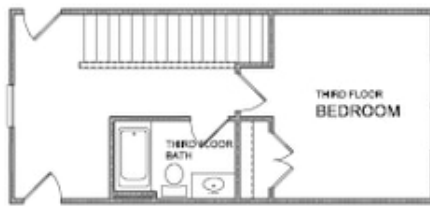
CONTACT OUR COMMUNITY SALES MANAGER
Call Us @ 470.509.9930



OPT Third Car Garage
w/ Bedroom 4 & Bath 3



OPT 3rd Floor Bonus Room



OPT 3rd Floor w. Bedroom & Full Bath

OPTIONS

**Want to Know More
About This Home?**

CONTACT OUR COMMUNITY SALES MANAGER
Call Us @ 470.509.9930