



PRICED AT  
**\$624,255**

 2676 Sq Ft

 4 Beds

 3.5 Baths

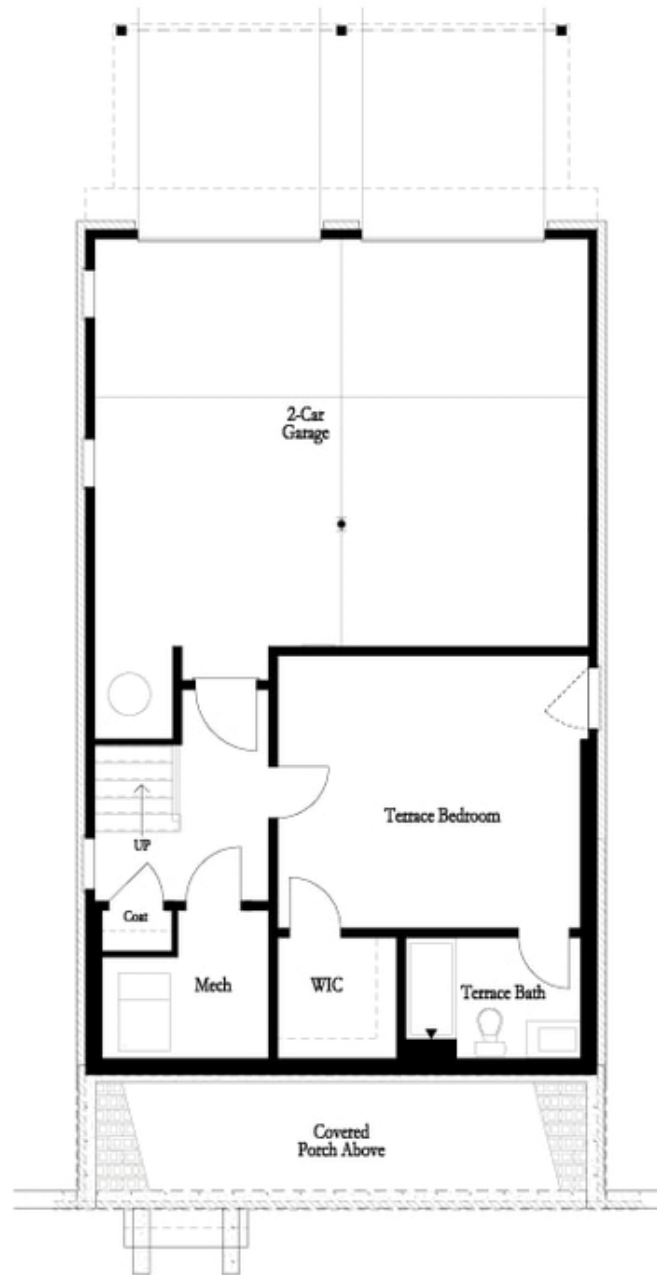
 2 Car Garage

 3.0 Story

Elevate your life in 2023 with a new home by The Providence Group. Atlanta based builder building quality homes for over 22 years! The Brackley is a beautiful Providence Group community convenient to shopping, retail, restaurants, Lake Lanier and so much more! The Greenville, is one of our newest floorplans, sure to please buyers with its spacious and open layout. This is a 4-bedroom 3.5-bathroom home with over 2700 square feet. A bedroom with full bath will be located on the Terrace level perfect for teens or visiting guests. Upstairs, you will find open concept living at its finest: 10-foot ceilings with 8-foot interior doors on main floor. Enter the foyer and you will see a home built for today's living, open and well thought out. Your kitchen with white cabinets, huge island for plenty of informal dining is located in the front of the home. The dining room and family room both have great sight lines through the rest of the main floor. Gorgeous fireplace with floor to ceiling fireplace surround, to warm up the cool Georgia evenings. There is a large deck perfect for entertaining or just relaxing after a long day. Our HOA maintains all the lawns, ...

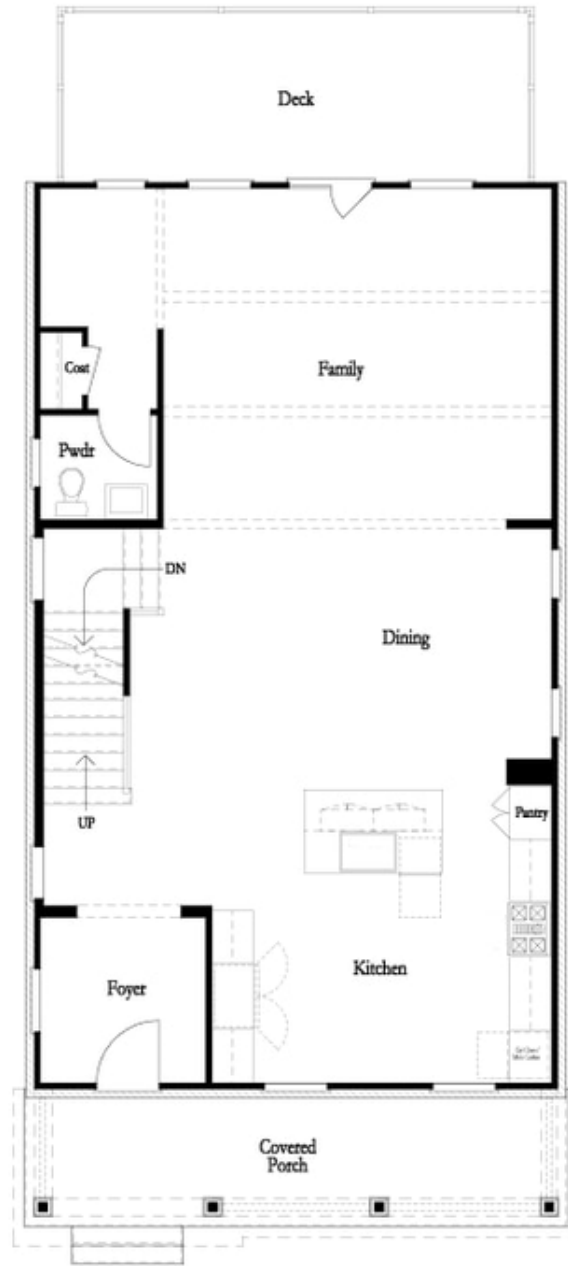
**Want to Know More  
About This Home?**

CONTACT OUR COMMUNITY SALES MANAGER  
Call Us @ 470.509.9930



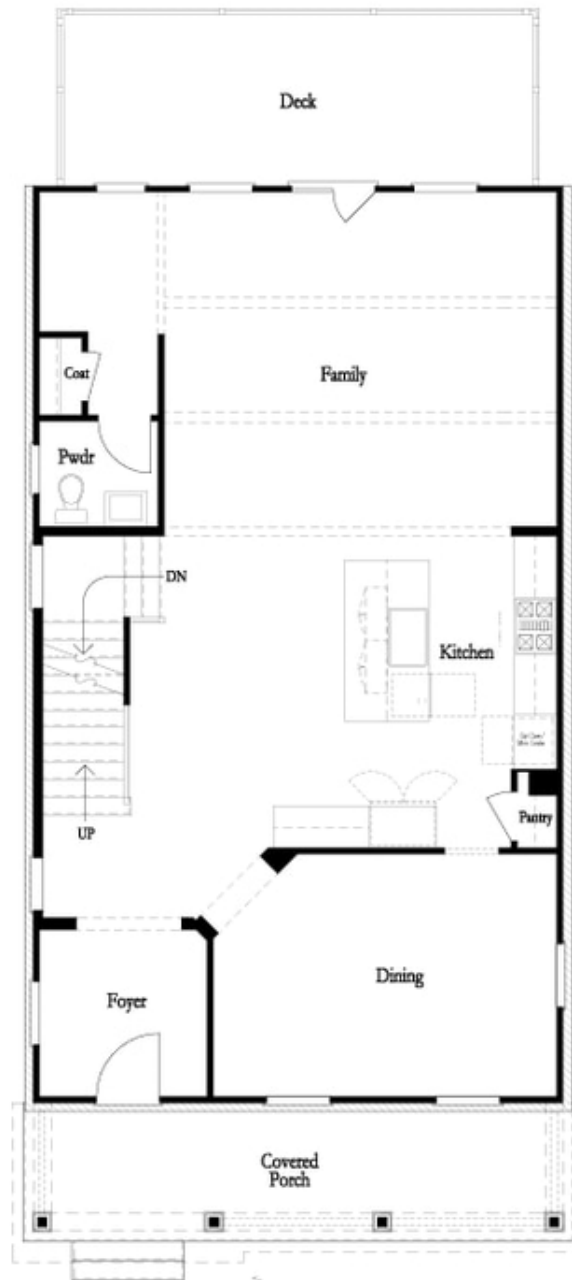
**Want to Know More  
About This Home?**

CONTACT OUR COMMUNITY SALES MANAGER  
Call Us @ 470.509.9930



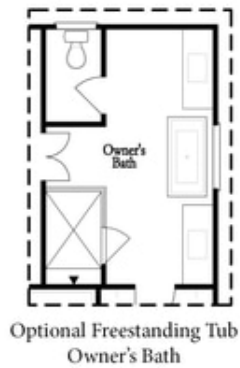
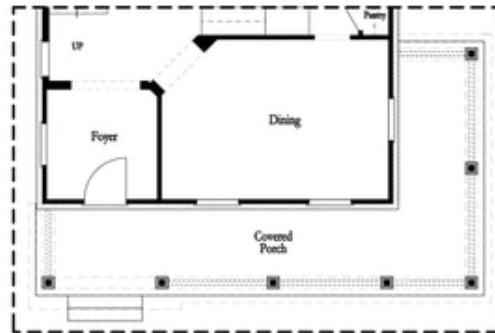
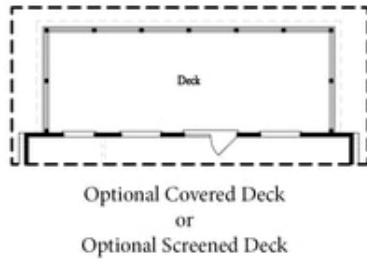
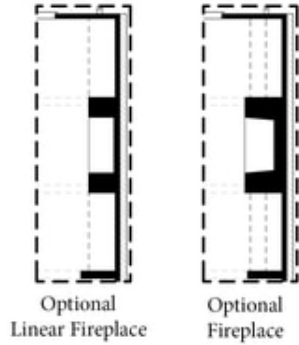
**Want to Know More  
About This Home?**

CONTACT OUR COMMUNITY SALES MANAGER  
Call Us @ 470.509.9930



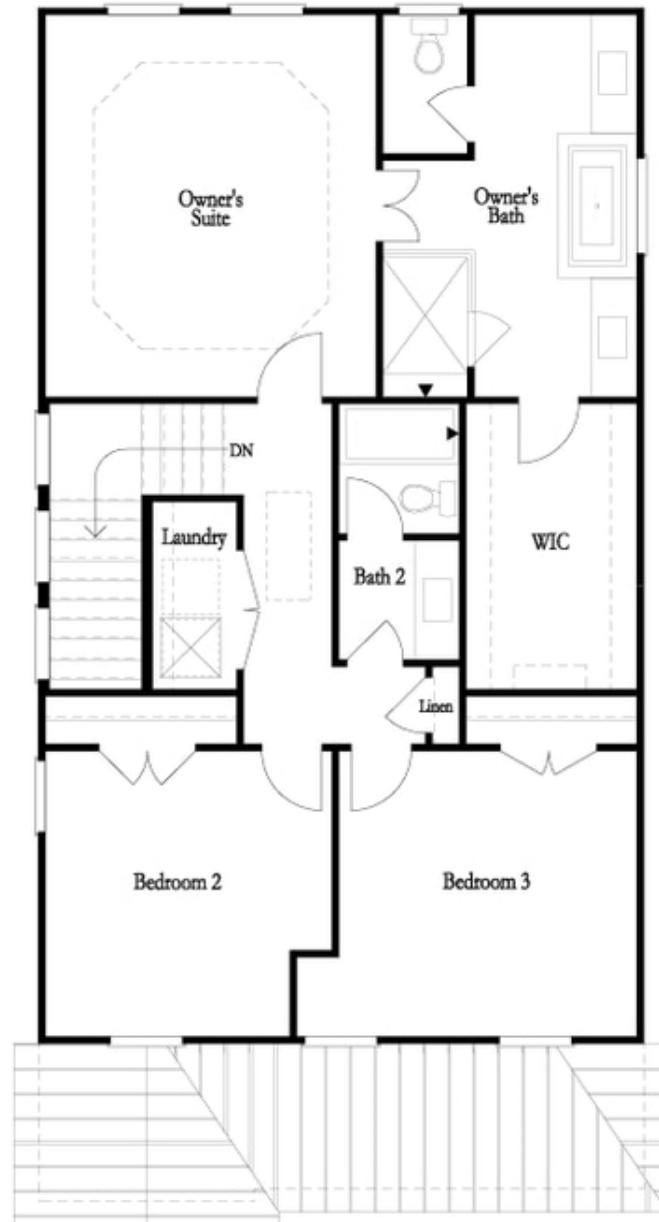
**Want to Know More  
About This Home?**

CONTACT OUR COMMUNITY SALES MANAGER  
Call Us @ 470.509.9930



**Want to Know More  
 About This Home?**

CONTACT OUR COMMUNITY SALES MANAGER  
 Call Us @ 470.509.9930



**Want to Know More  
About This Home?**

CONTACT OUR COMMUNITY SALES MANAGER  
Call Us @ 470.509.9930