



PRICED AT
\$625,350

 **2573 Sq Ft**

 **4 Beds**

 **3.5 Baths**

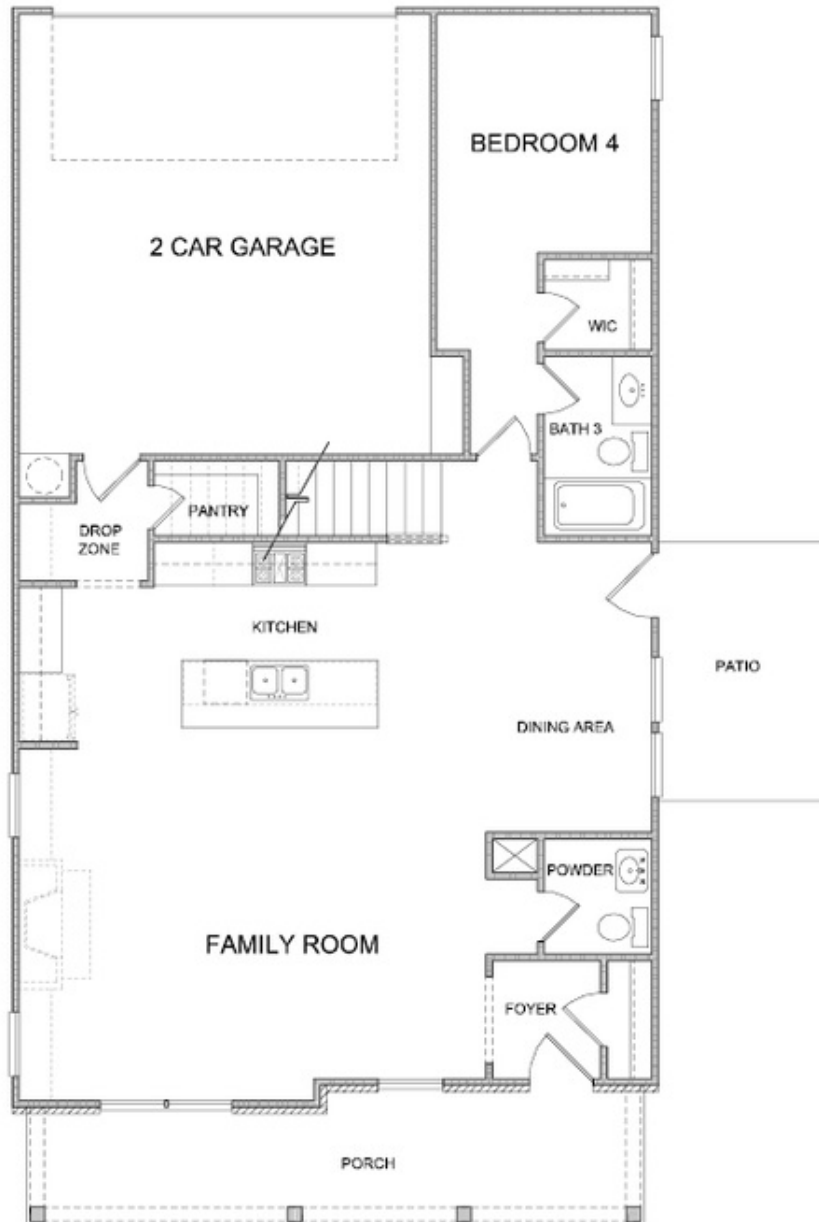
 **2 Car Garage**

 **2.0 Story**

Fall into Savings! Pick your interior design options for a limited time! This home is North facing and located in our newest TPG community, The Brackley, in Cumming, GA. The Osbourne is a single-family home set to be completed April/May 2025! One of our most popular floorplans is available! This home has a beautiful entry foyer and opens into a great family room, dining room and set up with pre-wire to have your gourmet kitchen. Ample storage in your walk-in pantry. The bedrooms upstairs are so large and every one of them has closet space. There is a great office/storage area on the second level. The primary bathroom will have double vanities, separate shower and tub, and plenty of large windows. If you need natural light, this home will not disappoint. The secondary bedrooms are spacious. Laundry room is conveniently located upstairs as well. There is a great loft area in the upstairs area perfect for a second lounging area, reading nook, home office, etc. The sidewalks throughout the community will take you to the pool just up the street. There's a fabulous doggie park to enjoy. You are located just one mile from GA 400, minutes from Lake Lanier, ...

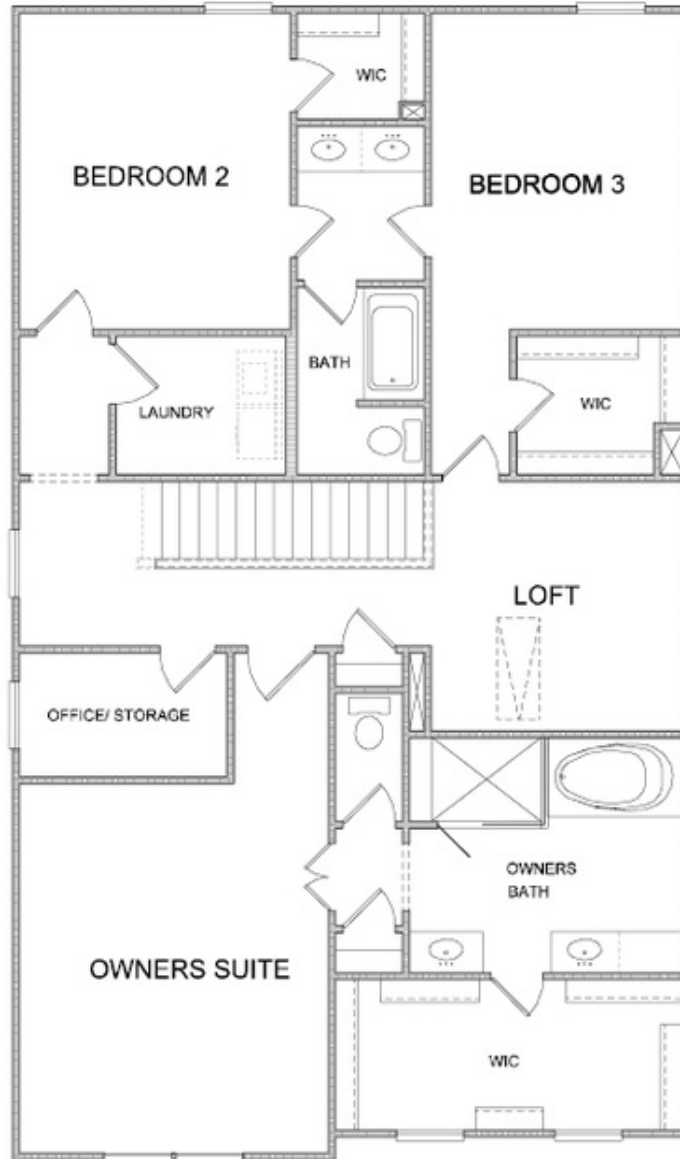
**Want to Know More
About This Home?**

CONTACT OUR COMMUNITY SALES MANAGER
Call Us @ 470.509.9930



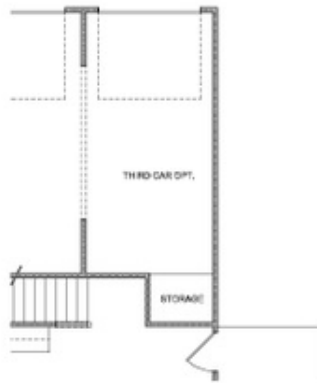
Want to Know More
About This Home?

CONTACT OUR COMMUNITY SALES MANAGER
Call Us @ 470.509.9930

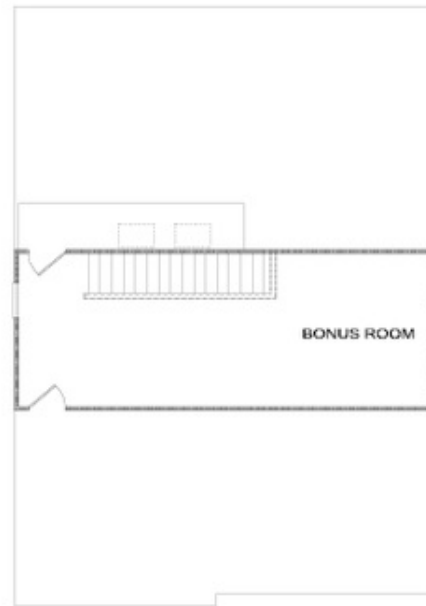


Want to Know More
About This Home?

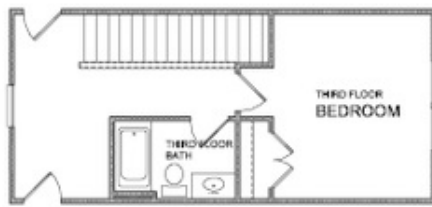
CONTACT OUR COMMUNITY SALES MANAGER
Call Us @ 470.509.9930



OPT Third Car Garage
flo Bedroom 4 & Bath 3



OPT 3rd Floor Bonus Room



OPT 3rd Floor w. Bedroom & Full Bath

OPTIONS

Want to Know More
About This Home?

CONTACT OUR COMMUNITY SALES MANAGER
Call Us @ 470.509.9930