



PRICED AT  
**\$639,150**

 **2483 Sq Ft**

 **4 Beds**

 **3.0 Baths**

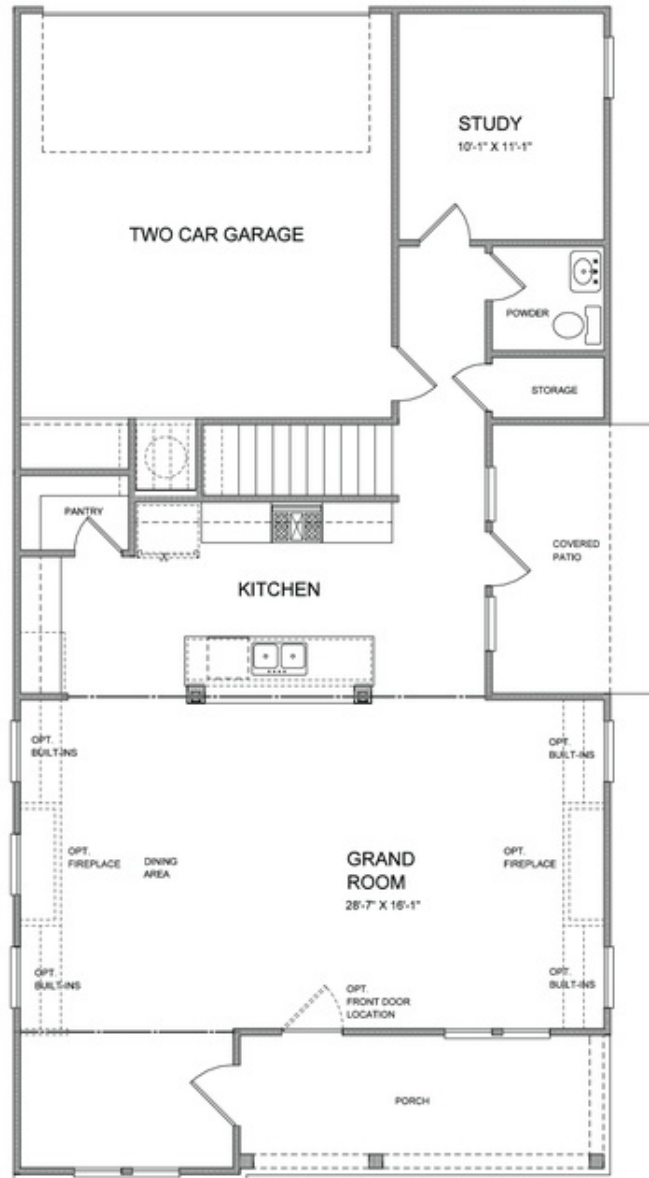
 **2 Car Garage**

 **2.0 Story**

**New Year, New Home, New You! Step into your dream home in 2025 and take advantage of our February savings! We're offering promotional interest rate options to help you save even more. Welcome to The Owens, one of our most popular floorplans, now available at Brackley, one of TPG's newest communities in Cumming, Georgia! With a northeast-facing front door and an array of design options to choose from for a limited time, this stunning single-family home offers a blend of luxury and practicality. From the moment you step through the covered entrance, you'll be impressed by the soaring 10-foot ceilings and 8-foot doors that create a truly open and airy atmosphere throughout the main floor. The heart of this home is the spacious kitchen and family room, designed for both entertaining and everyday living. The gourmet kitchen boasts an abundance of cabinetry and a generous pantry, ensuring ample storage. Natural light floods these rooms through large windows, with direct access to your private courtyard—perfect for enjoying Georgia's fantastic indoor-outdoor lifestyle. On the main floor, you'll also find a versatile office/guest bedroom with a full bath, ideal for guests or a quiet retreat. Upstairs, your primary suite awaits, featuring double vanities ...**

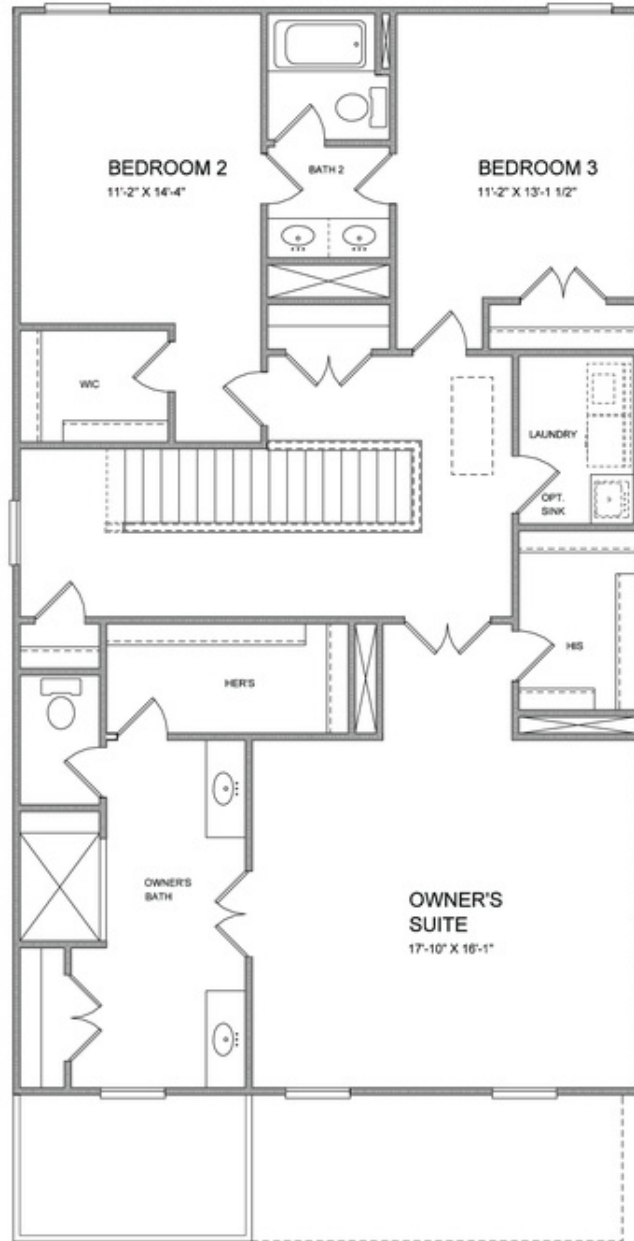
**Want to Know More  
About This Home?**

**CONTACT OUR COMMUNITY SALES MANAGER**  
**Call Us @ 470.509.9930**



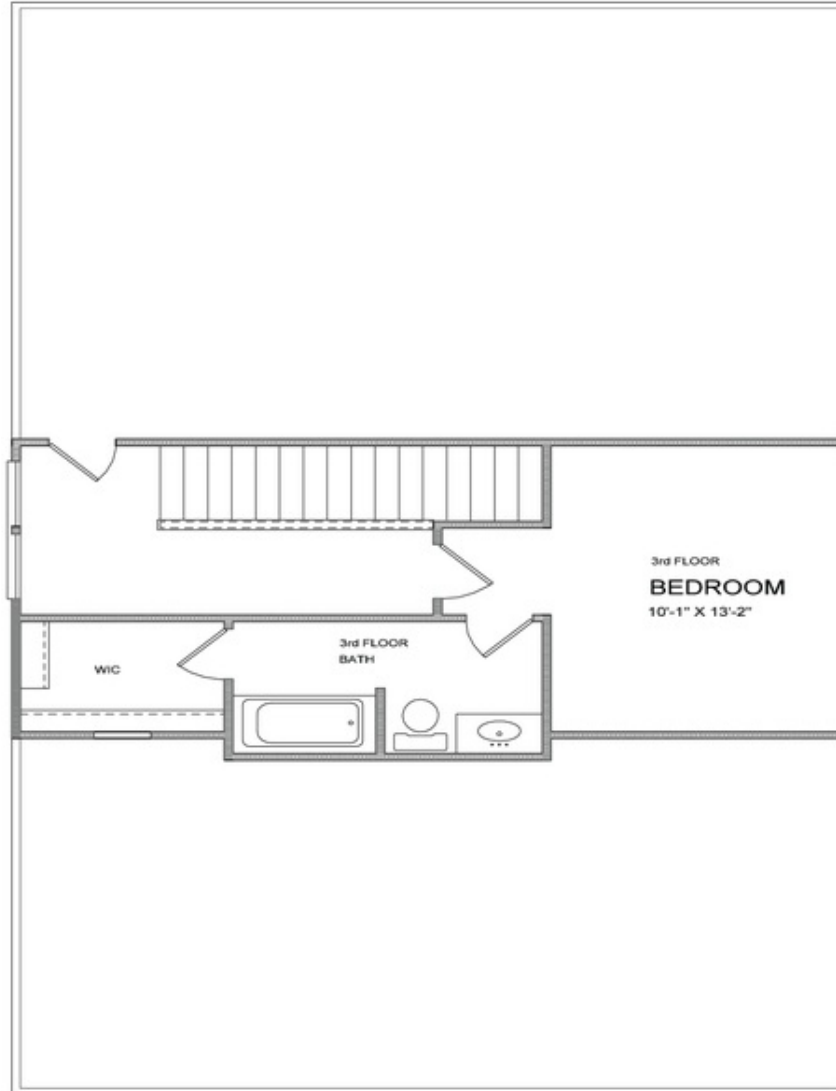
Want to Know More  
About This Home?

CONTACT OUR COMMUNITY SALES MANAGER  
Call Us @ 470.509.9930



Want to Know More  
About This Home?

CONTACT OUR COMMUNITY SALES MANAGER  
Call Us @ 470.509.9930



Want to Know More  
About This Home?

CONTACT OUR COMMUNITY SALES MANAGER  
Call Us @ 470.509.9930



OPTION  
 WHEN EXTERIOR STORAGE SHED



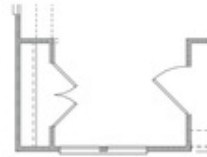
OPTION  
 WHEN EXTERIOR STORAGE and  
 INTERIOR CLOSET



OPTION  
 WHEN BEDROOM 4 and BATH 3



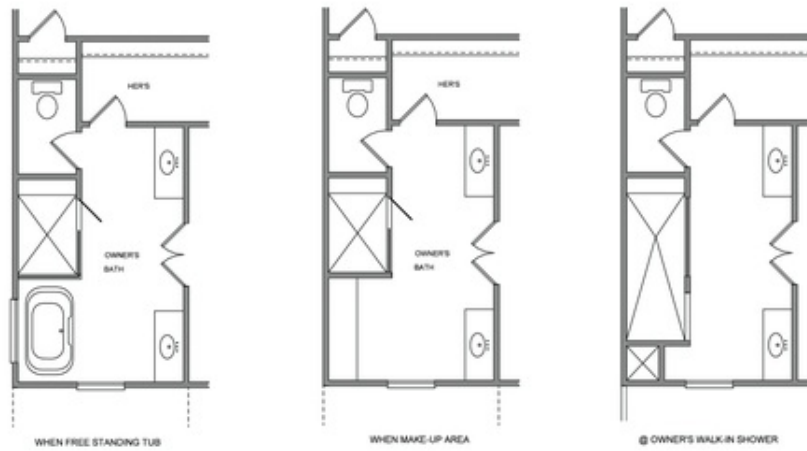
OPTION  
 WHEN P SLIDING GLASS DOOR



OPTION  
 WHEN COAT CLOSET

Want to Know More  
 About This Home?

CONTACT OUR COMMUNITY SALES MANAGER  
 Call Us @ 470.509.9930



Want to Know More  
About This Home?

CONTACT OUR COMMUNITY SALES MANAGER  
Call Us @ 470.509.9930