



PRICED AT
\$659,280

 **2573 Sq Ft**

 **4 Beds**

 **3.5 Baths**

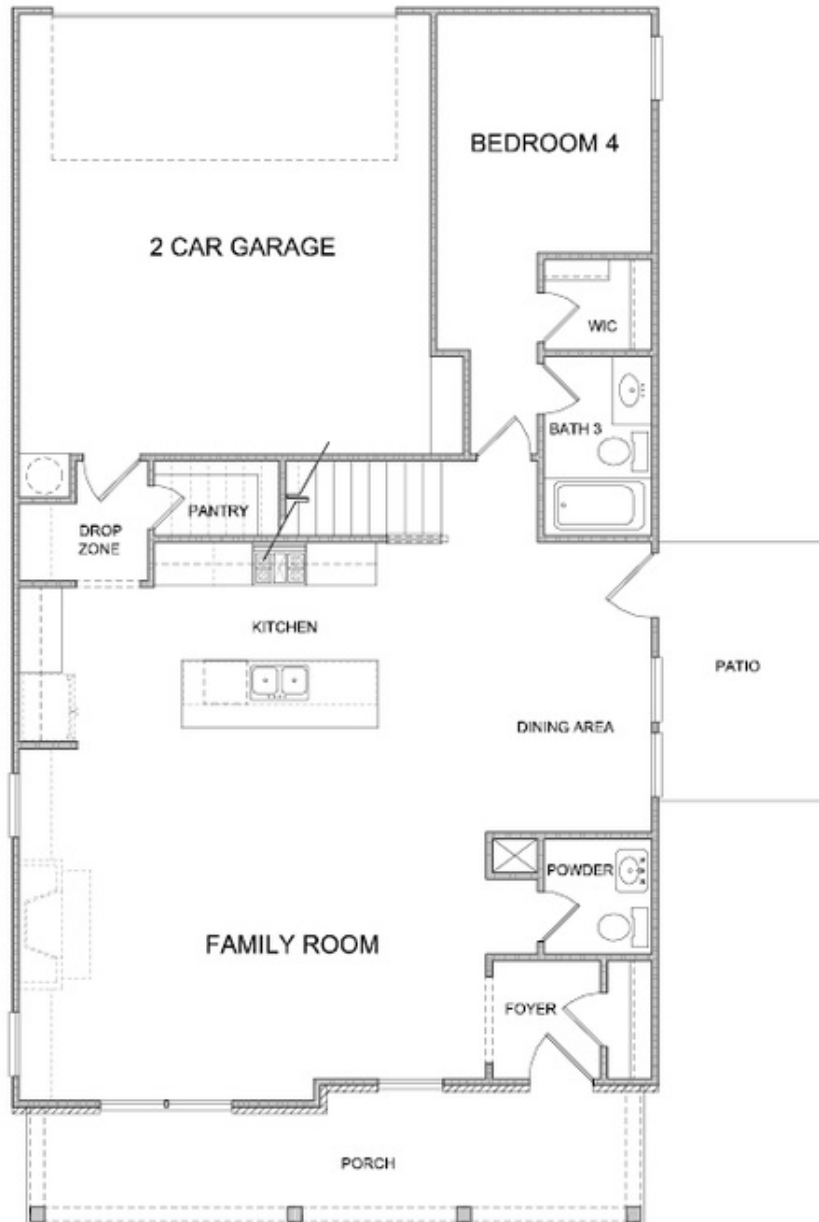
 **2 Car Garage**

 **2.0 Story**

New Year, New Home - Your Dream Home Awaits! Start 2025 in a home that's uniquely yours! This stunning North-facing home, located on a desirable corner homesite in the highly sought-after Brackley community in Cumming, GA, offers additional windows and enhanced curb appeal thanks to its corner location. Set to be move-in ready by June/July 2025, don't miss your chance to own one of our most popular floorplans, the Osbourne. A true masterpiece from The Providence Group, known for their exceptional craftsmanship, this home combines style, quality, and functionality in every detail. Seize this incredible opportunity and make 2025 the year you find your perfect home! Step into a grand entry foyer that leads into an expansive family room and dining area. The open-concept layout is perfect for entertaining, with a gourmet kitchen pre-wired and ready for your personal touch. The spacious walk-in pantry offers tons of storage space for all your needs. Upstairs, you'll find incredibly roomy bedrooms, each with ample closet space, and a versatile office/storage area perfect for whatever your heart desires. The luxurious primary suite features double vanities, a separate shower and tub, and an abundance of windows that let in natural light to create a peaceful ...

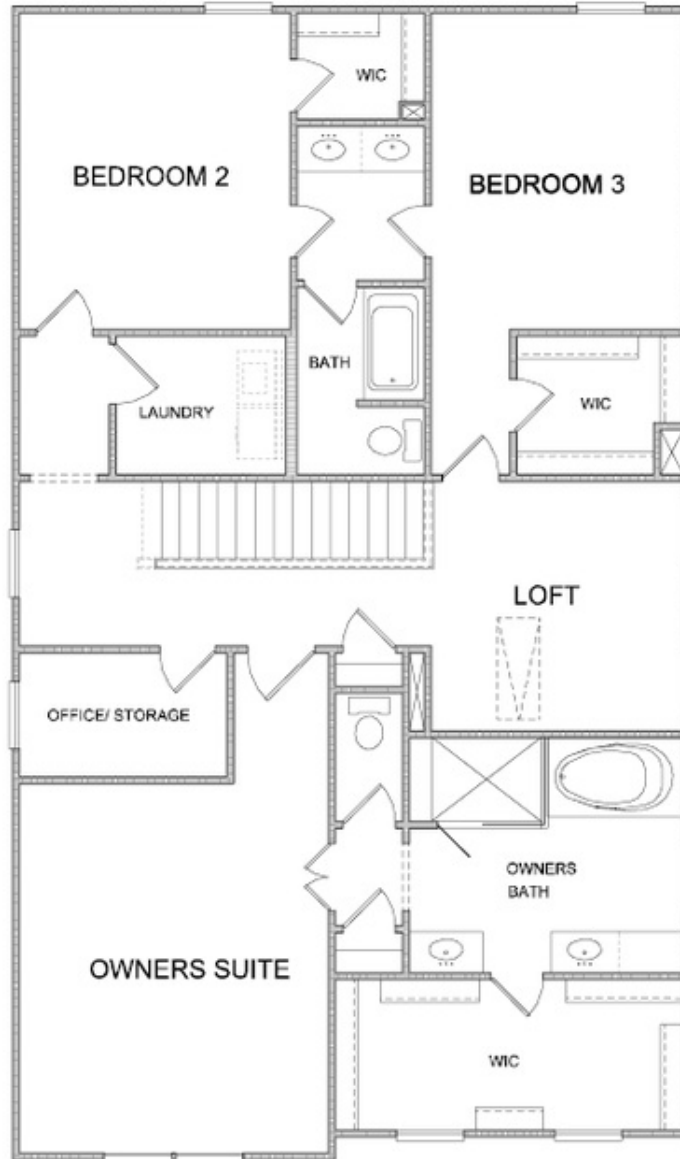
**Want to Know More
About This Home?**

CONTACT OUR COMMUNITY SALES MANAGER
Call Us @ 470.509.9930



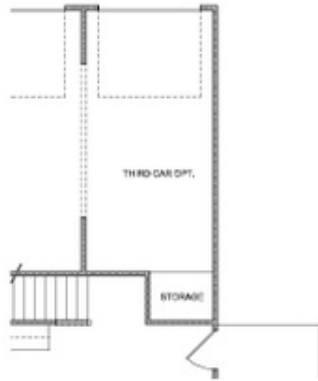
Want to Know More
About This Home?

CONTACT OUR COMMUNITY SALES MANAGER
Call Us @ 470.509.9930

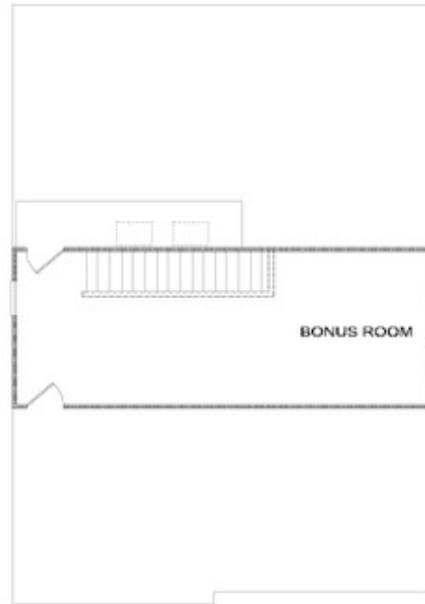


Want to Know More
About This Home?

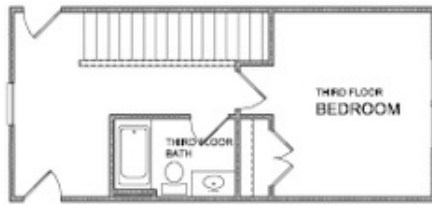
CONTACT OUR COMMUNITY SALES MANAGER
Call Us @ 470.509.9930



OPT Third Car Garage
flo Bedroom 4 & Bath 3



OPT 3rd Floor Bonus Room



OPT 3rd Floor w. Bedroom & Full Bath

OPTIONS

Want to Know More
About This Home?

CONTACT OUR COMMUNITY SALES MANAGER
Call Us @ 470.509.9930