




PRICED AT
\$632,645

 2676 Sq Ft

 4 Beds

 3.5 Baths

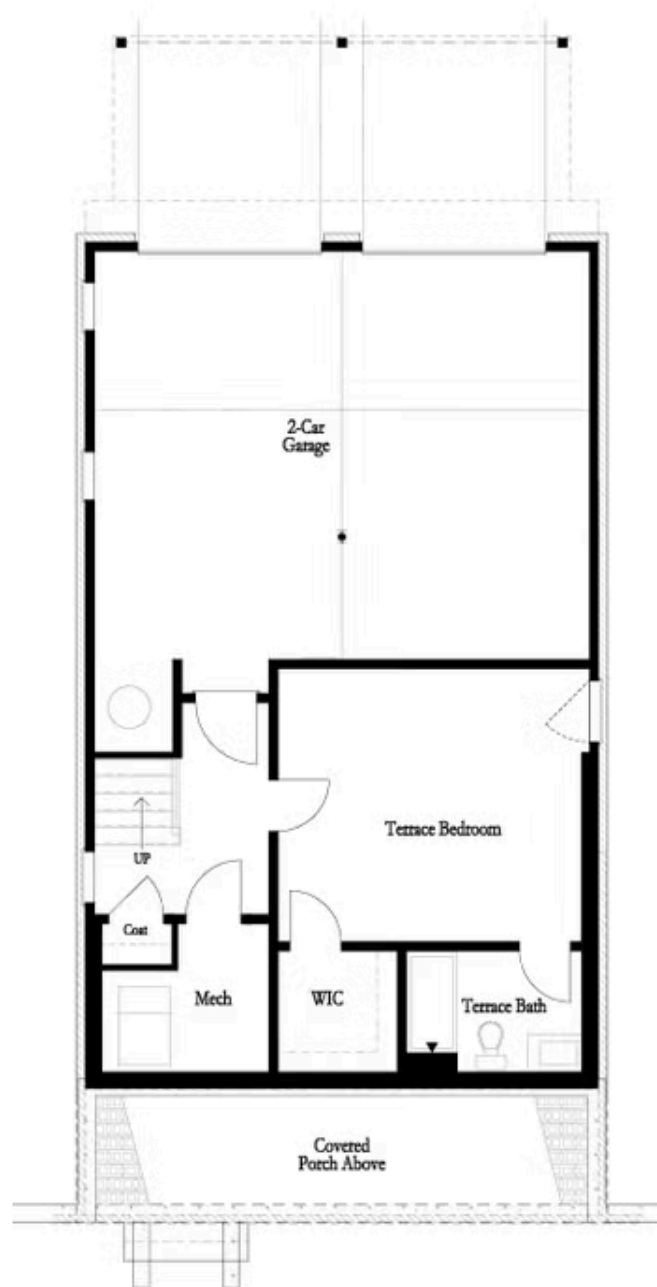
 2 Car Garage

 3.0 Story

Season of Savings- Build your Savings and Unwrap the Joy of a New Home with \$30,000 Promotion which has already been taken off the purchase price. Ends December 31, 2025. Discover the The Greenville by The Providence Group. This home is MOVE IN READY. Experience Exceptional Living at Brackley in the heart of Cumming, GA, just minutes from GA400 and the City Center. Brackley offers the best of both worlds: small-town charm with big-city amenities. Whether you're in the mood to shop, dine, explore, or unwind by the water, you're covered; Lake Lanier is just a few miles away via Buford Dam Road! Discover the perfect blend of privacy, comfort, and convenience in this spacious homesite nestled on a wooded, East-facing lot, ideal for soaking in morning light and enjoying serene views. Step inside one of our most sought-after floor plans: The Greenville. This thoughtfully designed home features a bedroom and full bath on the terrace level, perfect for guests or a private office. The main floor showcases open-concept living at its finest—with soaring 10-foot ceilings, 8-foot doors, and an abundance of natural light streaming through oversized windows. From the welcoming, covered front porch to the stylish kitchen positioned at ...

**Want to Know More
About This Home?**

CONTACT OUR COMMUNITY SALES MANAGER
Call Us @ 470.509.9930



Want to Know More
About This Home?

CONTACT OUR COMMUNITY SALES MANAGER
Call Us @ 470.509.9930



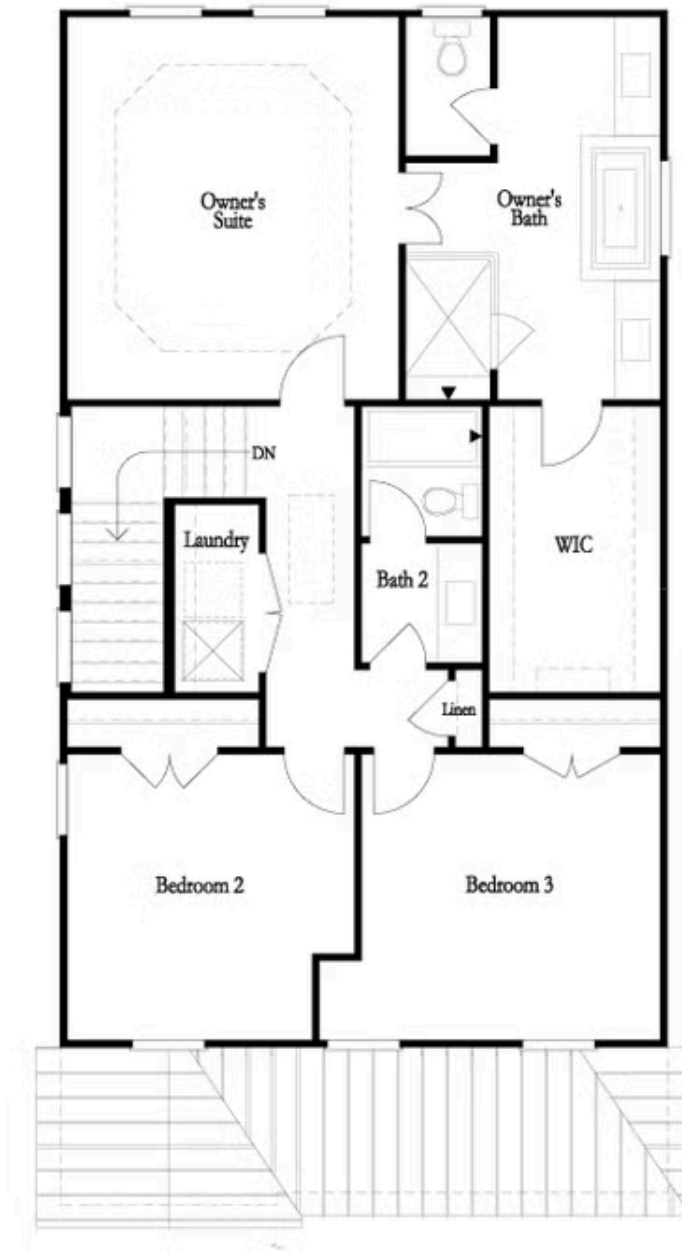
Want to Know More
About This Home?

CONTACT OUR COMMUNITY SALES MANAGER
Call Us @ 470.509.9930



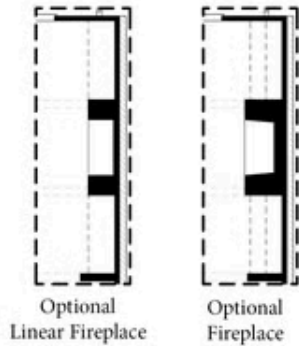
Want to Know More
About This Home?

CONTACT OUR COMMUNITY SALES MANAGER
Call Us @ 470.509.9930

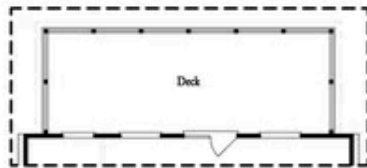


Want to Know More
About This Home?

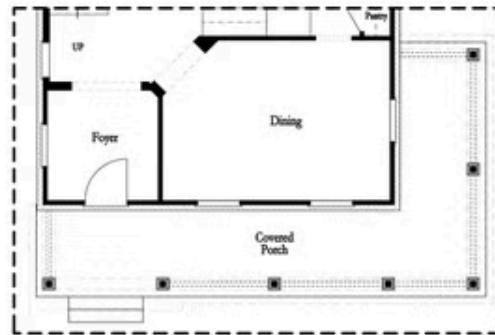
CONTACT OUR COMMUNITY SALES MANAGER
Call Us @ 470.509.9930



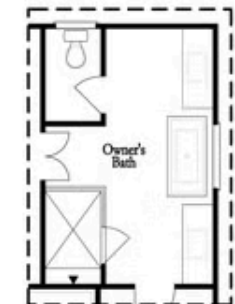
Optional Side Porch
Kitchen Front



Optional Covered Deck
or
Optional Screened Deck



Optional Side Porch
Kitchen Middle



Optional Freestanding Tub
Owner's Bath



Optional Shower
Terrace Bath

Want to Know More
About This Home?

CONTACT OUR COMMUNITY SALES MANAGER
Call Us @ 470.509.9930