




PRICED AT
\$658,390

 2676 Sq Ft

 4 Beds

 3.5 Baths

 2 Car Garage

 3.0 Story

Pick Your Promotion with \$10K - Choose the path to homeownership that fits your life - low rates, upgrades, appliances, closing costs & more. Ends July 31, 2025. Ask us about our preferred lenders—offering up to \$2,500 or rate buy-down options to help you save even more. Welcome to Brackley, our beautiful new community located in Cumming, GA, just one mile from GA 400 and moments from the vibrant City Center. Enjoy unbeatable convenience to shopping, dining, retail, and more—plus, Lake Lanier is just a short drive away on Buford Dam Road. Introducing The Greenville - one of our newest and most thoughtfully designed floorplans. This spacious, open-concept home features: A terrace-level bedroom with full bath - perfect for guests or a private home office. 10-foot ceilings and 8-foot doors on the main level, creating an airy, elegant feel. The welcoming front porch and open foyer sets the tone for modern living. A bright dining room at the front of the home where you are sure to gather for family meals. The chef-inspired kitchen has a huge island and 42" white upper cabinets, 4x12 white tile backsplash with herringbone pattern, single bowl stainless sink with black faucet and cabinet hardware. ...

**Want to Know More
About This Home?**

CONTACT OUR COMMUNITY SALES MANAGER
Call Us @ 470.509.9930



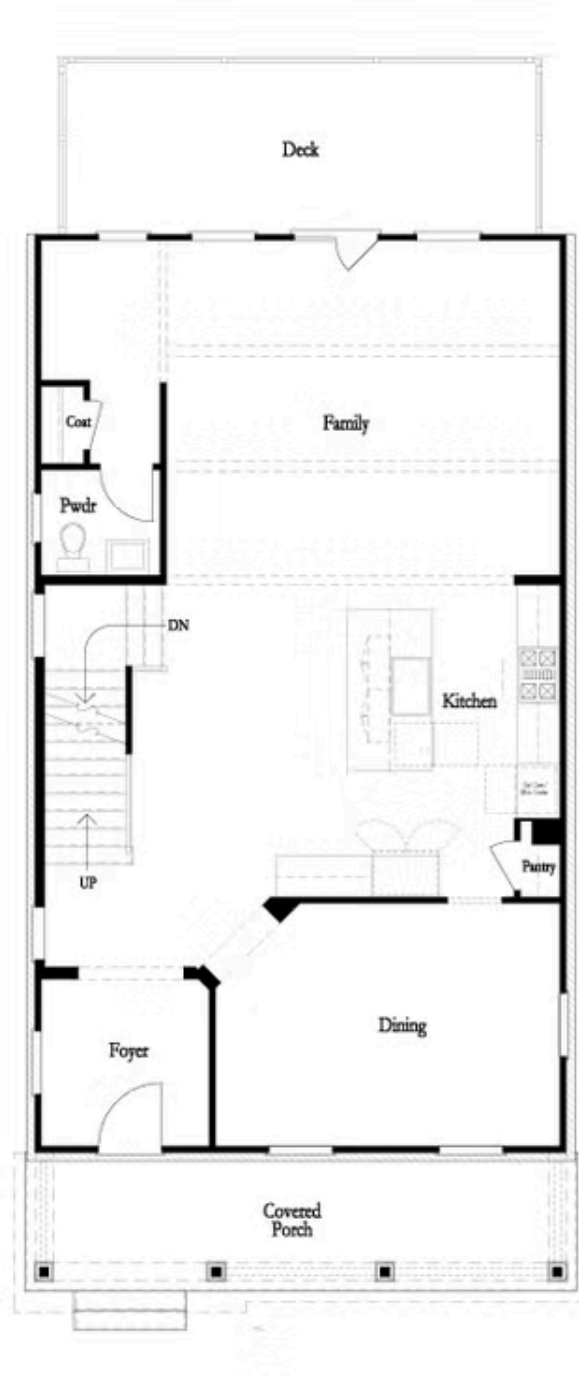
Want to Know More
About This Home?

CONTACT OUR COMMUNITY SALES MANAGER
Call Us @ 470.509.9930



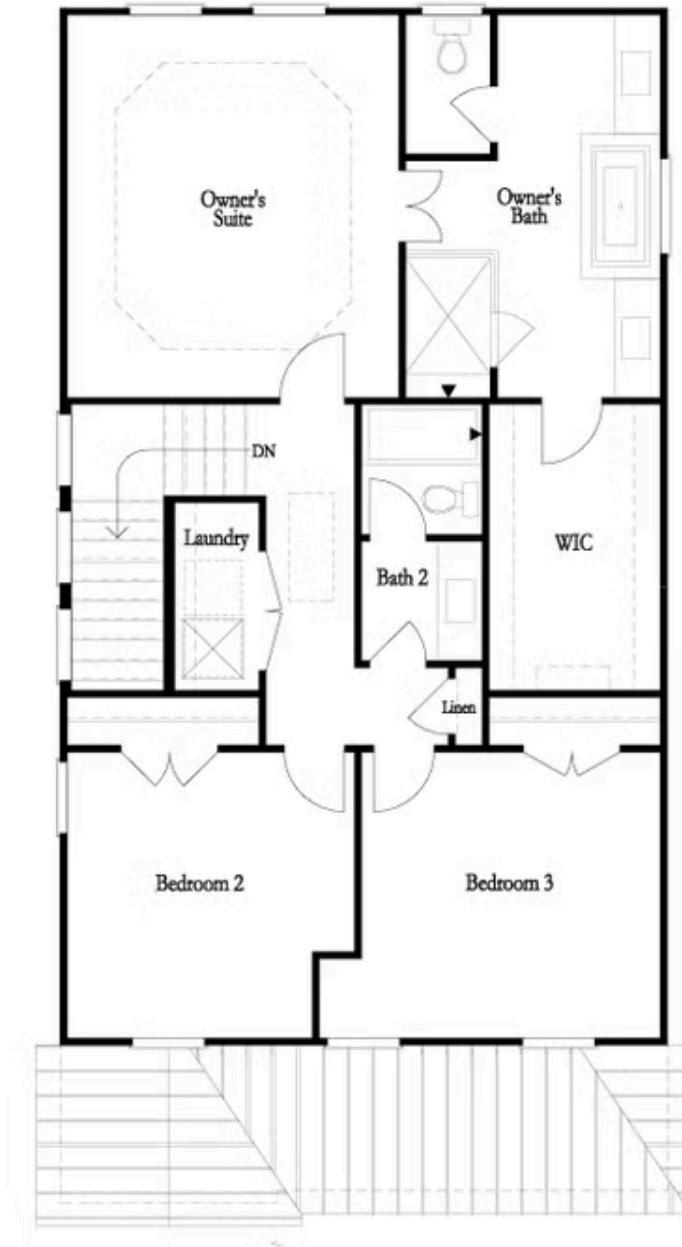
Want to Know More
About This Home?

CONTACT OUR COMMUNITY SALES MANAGER
Call Us @ 470.509.9930



Want to Know More
About This Home?

CONTACT OUR COMMUNITY SALES MANAGER
Call Us @ 470.509.9930



Want to Know More
About This Home?

CONTACT OUR COMMUNITY SALES MANAGER
Call Us @ 470.509.9930



Optional
 Linear Fireplace



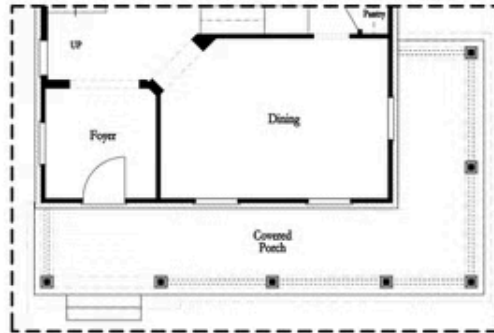
Optional
 Fireplace



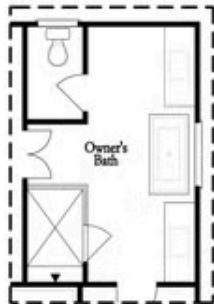
Optional Side Porch
 Kitchen Front



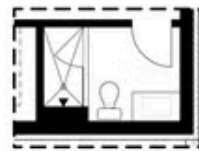
Optional Covered Deck
 OR
 Optional Screened Deck



Optional Side Porch
 Kitchen Middle



Optional Freestanding Tub
 Owner's Bath



Optional Shower
 Terrace Bath

Want to Know More
 About This Home?

CONTACT OUR COMMUNITY SALES MANAGER
 Call Us @ 470.509.9930