



PRICED AT
\$674,310

 **2676 Sq Ft**

 **4 Beds**

 **3.5 Baths**

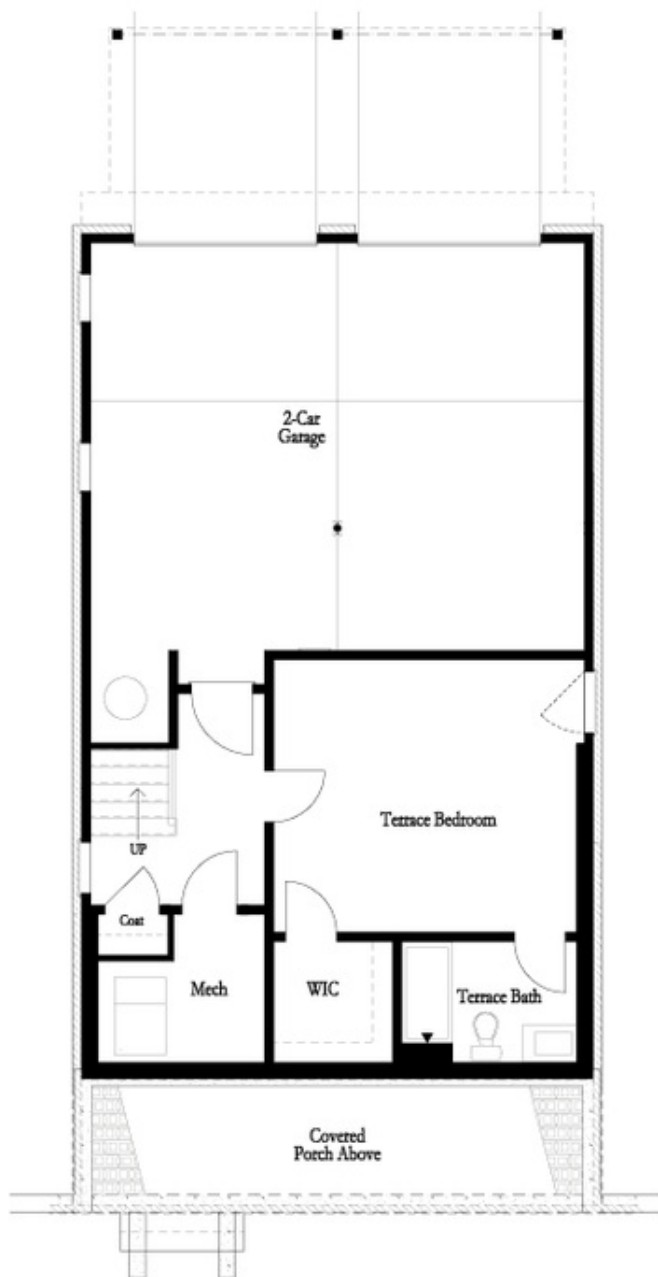
 **2 Car Garage**

 **3.0 Story**

Spring into a new home with The Providence Group! \$15,000 in **DESIGN ALLOWANCE** for contracts written in April! This large homesite is a **CORNER** lot. Come explore our newest and highly anticipated community, Brackley, located in the heart of Cumming, GA! Conveniently close to GA 400 and just minutes from the City Center, Brackley offers a vibrant neighborhood with plenty of shopping, dining, and entertainment options. Love spending time by the water? Lake Lanier is just a few miles away via Buford Dam Road. Discover our latest floor plan, the Greenville, featuring a spacious layout with a bedroom and full bath on the Terrace level. The main floor showcases open-concept living at its best, with soaring 10-foot ceilings and 8-foot doors. As you enter from the charming covered front porch, you'll be greeted by an expansive, light-filled interior. The gourmet kitchen is positioned at the front of the home for easy access and opens to the dining room and great room, which boasts a stunning 55" fireplace. Surrounded by large windows, the space is flooded with natural light, creating a warm and inviting atmosphere. Step outside to a large deck off the family room, perfect for entertaining or unwinding after ...

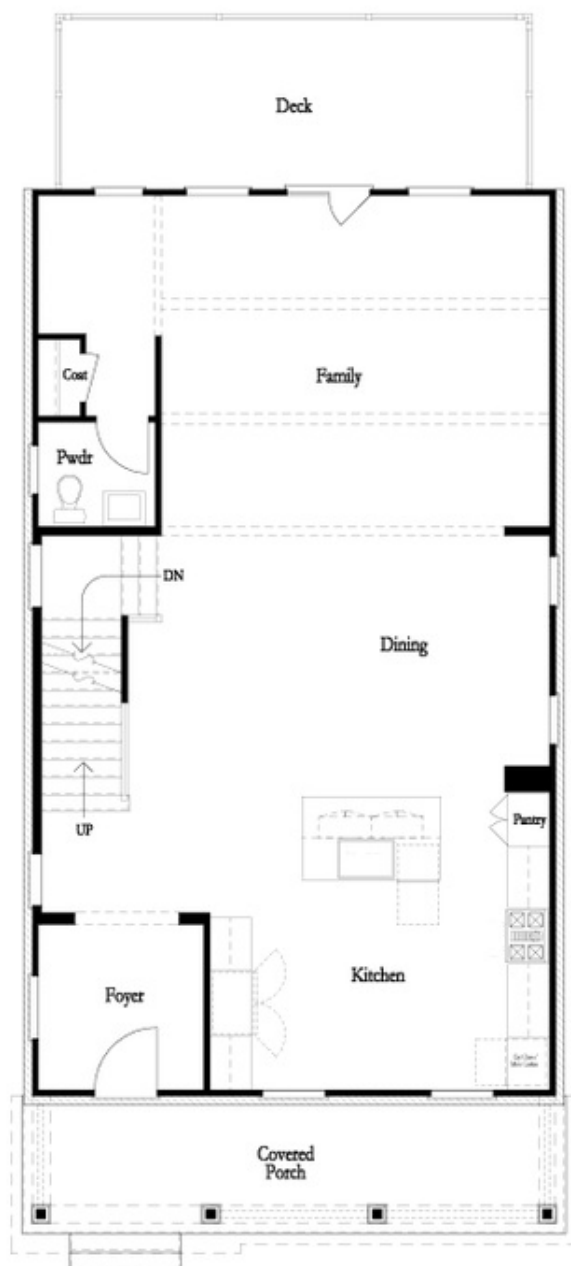
**Want to Know More
About This Home?**

CONTACT OUR COMMUNITY SALES MANAGER
Call Us @ 470.509.9930



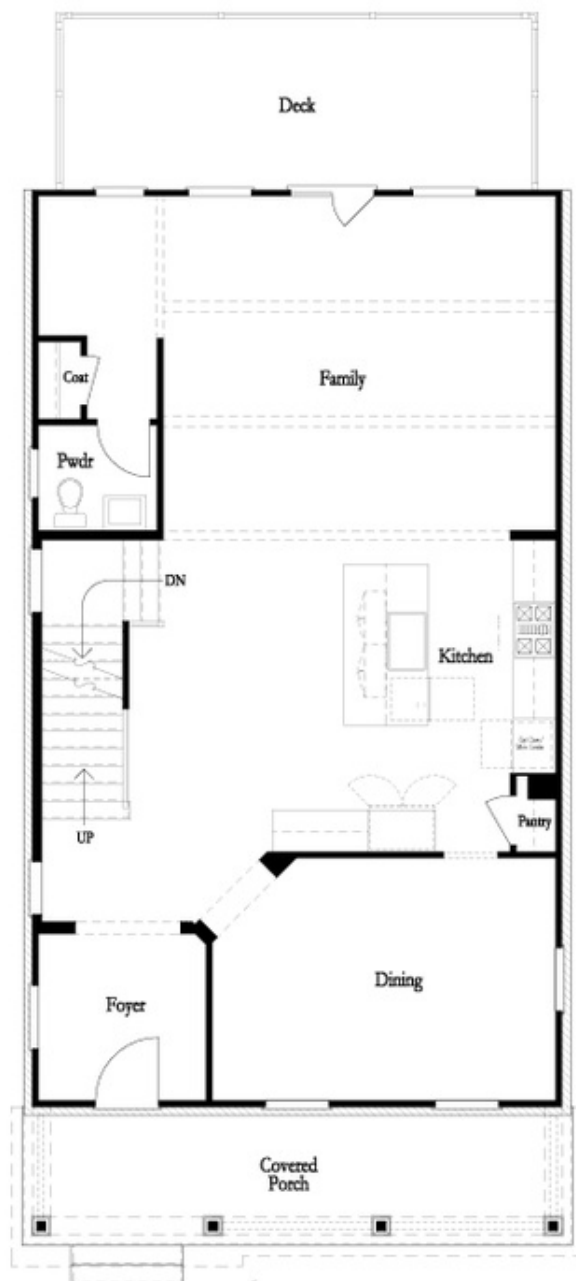
Want to Know More
About This Home?

CONTACT OUR COMMUNITY SALES MANAGER
Call Us @ 470.509.9930



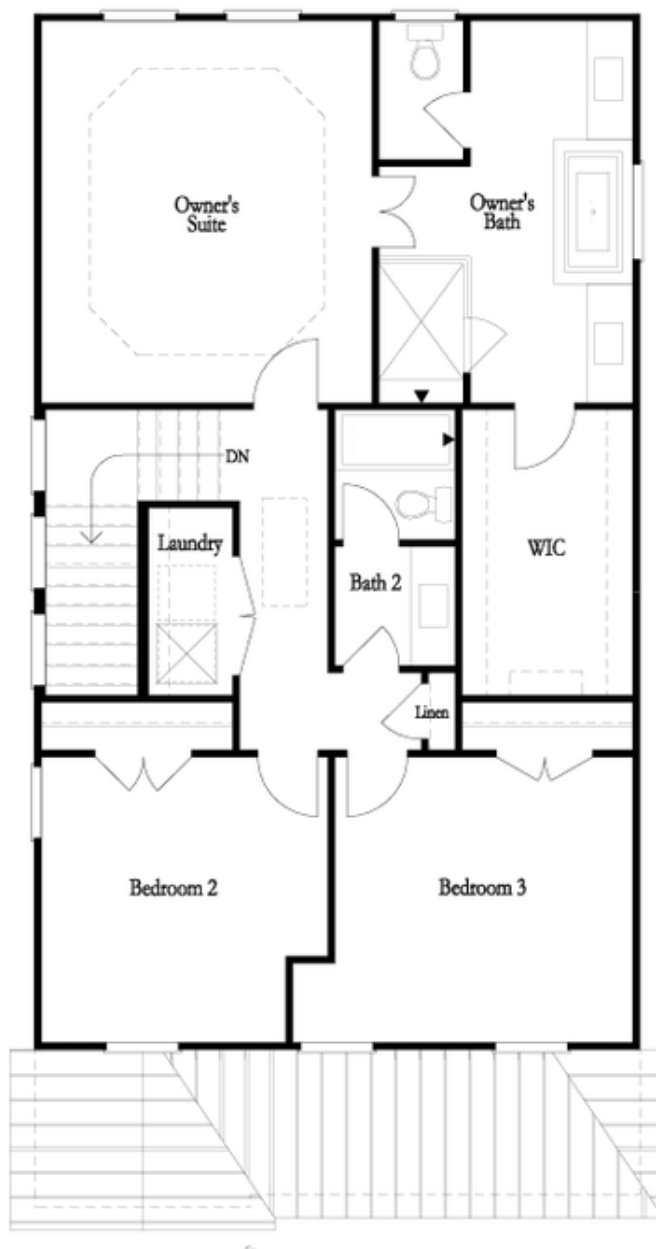
Want to Know More
About This Home?

CONTACT OUR COMMUNITY SALES MANAGER
Call Us @ 470.509.9930



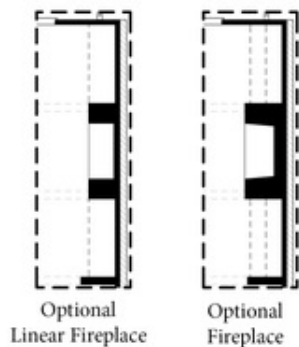
Want to Know More
About This Home?

CONTACT OUR COMMUNITY SALES MANAGER
Call Us @ 470.509.9930

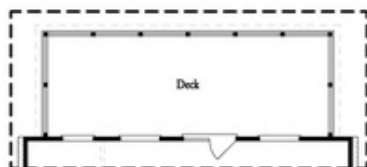


**Want to Know More
About This Home?**

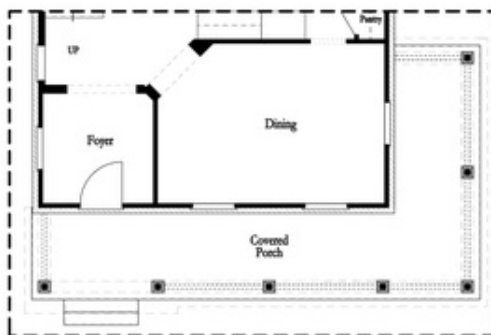
CONTACT OUR COMMUNITY SALES MANAGER
Call Us @ 470.509.9930



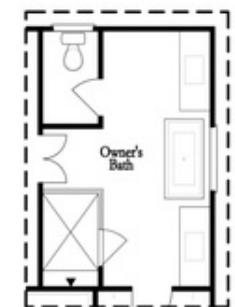
Optional Side Porch
Kitchen Front



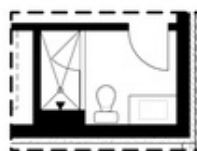
Optional Covered Deck
or
Optional Screened Deck



Optional Side Porch
Kitchen Middle



Optional Freestanding Tub
Owner's Bath



Optional Shower
Terrace Bath

**Want to Know More
About This Home?**

CONTACT OUR COMMUNITY SALES MANAGER
Call Us @ 470.509.9930