



PRICED AT
\$659,475

 **2676 Sq Ft**

 **4 Beds**

 **3.5 Baths**

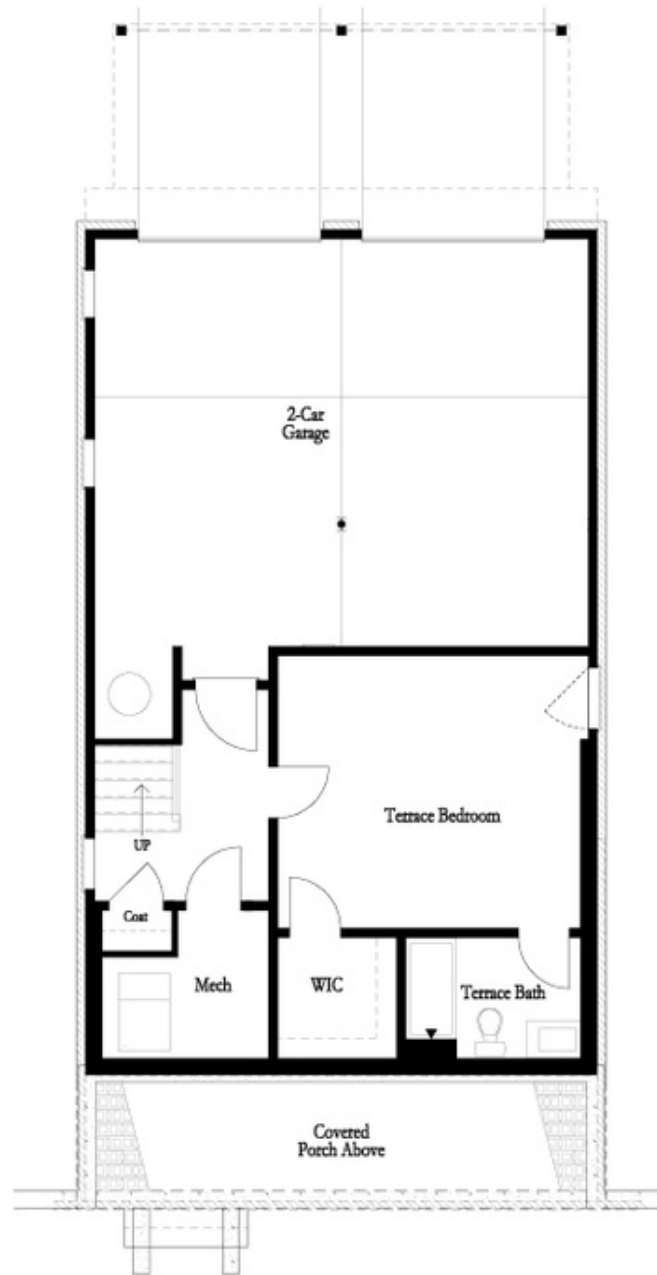
 **2 Car Garage**

 **3.0 Story**

Spring into a new home with The Providence Group! **\$15,000 in DESIGN ALLOWANCE** for contracts written in March! This large homesite is a **CORNER** lot. Come explore our newest and highly anticipated community, Brackley, located in the heart of Cumming, GA! Conveniently close to GA 400 and just minutes from the City Center, Brackley offers a vibrant neighborhood with plenty of shopping, dining, and entertainment options. Love spending time by the water? Lake Lanier is just a few miles away via Buford Dam Road. Discover our latest floor plan, the Greenville, featuring a spacious layout with a bedroom and full bath on the Terrace level. The main floor showcases open-concept living at its best, with soaring 10-foot ceilings and 8-foot doors. As you enter from the charming covered front porch, you'll be greeted by an expansive, light-filled interior. The gourmet kitchen is positioned at the front of the home for easy access and opens to the dining room and great room, which boasts a stunning 55" fireplace. Surrounded by large windows, the space is flooded with natural light, creating a warm and inviting atmosphere. Step outside to a large deck off the family room, perfect for entertaining or unwinding after ...

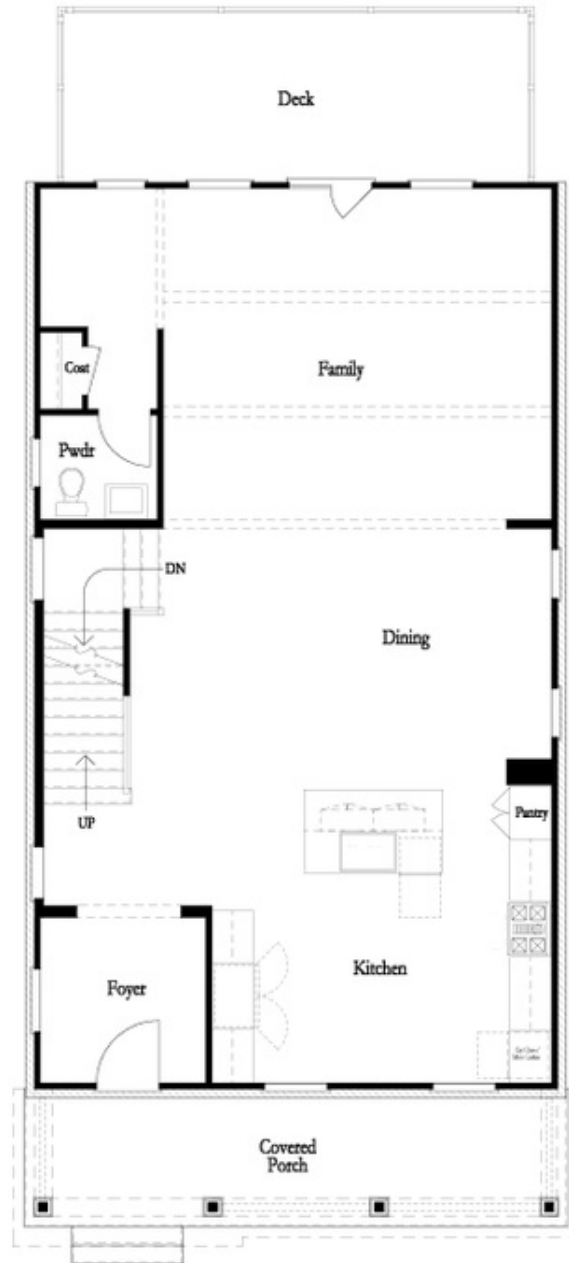
Want to Know More
About This Home?

CONTACT OUR COMMUNITY SALES MANAGER
Call Us @ 470.509.9930



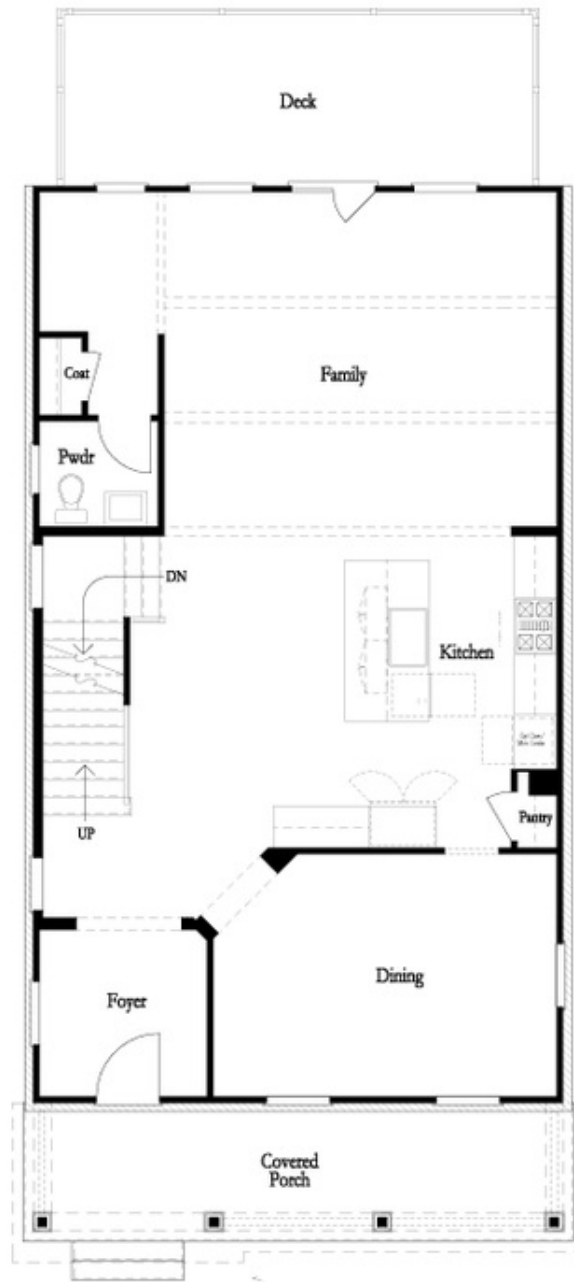
Want to Know More
About This Home?

CONTACT OUR COMMUNITY SALES MANAGER
Call Us @ 470.509.9930



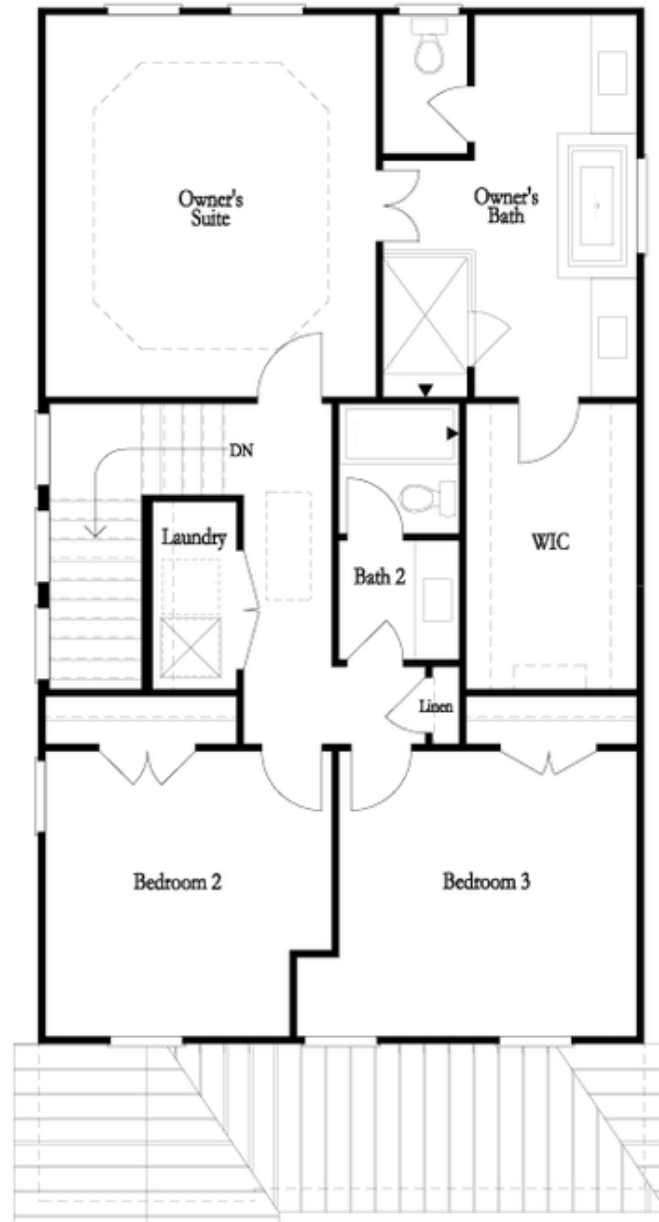
Want to Know More
About This Home?

CONTACT OUR COMMUNITY SALES MANAGER
Call Us @ 470.509.9930



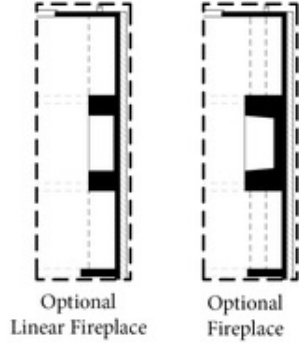
Want to Know More
About This Home?

CONTACT OUR COMMUNITY SALES MANAGER
Call Us @ 470.509.9930



Want to Know More
About This Home?

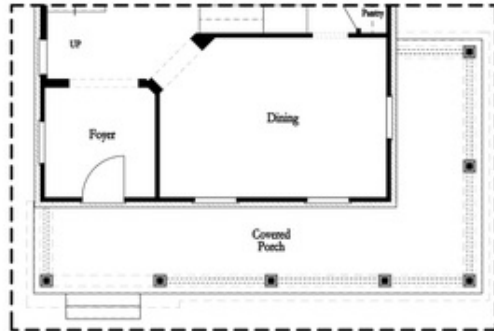
CONTACT OUR COMMUNITY SALES MANAGER
Call Us @ 470.509.9930



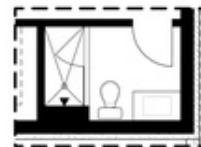
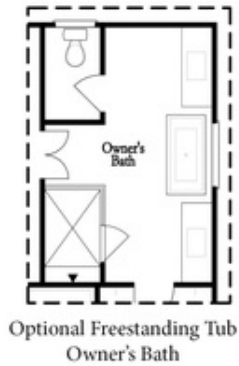
Optional Side Porch
 Kitchen Front



Optional Covered Deck
 or
 Optional Screened Deck



Optional Side Porch
 Kitchen Middle



Want to Know More
 About This Home?

CONTACT OUR COMMUNITY SALES MANAGER
 Call Us @ 470.509.9930