



PRICED AT  
**\$674,310**

 2676 Sq Ft

 4 Beds

 3.5 Baths

 2 Car Garage

 3.0 Story

Spring into a new home with The Providence Group! \$10,000 Anyway and \$7,500 in closing costs for contracts written in May! Ask us about our preferred lenders—offering up to \$2,500 or rate buy-down options to help you save even more. This large homesite is a CORNER lot. Come explore our newest and highly anticipated community, Brackley, located in the heart of Cumming, GA! Conveniently close to GA 400 and just minutes from the City Center, Brackley offers a vibrant neighborhood with plenty of shopping, dining, and entertainment options. Love spending time by the water? Lake Lanier is just a few miles away via Buford Dam Road. Discover our latest floor plan, the Greenville, featuring a spacious layout with a bedroom and full bath on the Terrace level. The main floor showcases open-concept living at its best, with soaring 10-foot ceilings and 8-foot doors. As you enter from the charming covered front porch, you'll be greeted by an expansive, light-filled interior. The gourmet kitchen is positioned at the front of the home for easy access and opens to the dining room and great room, which boasts a stunning 55" fireplace. Surrounded by large windows, the space is flooded with natural light, ...

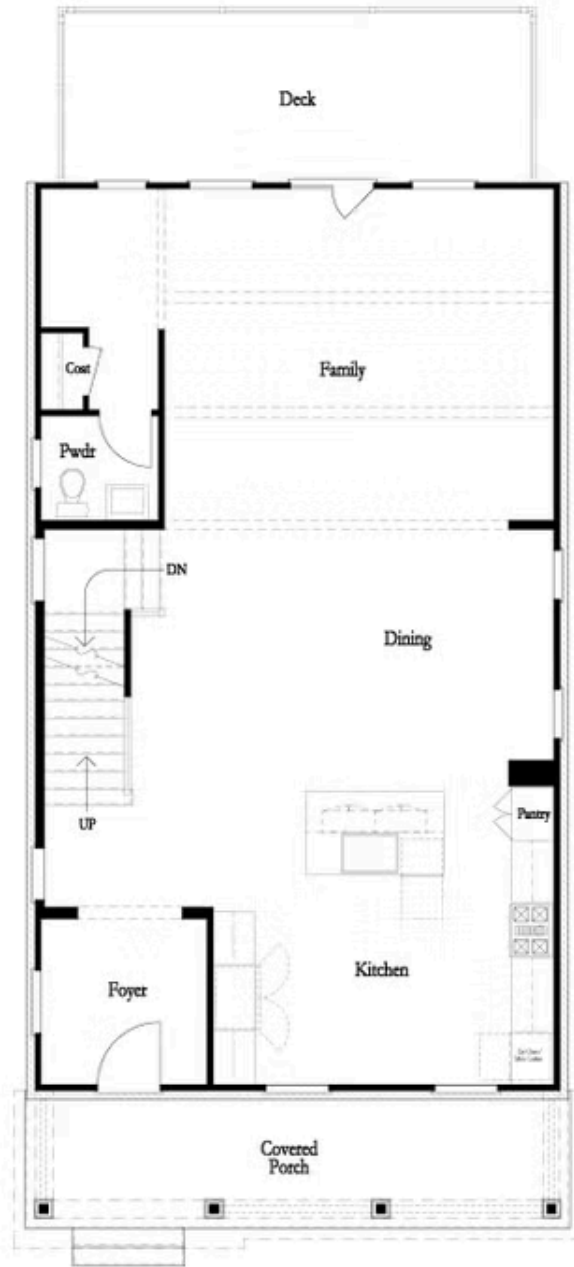
**Want to Know More  
About This Home?**

CONTACT OUR COMMUNITY SALES MANAGER  
Call Us @ 470.509.9930



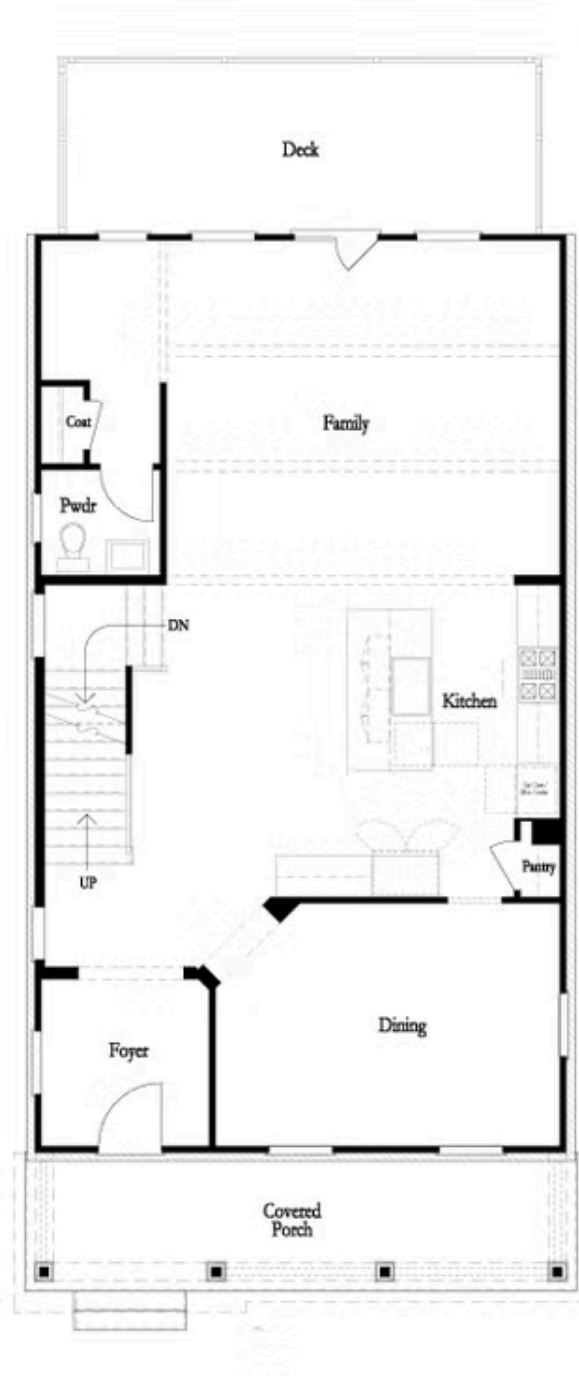
Want to Know More  
About This Home?

CONTACT OUR COMMUNITY SALES MANAGER  
Call Us @ 470.509.9930



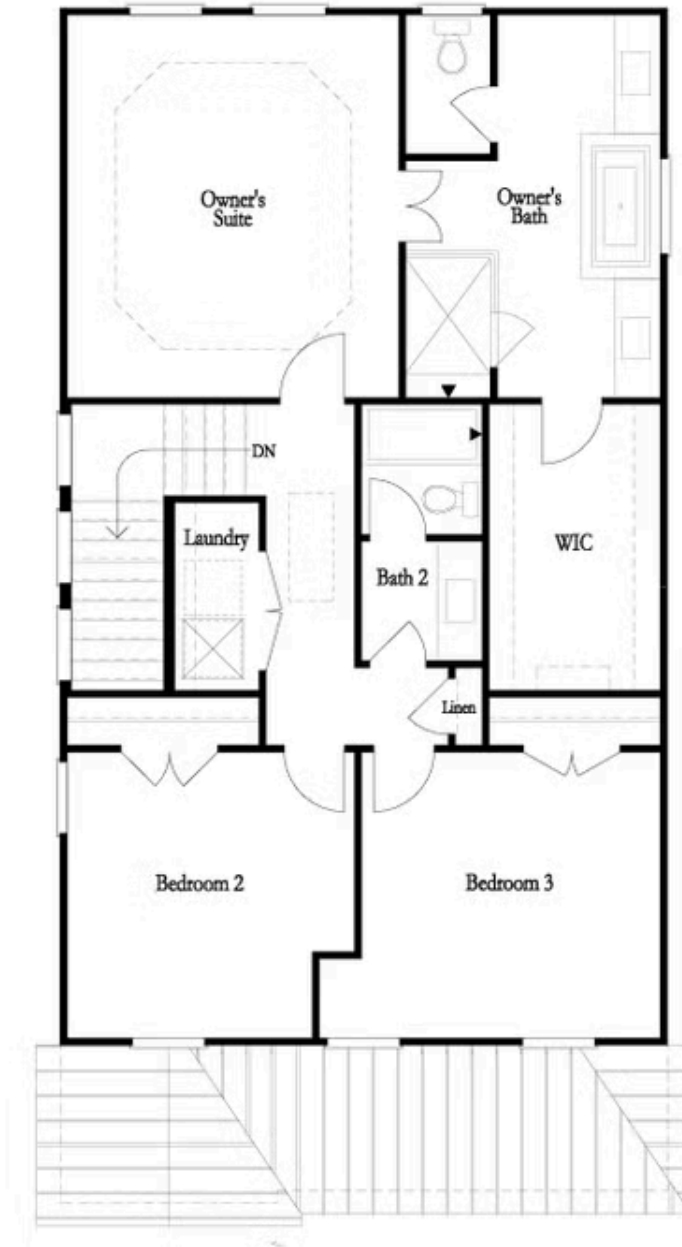
Want to Know More  
About This Home?

CONTACT OUR COMMUNITY SALES MANAGER  
Call Us @ 470.509.9930



Want to Know More  
About This Home?

CONTACT OUR COMMUNITY SALES MANAGER  
Call Us @ 470.509.9930



Want to Know More  
About This Home?

CONTACT OUR COMMUNITY SALES MANAGER  
Call Us @ 470.509.9930



Optional  
 Linear Fireplace



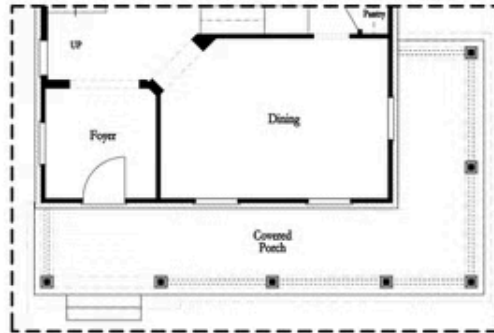
Optional  
 Fireplace



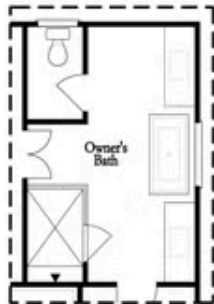
Optional Side Porch  
 Kitchen Front



Optional Covered Deck  
 OR  
 Optional Screened Deck



Optional Side Porch  
 Kitchen Middle



Optional Freestanding Tub  
 Owner's Bath



Optional Shower  
 Terrace Bath

Want to Know More  
 About This Home?

CONTACT OUR COMMUNITY SALES MANAGER  
 Call Us @ 470.509.9930