



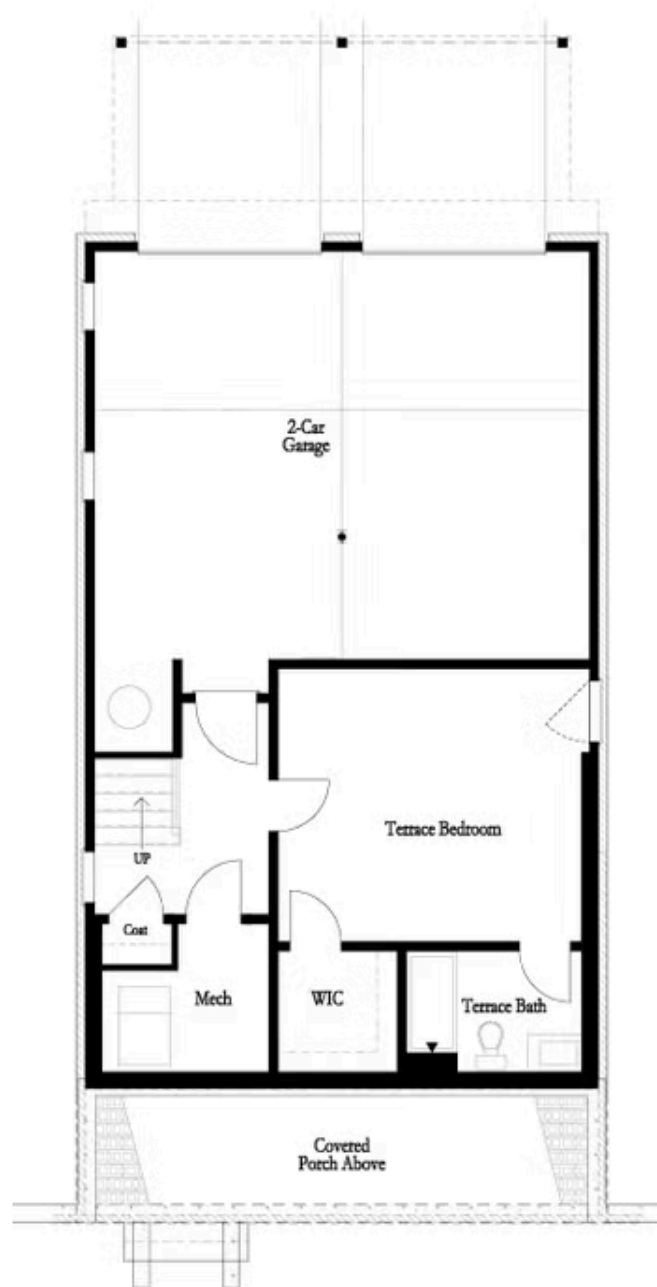
PRICED AT
\$674,310

-  2676 Sq Ft
-  4 Beds
-  3.5 Baths
-  2 Car Garage
-  3.0 Story

Summer of Savings with The Providence Group! \$10,000 Anyway and \$5,000 in closing costs for contracts written in June! Ask us about our preferred lenders—offering up to \$2,500 or rate buy-down options to help you save even more. This large homesite is a CORNER lot and ready to close July/August. Come explore our newest and highly anticipated community, Brackley, located in the heart of Cumming, GA! Conveniently close to GA 400 and just minutes from the City Center, Brackley offers a vibrant neighborhood with plenty of shopping, dining, and entertainment options. Love spending time by the water? Lake Lanier is just a few miles away via Buford Dam Road. Discover our latest floor plan, the Greenville, featuring a spacious layout with a bedroom and full bath on the Terrace level. The main floor showcases open-concept living at its best, with soaring 10-foot ceilings and 8-foot doors. As you enter from the charming covered front porch, you'll be greeted by an expansive, light-filled interior. The gourmet kitchen is positioned at the front of the home for easy access and opens to the dining room and great room, which boasts a stunning 55" fireplace. Surrounded by large windows, the space is flooded ...

**Want to Know More
About This Home?**

CONTACT OUR COMMUNITY SALES MANAGER
Call Us @ 470.509.9930



Want to Know More
About This Home?

CONTACT OUR COMMUNITY SALES MANAGER
Call Us @ 470.509.9930



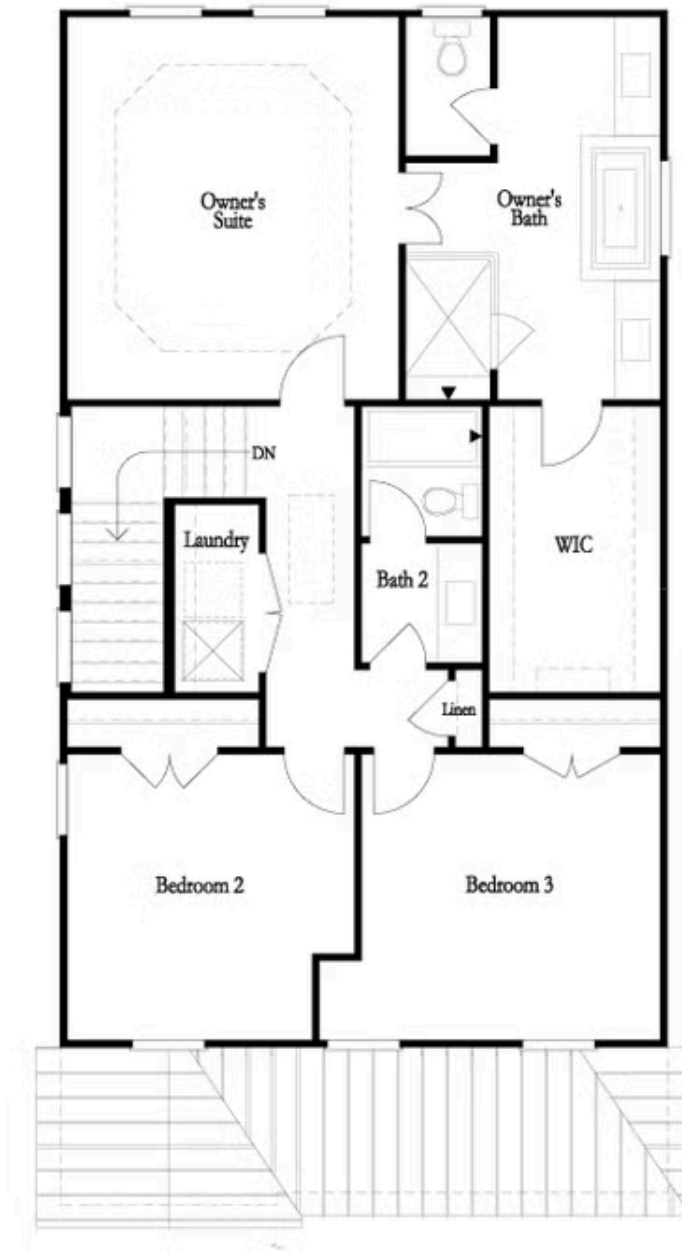
Want to Know More
About This Home?

CONTACT OUR COMMUNITY SALES MANAGER
Call Us @ 470.509.9930



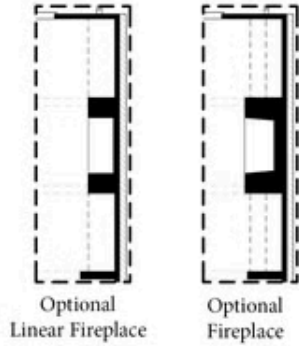
Want to Know More
About This Home?

CONTACT OUR COMMUNITY SALES MANAGER
Call Us @ 470.509.9930



**Want to Know More
About This Home?**

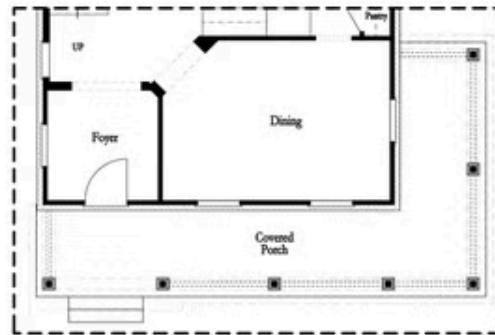
CONTACT OUR COMMUNITY SALES MANAGER
Call Us @ 470.509.9930



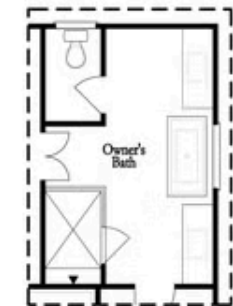
Optional Side Porch
Kitchen Front



Optional Covered Deck
or
Optional Screened Deck



Optional Side Porch
Kitchen Middle



Optional Freestanding Tub
Owner's Bath



Optional Shower
Terrace Bath

Want to Know More
About This Home?

CONTACT OUR COMMUNITY SALES MANAGER
Call Us @ 470.509.9930