



PRICED FROM
\$622,900

 2,676 Sq Ft

 4 Beds

 3.5 Baths

 2 Car Garage

 3.0 Story

- Terrace Bedroom with Full Bath
- Spacious Three Story Design with Open Main Level Layout
- Chef's Kitchen with Island overlooking Dining and Family Room
- Large Rear Deck off Family Room
- Owner's Suite and Private Bath with Dual Vanities, Soaking Tub, Walk-In Shower, & Huge Walk-In Closet
- Secondary Bedrooms on Upper Level
- Two Car Garage

[Read More Online](#)

Available Elevations



Elevation A (Siding)



Elevation B



Elevation C



Want to Know More
About This Home?

CONTACT OUR COMMUNITY SALES MANAGER
Call Us @ 470.509.9930



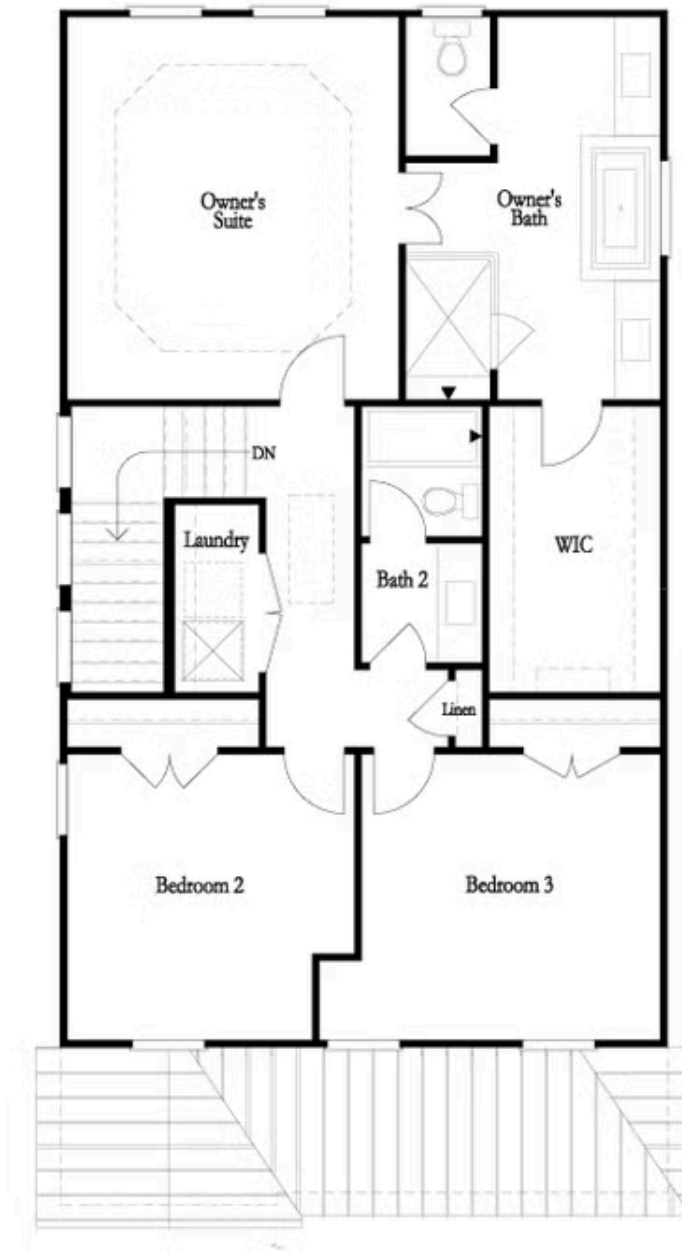
Want to Know More
About This Home?

CONTACT OUR COMMUNITY SALES MANAGER
Call Us @ 470.509.9930



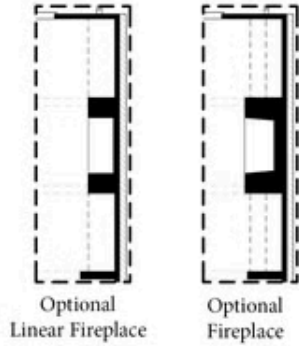
Want to Know More
About This Home?

CONTACT OUR COMMUNITY SALES MANAGER
Call Us @ 470.509.9930

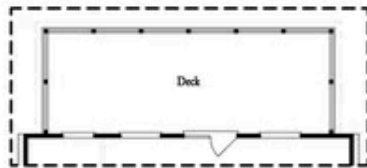


**Want to Know More
About This Home?**

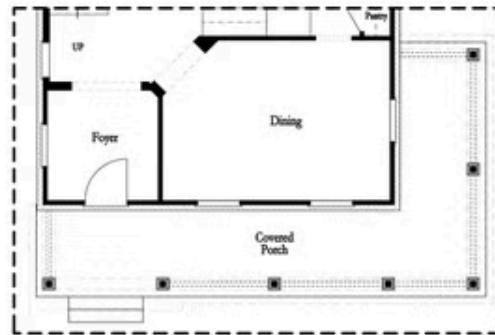
CONTACT OUR COMMUNITY SALES MANAGER
Call Us @ 470.509.9930



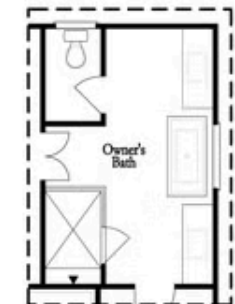
Optional Side Porch
Kitchen Front



Optional Covered Deck
or
Optional Screened Deck



Optional Side Porch
Kitchen Middle



Optional Freestanding Tub
Owner's Bath



Optional Shower
Terrace Bath

Want to Know More
About This Home?

CONTACT OUR COMMUNITY SALES MANAGER
Call Us @ 470.509.9930