




PRICED FROM  
**\$614,900**

 2,483 - 2,895 Sq Ft

 3 - 5 Beds

 2.5 - 4 Baths

 2 Car Garage

 2.0 - 3.0 Story

- Open Main Level Layout with Large Kitchen with Island Overlooking the Family Room and Private Covered Patio
- Owner's Suite Offers Two Large Walk In Closets and Spacious Bath with Dual Vanities
- Two Secondary Bedrooms on the Upper Level with Shared Full Bath
- Optional Third Level Retreat with Bedroom and Full Bath
- Two Car Rear Entry Garage

[Read More Online](#)

## Available Elevations



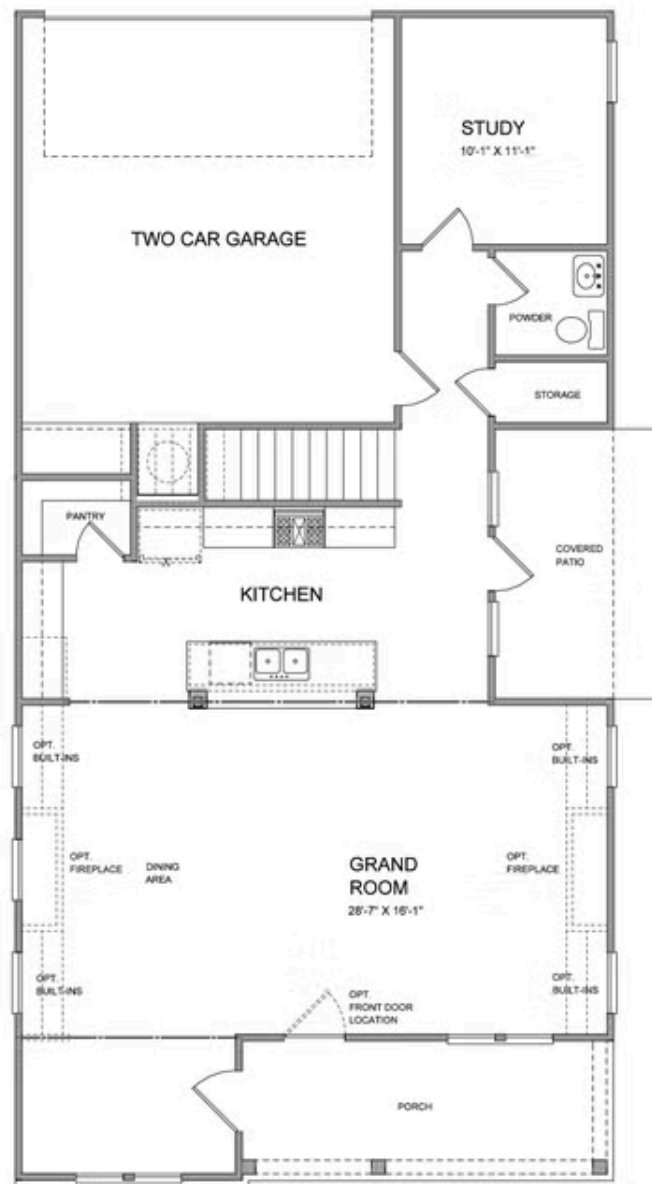
Elevation B



Elevation C

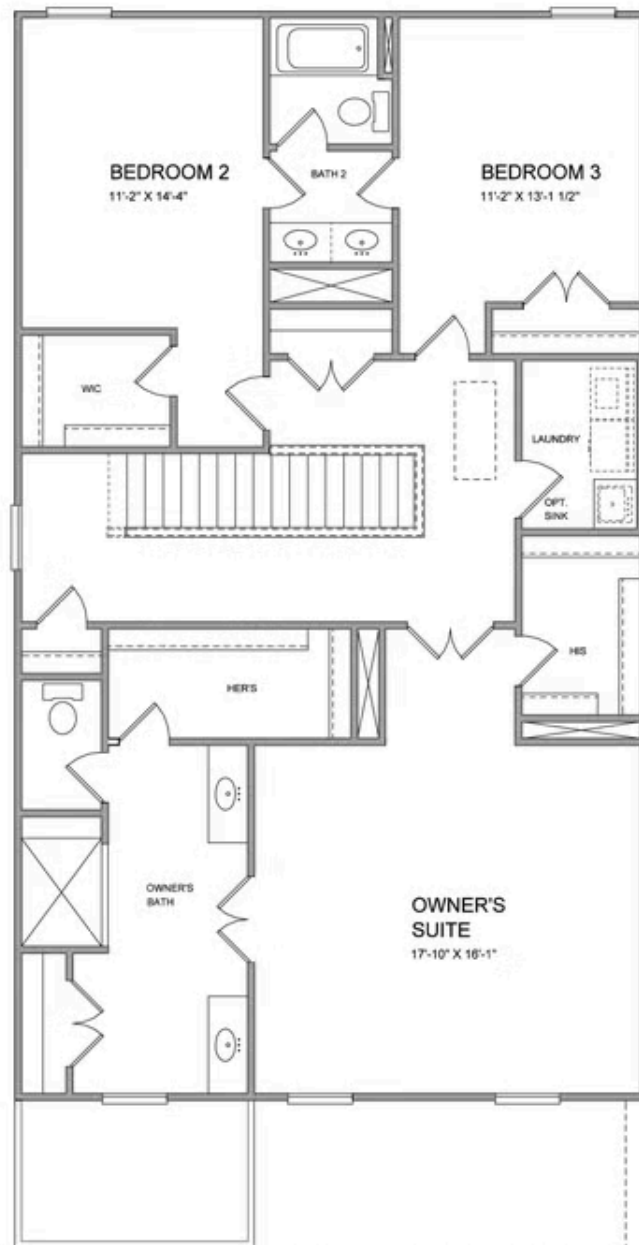


Elevation D



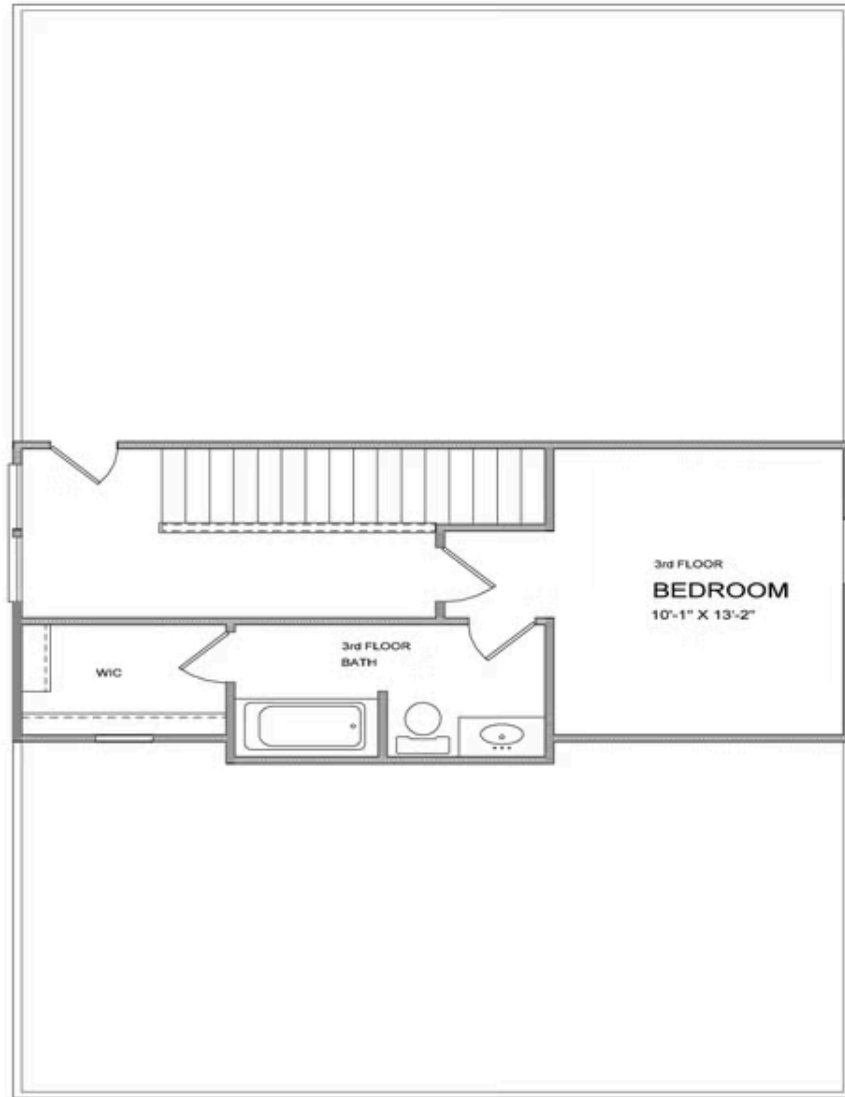
Want to Know More  
About This Home?

CONTACT OUR COMMUNITY SALES MANAGER  
Call Us @ 470.509.9930



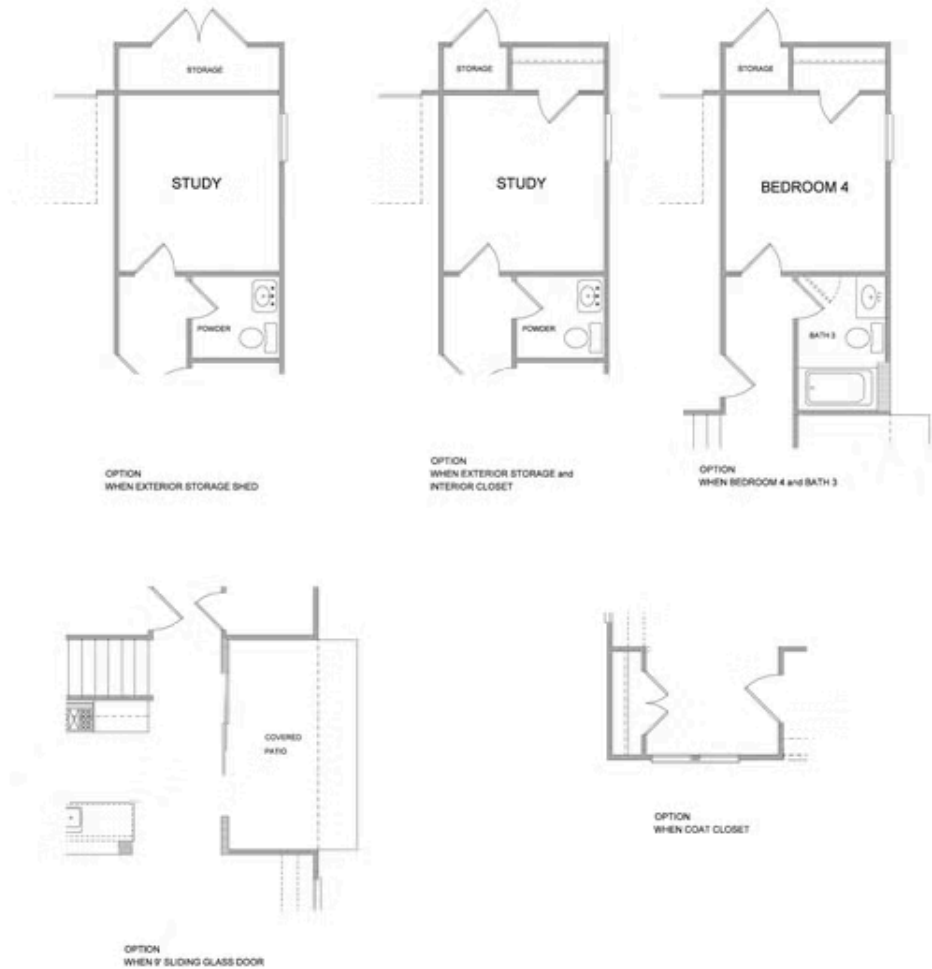
Want to Know More  
About This Home?

CONTACT OUR COMMUNITY SALES MANAGER  
Call Us @ 470.509.9930



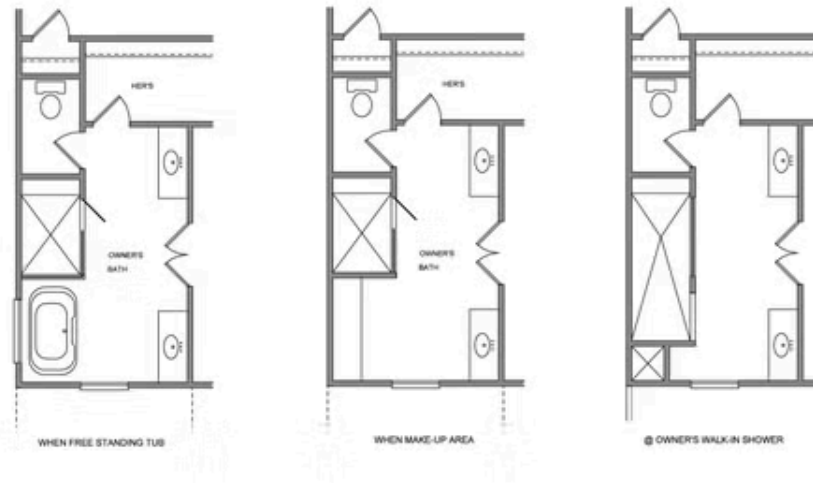
Want to Know More  
About This Home?

CONTACT OUR COMMUNITY SALES MANAGER  
Call Us @ 470.509.9930



Want to Know More  
About This Home?

CONTACT OUR COMMUNITY SALES MANAGER  
Call Us @ 470.509.9930



Want to Know More  
About This Home?

CONTACT OUR COMMUNITY SALES MANAGER  
Call Us @ 470.509.9930