




PRICED AT
\$694,450

 2676 Sq Ft

 4 Beds

 3.5 Baths

 2 Car Garage

 3.0 Story

Spring into a New Home! This home is currently under construction and eagerly awaiting your arrival with an expected completion date of March/April 2025! Now's your chance to secure your place in Brackley, one of the most coveted communities in Cumming, GA. Perfectly located near GA 400 and just minutes from the lively City Center, Brackley offers a wonderful blend of convenience and tranquility, with an array of shopping, dining, and entertainment just around the corner. Plus, you'll be a short drive from the serene beauty of the lake along Buford Dam Road. Welcome to the beautiful Greenville floorplan, thoughtfully designed for both modern living and comfort. On the Terrace level, you'll find a private bedroom and full bath—ideal for hosting guests or providing family members with their own space. Upstairs, the open-concept design invites you in with soaring 10-foot ceilings and grand 8-foot doors, creating an inviting and spacious atmosphere from the moment you step onto the covered front porch. The gourmet kitchen, perfectly positioned at the front of the home, effortlessly flows into the dining and living areas, complete with a stylish linear fireplace—perfect for cozy evenings and entertaining alike. Natural light pours in through large windows, and ...

**Want to Know More
About This Home?**

CONTACT OUR COMMUNITY SALES MANAGER
Call Us @ 470.509.9930



Elevation A

Want to Know More
About This Home?

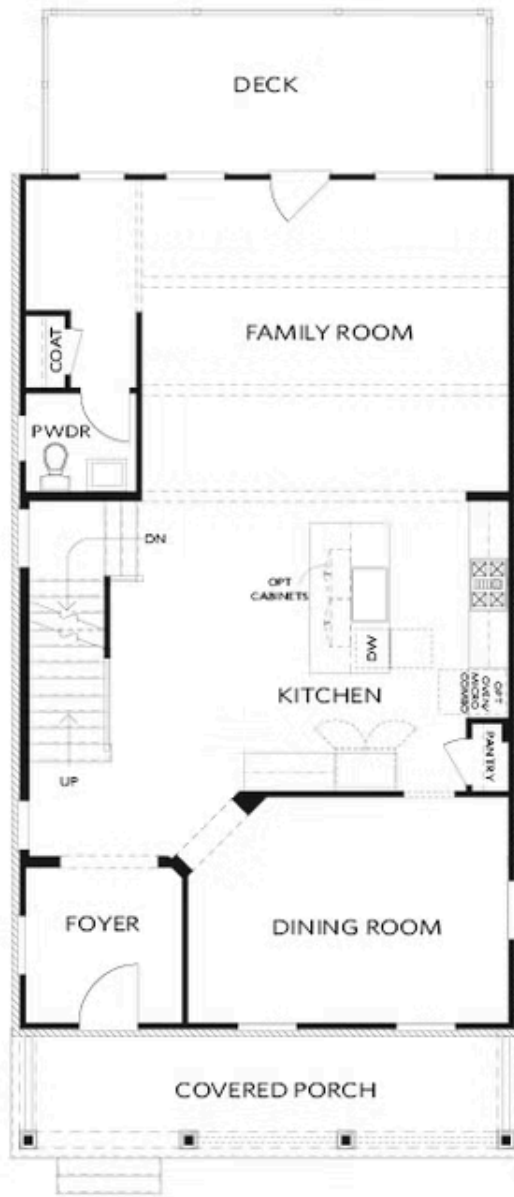
CONTACT OUR COMMUNITY SALES MANAGER
Call Us @ 470.509.9930



Elevation A

Want to Know More
About This Home?

CONTACT OUR COMMUNITY SALES MANAGER
Call Us @ 470.509.9930



Elevation A

Want to Know More
About This Home?

CONTACT OUR COMMUNITY SALES MANAGER
Call Us @ 470.509.9930



Elevation A

Want to Know More
About This Home?

CONTACT OUR COMMUNITY SALES MANAGER
Call Us @ 470.509.9930



OPT Linear Fireplace

OPT Fireplace



OPT Freestanding Tub - Owner's Bath



OPT Screened or Covered Deck



OPT Shower - Terrace Bath



OPT Side Porch - Kitchen Front
 *Per Lot Fit



OPT Side Porch - Kitchen Middle
 *Per Lot Fit

Want to Know More
 About This Home?

CONTACT OUR COMMUNITY SALES MANAGER
 Call Us @ 470.509.9930