




PRICED AT  
**\$651,525**

 2676 Sq Ft

 4 Beds

 3.5 Baths

 2 Car Garage

 3.0 Story

Sizzling Summer Savings!! For a limited time, pick your personalized interior design selections AND RECEIVE \$10,000 IN DESIGN ALLOWANCE FOR CONTRACTS WRITTEN IN AUGUST 2024!! To be built, with a January/February 2025 completion! Come see our newest and much anticipated community, Brackley, located in Cumming, GA, convenient to GA 400 and just around the corner from the City Center! The Brackley is a beautiful community with ample shopping, retail, restaurants, the City Center and so much more! Enjoy the lake? It's just a couple miles away on Buford Dam Road. Come check out our newest floorplan, the Greenville. A bedroom with full bath will be located on the Terrace level. Upstairs, you will find open concept living at its finest: 10-foot ceilings with 8-foot doors. Your guests can enter from the covered wrap around front porch into this gorgeous and spacious home! Your gourmet kitchen is located in the front of home for easy access and open to the dining room and great room! Surrounded by tons of windows, there will be plenty of natural light entering this home. You have the option to pick between our elevated standard finishes or work with our talented design studio to personalize your ...

**Want to Know More  
About This Home?**

CONTACT OUR COMMUNITY SALES MANAGER  
Call Us @ 470.509.9930



Elevation A

Want to Know More  
About This Home?

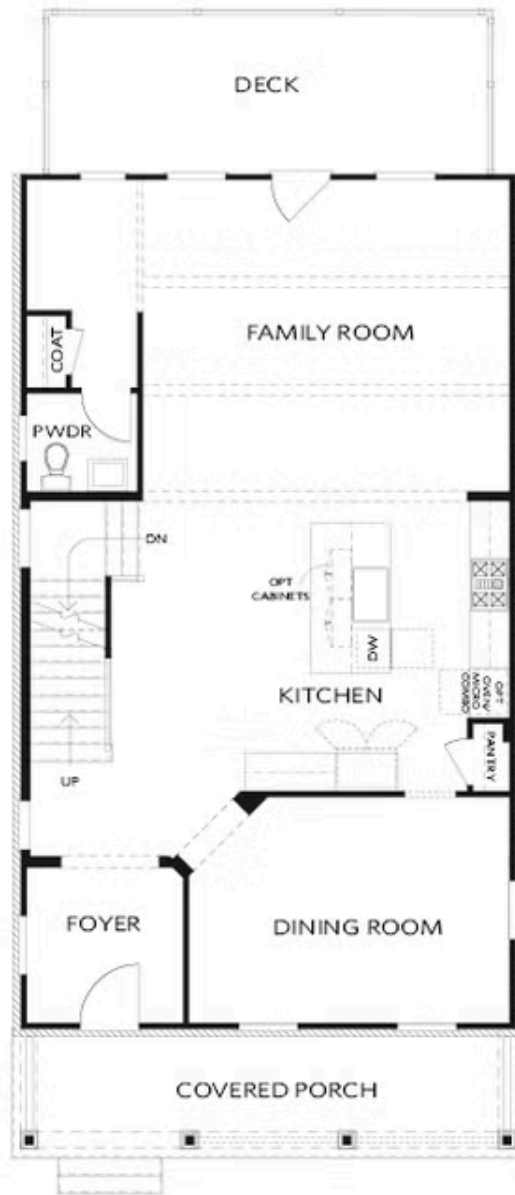
CONTACT OUR COMMUNITY SALES MANAGER  
Call Us @ 470.509.9930



Elevation A

Want to Know More  
About This Home?

CONTACT OUR COMMUNITY SALES MANAGER  
Call Us @ 470.509.9930



Elevation A

Want to Know More  
About This Home?

CONTACT OUR COMMUNITY SALES MANAGER  
Call Us @ 470.509.9930



Elevation A

Want to Know More  
About This Home?

CONTACT OUR COMMUNITY SALES MANAGER  
Call Us @ 470.509.9930



OPT Linear Fireplace

OPT Fireplace



OPT Freestanding Tub - Owner's Bath



OPT Screened or Covered Deck



OPT Shower - Terrace Bath



OPT Side Porch - Kitchen Front  
 \*Per Lot Fit



OPT Side Porch - Kitchen Middle  
 \*Per Lot Fit

Want to Know More  
 About This Home?

CONTACT OUR COMMUNITY SALES MANAGER  
 Call Us @ 470.509.9930