


PRICED AT  
**\$644,125**

 2676 Sq Ft

 4 Beds

 3.5 Baths

 2 Car Garage

 3.0 Story

New Year New Home New You! To be built, with a April/May 2025 completion! Come see our newest and much anticipated community, Brackley, located in Cumming, GA, convenient to GA 400 and just around the corner from the City Center! The Brackley is a beautiful community with ample shopping, retail, restaurants, the City Center and so much more! Enjoy the lake? It's just a couple miles away on Buford Dam Road. Come check out our newest floorplan, the Greenville. A bedroom with full bath will be located on the Terrace level. Upstairs, you will find open concept living at its finest: 10-foot ceilings with 8-foot doors. Your guests can enter from the covered front porch into this gorgeous and spacious home! Your gourmet kitchen is located in the front of home for easy access and open to the dining room and great room! Surrounded by tons of windows, there will be plenty of natural light entering this home. There is a large covered deck perfect for entertaining or just relaxing after a long day. Our HOA maintains all the lawns, so you don't have to worry about it!! The primary suite located upstairs is secluded and private! The primary bathroom ...

**Want to Know More  
About This Home?**

CONTACT OUR COMMUNITY SALES MANAGER  
Call Us @ 470.509.9930



Elevation A

Want to Know More  
About This Home?

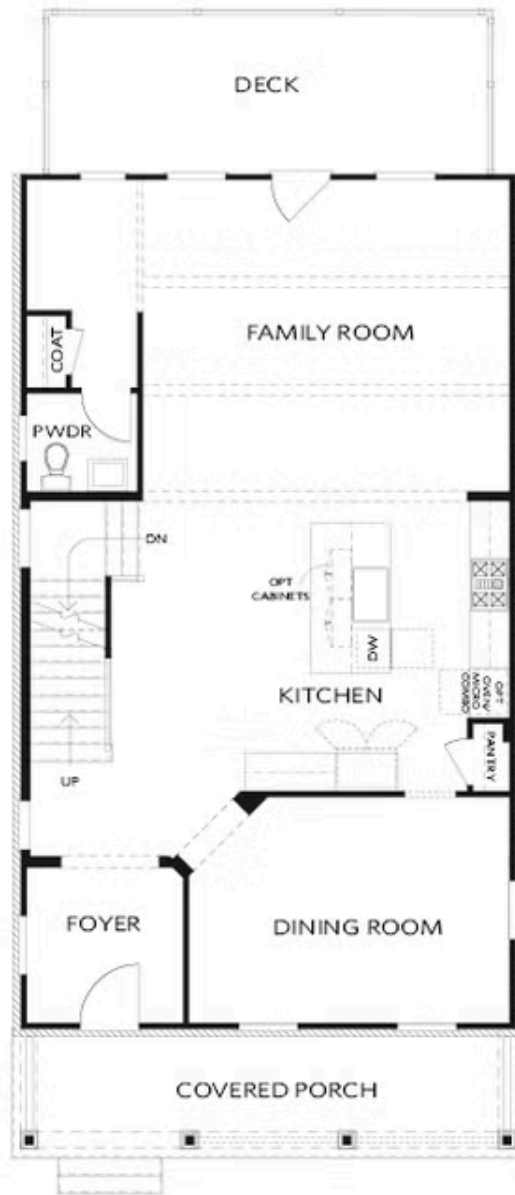
CONTACT OUR COMMUNITY SALES MANAGER  
Call Us @ 470.509.9930



Elevation A

Want to Know More  
About This Home?

CONTACT OUR COMMUNITY SALES MANAGER  
Call Us @ 470.509.9930



Elevation A

Want to Know More  
About This Home?

CONTACT OUR COMMUNITY SALES MANAGER  
Call Us @ 470.509.9930



Elevation A

Want to Know More  
About This Home?

CONTACT OUR COMMUNITY SALES MANAGER  
Call Us @ 470.509.9930



OPT Linear Fireplace

OPT Fireplace



OPT Freestanding Tub - Owner's Bath



OPT Screened or Covered Deck



OPT Shower - Terrace Bath



OPT Side Porch - Kitchen Front  
 \*Per Lot Fit



OPT Side Porch - Kitchen Middle  
 \*Per Lot Fit

Want to Know More  
 About This Home?

CONTACT OUR COMMUNITY SALES MANAGER  
 Call Us @ 470.509.9930