



PRICED AT  
**\$520,400**

 **2004 Sq Ft**

 **3 Beds**

 **3.5 Baths**

 **2 Car Garage**

 **3.0 Story**

**Spring into a New Home!! The Glendale, one of our most popular townhomes is being built here just for you! This spacious 3 story, 3 bedroom and 3.5 bath home is move-in ready! The Brackley hosts a doggie park for our four-legged friends, a fabulous pool and cabana, wide sidewalks, a great green space for meeting your neighbors, a picnic, soccer etc. Located just one mile from GA 400, the newest TPG community offers so much for our homeowners! The Cumming City Center is just around the corner, with loads of restaurants and retail for easy living! And speaking of easy, your HOA will maintain your lawn for you! The Glendale is a well laid out home with 9-foot ceilings located on all 3 floors. The terrace level will have a bedroom/office with a full bath. As you enter the main floor of the home, you will notice there is ample space for all your living needs. Open and bright! This home will have quartz countertops, our beautiful white cabinets, undercounter lighting and soft touch drawers and doors as a standard. The island in this home boasts extra storage as well as a huge sink and ample counter space. Great ...**

**Want to Know More  
About This Home?**

**CONTACT OUR COMMUNITY SALES MANAGER**  
**Call Us @ 470.509.9930**



Elevations B & C Floor Plan Layout

Want to Know More  
About This Home?

CONTACT OUR COMMUNITY SALES MANAGER  
Call Us @ 470.509.9930

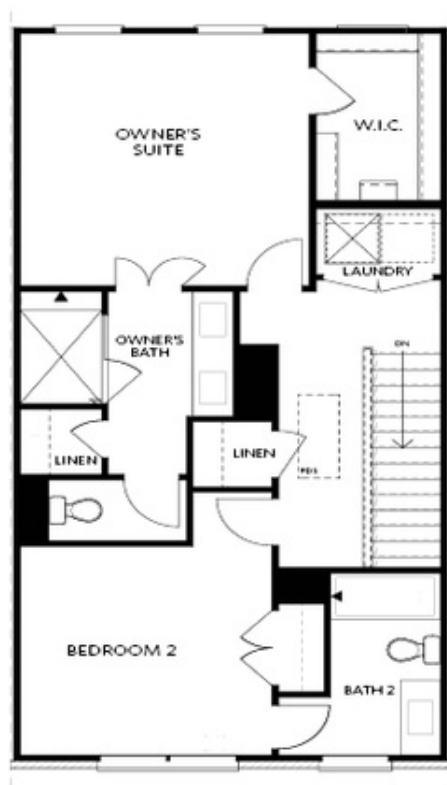


FIRST FLOOR

Elevations B & C Floor Plan Layout

Want to Know More  
About This Home?

CONTACT OUR COMMUNITY SALES MANAGER  
Call Us @ 470.509.9930

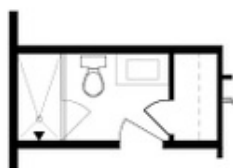


## SECOND FLOOR

Elevations B & C Floor Plan Layout

Want to Know More  
About This Home?

CONTACT OUR COMMUNITY SALES MANAGER  
Call Us @ 470.509.9930



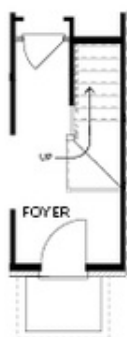
OPT Bath 3 Shower ilo  
Tub/Shower Combo



OPT Sunroom ilo Full Deck



OPT Owner's  
Walk-Through Shower



OPT Stair Landing  
on Terrace



OPT Fireplace



OPT Linear Fireplace



OPT Owner's Shower &  
Tub Combo

## OPTIONS

Want to Know More  
About This Home?

CONTACT OUR COMMUNITY SALES MANAGER  
Call Us @ 470.509.9930