




PRICED AT
\$663,890

 2676 Sq Ft

 4 Beds

 3.5 Baths

 2 Car Garage

 3.0 Story

Sizzling Summer Savings!! QUICK MOVE-IN!!! Come see our newest and much anticipated community, Brackley, located in Cumming, GA, convenient to GA 400 and just around the corner from the City Center! The Brackley is a beautiful community with ample shopping, retail, restaurants, the City Center and so much more! Enjoy the lake? It's just a couple miles away on Buford Dam Road. Come check out our newest floorplan, the Greenville. A bedroom with full bath will be located on the Terrace level. Upstairs, you will find open concept living at its finest: 10-foot ceilings with 8-foot doors. Your guests can enter from the covered front porch into this gorgeous and spacious home! Your gourmet kitchen is located in the front of home for easy access and open to the dining room and great room! Surrounded by tons of windows, there will be plenty of natural light entering this home. The stunning finishes throughout this home will make your heart happy! Hardwoods, quartz countertops, under cabinet lighting, soft touch drawers are just a few examples. All stainless-steel appliances! There is a large deck perfect for entertaining or just relaxing after a long day. Our HOA maintains all the lawns, so you ...

**Want to Know More
About This Home?**

CONTACT OUR COMMUNITY SALES MANAGER
Call Us @ 470.509.9930



Elevation A

Want to Know More
About This Home?

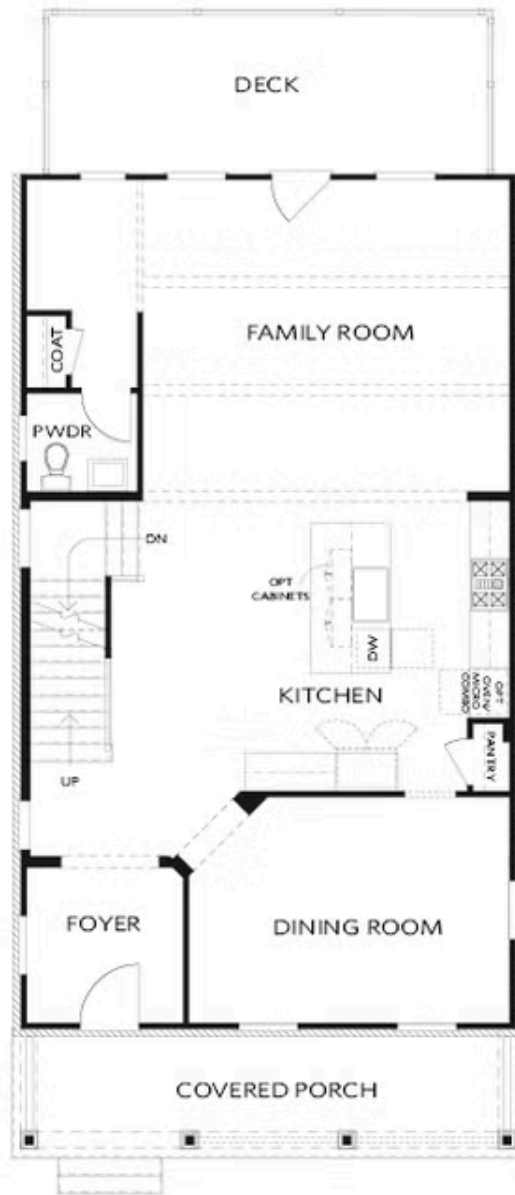
CONTACT OUR COMMUNITY SALES MANAGER
Call Us @ 470.509.9930



Elevation A

Want to Know More
About This Home?

CONTACT OUR COMMUNITY SALES MANAGER
Call Us @ 470.509.9930



Elevation A

Want to Know More
About This Home?

CONTACT OUR COMMUNITY SALES MANAGER
Call Us @ 470.509.9930



Elevation A

Want to Know More
About This Home?

CONTACT OUR COMMUNITY SALES MANAGER
Call Us @ 470.509.9930



OPT Linear Fireplace

OPT Fireplace



OPT Freestanding Tub - Owner's Bath



OPT Screened or Covered Deck



OPT Shower - Terrace Bath



OPT Side Porch - Kitchen Front
 *Per Lot Fit



OPT Side Porch - Kitchen Middle
 *Per Lot Fit

Want to Know More
 About This Home?

CONTACT OUR COMMUNITY SALES MANAGER
 Call Us @ 470.509.9930