




PRICED AT
\$663,020

 2676 Sq Ft

 4 Beds

 3.5 Baths

 2 Car Garage

 3.0 Story

Fall Into Savings with \$20k. Personalize Your Space with Your Style - use it toward low rates, upgrades, appliances, closing costs & more. Ends September 30, 2025. Ask us about our preferred lenders—offering up to \$2,500 or rate buy-down options to help you save even more. Ask us about our preferred lenders—offering up to \$2,500 or rate buy-down options to help you save even more. Welcome to Brackley—Cumming, Georgia's most exciting and highly anticipated new neighborhood! This spacious corner home is East facing and will be ready for you to move in November/December to start living your best life. Perfectly positioned near GA 400 and just minutes from the bustling City Center, Brackley offers unbeatable convenience with top-tier shopping, dining, and entertainment right around the corner. Love the outdoors? You're only a short drive from Lake Lanier via scenic Buford Dam Road. Step inside the stunning Greenville floor plan and experience modern living redefined. A private bedroom and full bath on the terrace level is ideal for guests or a home office. The main level wows with 10-foot ceilings, 8-foot doors, and an open-concept design that feels both airy and inviting. Enter through the charming covered front porch and you're ...

**Want to Know More
About This Home?**

CONTACT OUR COMMUNITY SALES MANAGER
Call Us @ 470.509.9930



Elevation A

Want to Know More
About This Home?

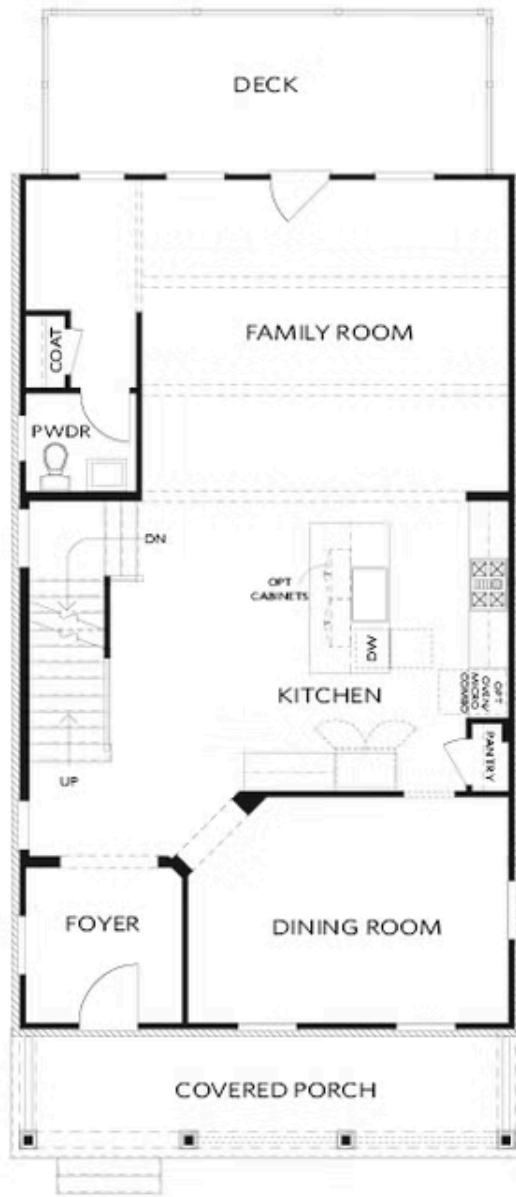
CONTACT OUR COMMUNITY SALES MANAGER
Call Us @ 470.509.9930



Elevation A

Want to Know More
About This Home?

CONTACT OUR COMMUNITY SALES MANAGER
Call Us @ 470.509.9930



Elevation A

Want to Know More
About This Home?

CONTACT OUR COMMUNITY SALES MANAGER
Call Us @ 470.509.9930



Elevation A

Want to Know More
About This Home?

CONTACT OUR COMMUNITY SALES MANAGER
Call Us @ 470.509.9930



OPT Linear Fireplace

OPT Fireplace



OPT Freestanding Tub - Owner's Bath



OPT Screened or Covered Deck



OPT Shower - Terrace Bath



OPT Side Porch - Kitchen Front
 *Per Lot Fit



OPT Side Porch - Kitchen Middle
 *Per Lot Fit

Want to Know More
 About This Home?

CONTACT OUR COMMUNITY SALES MANAGER
 Call Us @ 470.509.9930