


PRICED AT  
**\$669,210**

 2676 Sq Ft

 4 Beds

 3.5 Baths

 2 Car Garage

 3.0 Story

Season of Savings- Build your Savings and Unwrap the Joy of a New Home with \$30,000 Promotion! Promotions can be applied towards a price reduction, upgraded appliances, closing cost, Rate-Buy down and more- giving you the flexibility to save where it matters most. Ends November 30, 2025. Discover the The Greenville by The Providence Group. This home is MOVE IN READY. Experience Exceptional Living at Brackley in Cumming, GA! Discover the perfect blend of privacy, comfort, and convenience in this spacious homesite nestled on a wooded, East-facing lot, ideal for soaking in morning light and enjoying serene views. Welcome to Brackley, our newest and most anticipated community in the heart of Cumming. Just minutes from GA 400 and the City Center, Brackley offers the best of both worlds: small-town charm with big-city amenities. Whether you're in the mood to shop, dine, explore, or unwind by the water, you're covered—Lake Lanier is just a few miles away via Buford Dam Road. Step inside one of our most sought-after floor plans: The Greenville. This thoughtfully designed home features a bedroom and full bath on the terrace level, perfect for guests or a private office. The main floor showcases open-concept living at its ...

**Want to Know More  
About This Home?**

CONTACT OUR COMMUNITY SALES MANAGER  
Call Us @ 470.509.9930



Elevation A

Want to Know More  
About This Home?

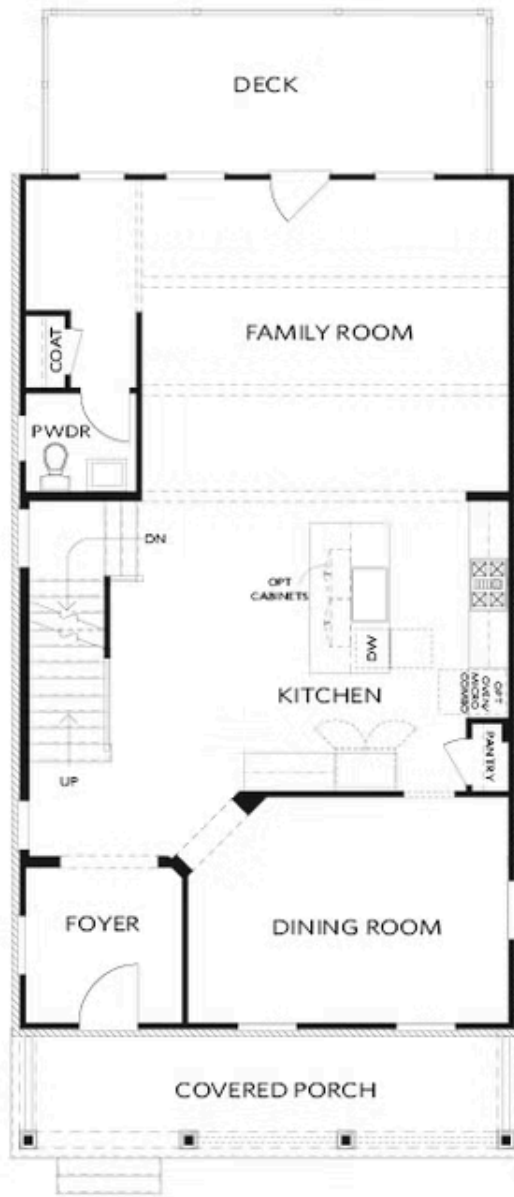
CONTACT OUR COMMUNITY SALES MANAGER  
Call Us @ 470.509.9930



Elevation A

Want to Know More  
About This Home?

CONTACT OUR COMMUNITY SALES MANAGER  
Call Us @ 470.509.9930



Elevation A

Want to Know More  
About This Home?

CONTACT OUR COMMUNITY SALES MANAGER  
Call Us @ 470.509.9930



Elevation A

Want to Know More  
About This Home?

CONTACT OUR COMMUNITY SALES MANAGER  
Call Us @ 470.509.9930



OPT Linear Fireplace

OPT Fireplace



OPT Freestanding Tub - Owner's Bath



OPT Screened or Covered Deck



OPT Shower - Terrace Bath



OPT Side Porch - Kitchen Front  
 \*Per Lot Fit



OPT Side Porch - Kitchen Middle  
 \*Per Lot Fit

Want to Know More  
 About This Home?

CONTACT OUR COMMUNITY SALES MANAGER  
 Call Us @ 470.509.9930