

PRICED AT  
**\$558,200**

 1890 Sq Ft

 3 Beds

 3.5 Baths

 2 Car Garage

 3.0 Story

Spring into a New Home with \$15,000 Anyway You Want for Contracts this month! Market Square transcends the concept of mere residence; it embodies a vibrant lifestyle—a harmonious blend of thoughtful design and unparalleled convenience. \*Energy Certified Home\* Embracing The Providence Groups' Warm Wheat Design Collection, the Glendale Plan End Unit spans three levels, offering 3 bedrooms and 3.5 bathrooms across 1890 sq. ft. Venture to the terrace level to discover a welcoming bedroom accompanied by a luxurious ensuite—an ideal space for guests, a home office, or a personal gym sanctuary. On the main level, an elegant fusion of the family room, dining area, and chef-style kitchen awaits, featuring 42" cabinets and quartz countertops. Stainless-steel GE appliances, a chic tile backsplash, and modern lighting complete this culinary haven. Ascend to the third level to unveil a spacious Primary Suite boasting a walk-in closet and a contemporary double-vanity bathroom, Soaking Tub plus a walk in Shower. Additionally, an extra bedroom with its private bathroom and a convenient laundry room graces this top-level sanctuary. Explore the charm of urban living nestled within the lively Market Square District of Sawnee Village. Surrounded by an enticing mix of retail and dining venues just a ...

Want to Know More  
About This Home?

CONTACT OUR COMMUNITY SALES MANAGER  
Call Us @ 678.372.1644



TERRACE  
Elevations B & C Floor Plan Layout

Want to Know More  
About This Home?

CONTACT OUR COMMUNITY SALES MANAGER  
Call Us @ 678.372.1644



TERRACE

Elevations B & C Floor Plan Layout

Want to Know More  
About This Home?

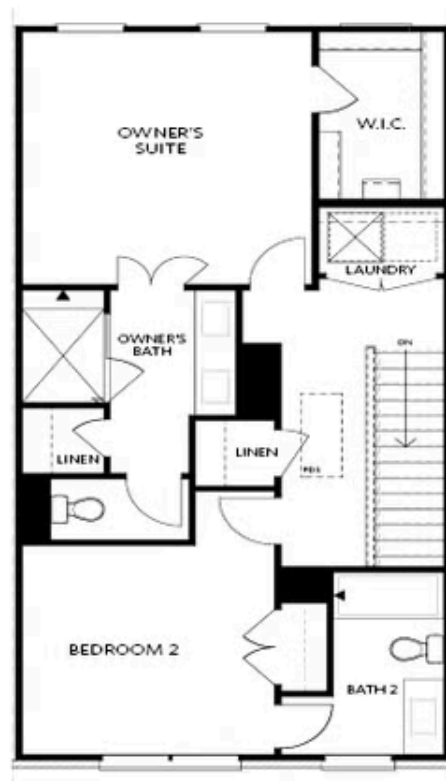
CONTACT OUR COMMUNITY SALES MANAGER  
Call Us @ 678.372.1644



Elevations B & C Floor Plan Layout

Want to Know More  
About This Home?

CONTACT OUR COMMUNITY SALES MANAGER  
Call Us @ 678.372.1644

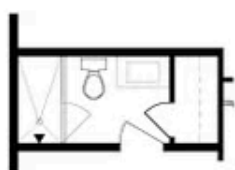


## SECOND FLOOR

Elevations B & C Floor Plan Layout

Want to Know More  
About This Home?

CONTACT OUR COMMUNITY SALES MANAGER  
Call Us @ 678.372.1644



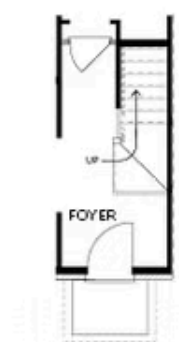
OPT Bath 3 Shower & Tub/Shower Combo



OPT Sunroom & Full Deck



OPT Owner's Walk-Through Shower



OPT Stair Landing on Terrace



OPT Fireplace



OPT Linear Fireplace

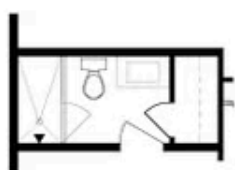


OPT Owner's Shower & Tub Combo

## OPTIONS

Want to Know More  
About This Home?

CONTACT OUR COMMUNITY SALES MANAGER  
Call Us @ 678.372.1644



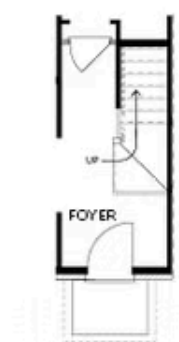
OPT Bath 3 Shower & Tub/Shower Combo



OPT Sunroom & Full Deck



OPT Owner's Walk-Through Shower



OPT Stair Landing on Terrace



OPT Fireplace



OPT Linear Fireplace



OPT Owner's Shower & Tub Combo

## OPTIONS

Want to Know More  
About This Home?

CONTACT OUR COMMUNITY SALES MANAGER  
Call Us @ 678.372.1644