



PRICED AT
\$571,450

 1903 Sq Ft

 3 Beds

 3.5 Baths

 2 Car Garage

 3.0 Story

Fall into Savings with \$10,000 Any Way You Want for Contracts Written in November! Enjoy an Additional \$5,000 if closed in December for a total of \$15,000!! Explore the charm of urban living nestled within the lively Market Square District of Sawnee Village. Surrounded by an enticing mix of retail and dining venues just a stone's throw away, the allure of convenience and adventure awaits. Whether you're taking your first step into homeownership or seeking the perfect downsizing solution, Market Square beckons with options to suit every lifestyle. Located in the heart of Cumming, GA, this community unveils a collection of impeccably designed townhomes tailored to your needs. Embracing The Providence Groups' Cool Stone Design Collection, the Glendale Plan spans three levels, offering 3 bedrooms and 3.5 bathrooms across 1903 sq. ft. Venture to the terrace level to discover a welcoming bedroom accompanied by a luxurious ensuite—an ideal space for guests, a home office, or a personal gym sanctuary. On the main level, an elegant fusion of the family room, dining area, and chef-style kitchen awaits, featuring 42" cabinets and quartz countertops. Stainless-steel GE appliances, a chic tile backsplash, and modern lighting complete this culinary haven. Ascend to the third ...

**Want to Know More
About This Home?**

CONTACT OUR COMMUNITY SALES MANAGER
Call Us @ 678.372.1644



TERRACE

Elevations B & C Floor Plan Layout

Want to Know More
About This Home?

CONTACT OUR COMMUNITY SALES MANAGER
Call Us @ 678.372.1644



TERRACE

Elevations B & C Floor Plan Layout

Want to Know More
About This Home?

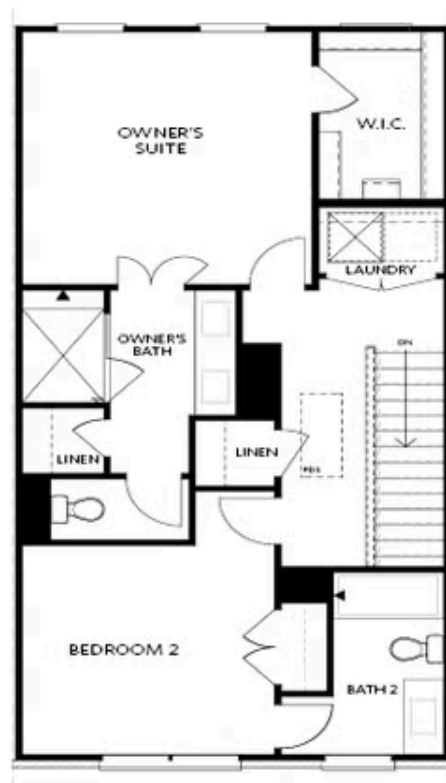
CONTACT OUR COMMUNITY SALES MANAGER
Call Us @ 678.372.1644



Elevations B & C Floor Plan Layout

Want to Know More
About This Home?

CONTACT OUR COMMUNITY SALES MANAGER
Call Us @ 678.372.1644

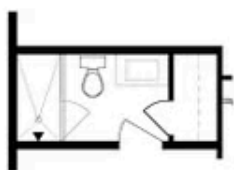


SECOND FLOOR

Elevations B & C Floor Plan Layout

Want to Know More
About This Home?

CONTACT OUR COMMUNITY SALES MANAGER
Call Us @ 678.372.1644



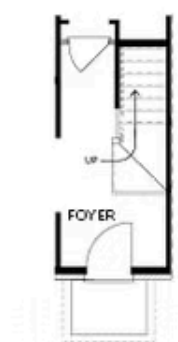
OPT Bath 3 Shower ilo
Tub/Shower Combo



OPT Sunroom ilo Full Deck



OPT Owner's
Walk-Through Shower



OPT Stair Landing
on Terrace



OPT Fireplace



OPT Linear Fireplace

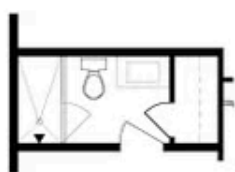


OPT Owner's Shower &
Tub Combo

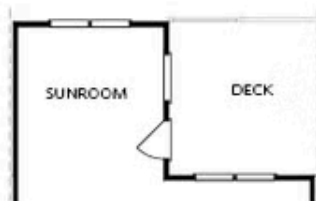
OPTIONS

Want to Know More
About This Home?

CONTACT OUR COMMUNITY SALES MANAGER
Call Us @ 678.372.1644



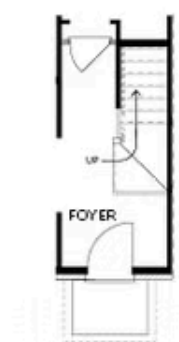
OPT Bath 3 Shower ilo
Tub/Shower Combo



OPT Sunroom ilo Full Deck



OPT Owner's
Walk-Through Shower



OPT Stair Landing
on Terrace



OPT Fireplace



OPT Linear Fireplace



OPT Owner's Shower &
Tub Combo

OPTIONS

Want to Know More
About This Home?

CONTACT OUR COMMUNITY SALES MANAGER
Call Us @ 678.372.1644