



PRICED AT  
**\$576,040**

 1991 Sq Ft

 3 Beds

 3.5 Baths

 2 Car Garage

 3.0 Story

\*Spring into a New Home with \$15,000 ANYWAY YOU WANT for March Contracts!\* Embrace the pulse of urban living in Sawnee Village's lively Market Square District. With an eclectic blend of retail and dining options mere steps away, convenience and vibrancy abound. Market Square caters to both first-time homebuyers and those seeking quality downsizing. Nestled in the heart of Cumming, GA, this vibrant community offers an array of stylish townhomes that cater to your every need. Designed with The Providence Groups' Cool Linen Design Collection, Home Site 52 features an End Unit with Blinds, Refrigerator, & Alarm already included! The Glendale Plan features 3 bedrooms and 3.5 bathrooms across 3 levels at 1991 sq. ft. Entering on the terrace level, this plan boasts a gracious bedroom complemented by a lavish ensuite—a versatile space ideal for guests, a home office, or in-home gym. Ascend to the main level, where an open-concept layout seamlessly merges the family room and dining area with a chef-style kitchen, adorned with stunning 42" white cabinets and striking Calacatta Ultra quartz countertops atop a massive island. Stainless-steel GE appliances, a tile backsplash, and modern lighting round out this dreamy kitchen. A sun-drenched sunroom leads out to an ...

**Want to Know More  
About This Home?**

CONTACT OUR COMMUNITY SALES MANAGER  
Call Us @ 678.372.1644



TERRACE

Elevations B & C Floor Plan Layout

Want to Know More  
About This Home?

CONTACT OUR COMMUNITY SALES MANAGER  
Call Us @ 678.372.1644

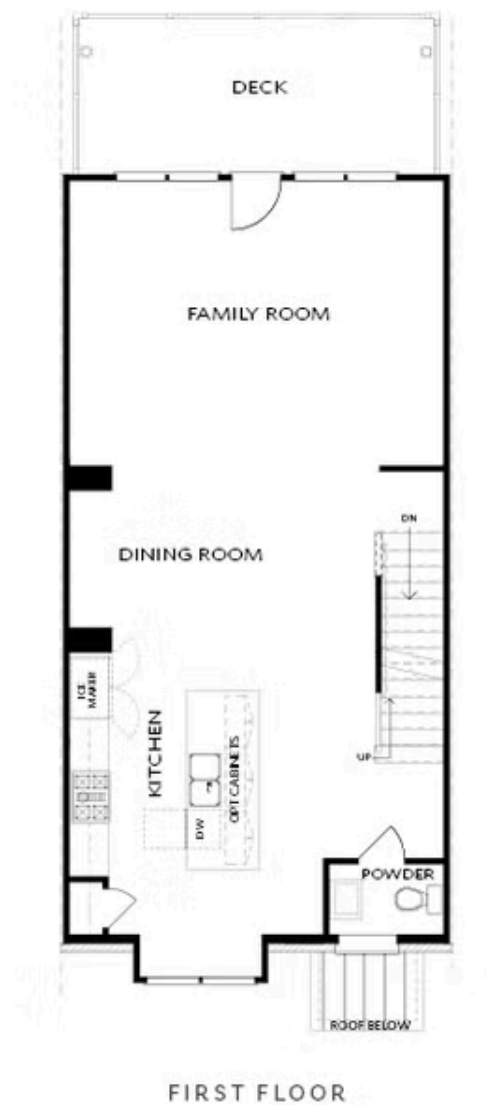


TERRACE

Elevations B & C Floor Plan Layout

Want to Know More  
About This Home?

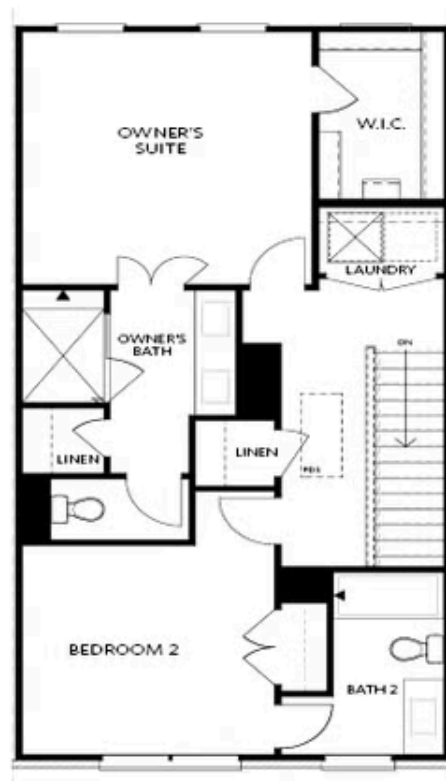
CONTACT OUR COMMUNITY SALES MANAGER  
Call Us @ 678.372.1644



Elevations B & C Floor Plan Layout

Want to Know More  
About This Home?

CONTACT OUR COMMUNITY SALES MANAGER  
Call Us @ 678.372.1644

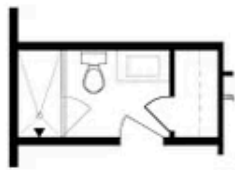


## SECOND FLOOR

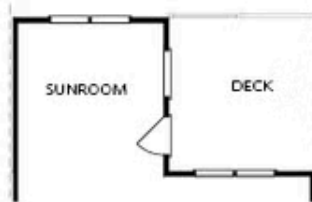
Elevations B & C Floor Plan Layout

Want to Know More  
About This Home?

CONTACT OUR COMMUNITY SALES MANAGER  
Call Us @ 678.372.1644



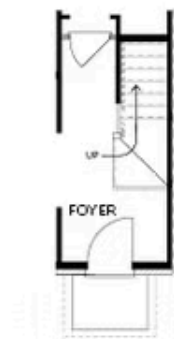
OPT Bath 3 Shower & Tub/Shower Combo



OPT Sunroom & Full Deck



OPT Owner's Walk-Through Shower



OPT Stair Landing on Terrace



OPT Fireplace



OPT Linear Fireplace

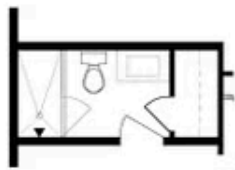


OPT Owner's Shower & Tub Combo

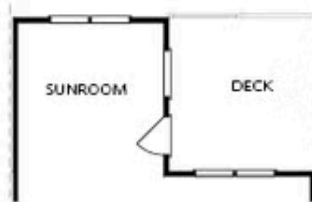
## OPTIONS

Want to Know More  
About This Home?

CONTACT OUR COMMUNITY SALES MANAGER  
Call Us @ 678.372.1644



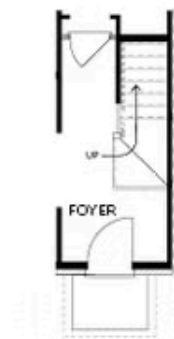
OPT Bath 3 Shower & Tub/Shower Combo



OPT Sunroom & Full Deck



OPT Owner's Walk-Through Shower



OPT Stair Landing on Terrace



OPT Fireplace



OPT Linear Fireplace



OPT Owner's Shower & Tub Combo

## OPTIONS

Want to Know More  
About This Home?

CONTACT OUR COMMUNITY SALES MANAGER  
Call Us @ 678.372.1644