



PRICED FROM
\$515,400

 1,903 Sq Ft

 3 Beds

 3.5 Baths

 2 Car Garage

 3.0 Story

- Spacious Three Story Design with Open Main Level Layout
- Gourmet Kitchen with Island overlooking Dining and Family Room
- Owner's Suite and Private Bath with Dual Vanities and Over Size Walk-In Closet on Upper Level
- A Secondary Bedroom and Laundry on Upper Level
- Two Car Garage

[Read More Online](#)

Available Elevations





TERRACE

Elevations B & C Floor Plan Layout

Want to Know More
About This Home?

CONTACT OUR COMMUNITY SALES MANAGER
Call Us @ 678.372.1644



TERRACE

Elevations B & C Floor Plan Layout

Want to Know More
About This Home?

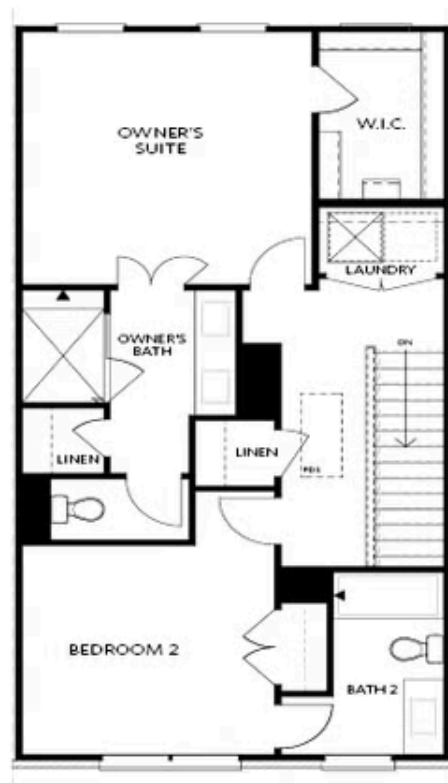
CONTACT OUR COMMUNITY SALES MANAGER
Call Us @ 678.372.1644



Elevations B & C Floor Plan Layout

Want to Know More
About This Home?

CONTACT OUR COMMUNITY SALES MANAGER
Call Us @ 678.372.1644

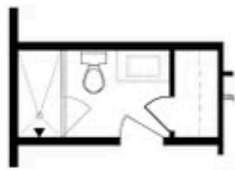


SECOND FLOOR

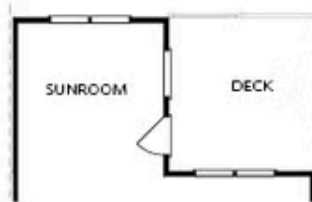
Elevations B & C Floor Plan Layout

Want to Know More
About This Home?

CONTACT OUR COMMUNITY SALES MANAGER
Call Us @ 678.372.1644



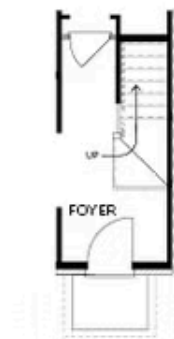
OPT Bath 3 Shower & Tub/Shower Combo



OPT Sunroom & Full Deck



OPT Owner's Walk-Through Shower



OPT Stair Landing on Terrace



OPT Fireplace



OPT Linear Fireplace

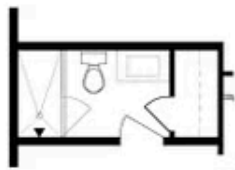


OPT Owner's Shower & Tub Combo

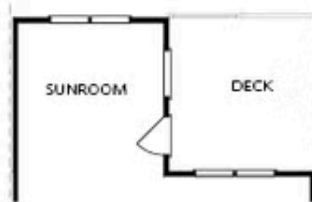
OPTIONS

Want to Know More
About This Home?

CONTACT OUR COMMUNITY SALES MANAGER
Call Us @ 678.372.1644



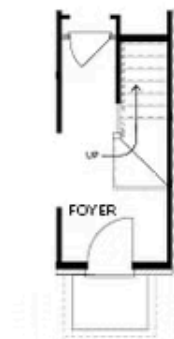
OPT Bath 3 Shower & Tub/Shower Combo



OPT Sunroom & Full Deck



OPT Owner's Walk-Through Shower



OPT Stair Landing on Terrace



OPT Fireplace



OPT Linear Fireplace



OPT Owner's Shower & Tub Combo

OPTIONS

Want to Know More
About This Home?

CONTACT OUR COMMUNITY SALES MANAGER
Call Us @ 678.372.1644