



PRICED AT  
**\$704,820**

 **2816 Sq Ft**

 **5 Beds**

 **4.0 Baths**

 **2 Car Garage**

 **2.0 Story**

**Welcome to the Palisades at Sawnee Village. Introducing the Carter Floorplan, a stunning modern farmhouse residence in an exclusive gated entrance community, positioned high to offer spectacular views. This expansive home feature 3 levels. Including 5 bedrooms and 4 bathrooms, with thoughtful design elements throughout. The main level boasts a convenient bedroom with a full bathroom, an inviting open family room seamlessly connecting to a gourmet kitchen equipped stainless steel appliances. The foyer includes a practical drop zone for shoes and bags, while 10-foot ceilings and 8-foot doors create a sense of grandeur. On the second level, you'll find the luxurious owner's suite with a 10-foot tray ceiling, providing a peaceful retreat. The media room is also located on this floor, perfect for entertainment and relaxation. The third level includes an additional bedroom and bathroom. Enjoy outdoor living with a covered patio, and take advantage of the community amenities, including a pool, park, and playground. Located just a few miles from Interstate 400, 15 minutes from Lake Lanier, and less than 2 miles from Cumming City Center with its boutique shopping and unique restaurants, this home combines modern comforts with prime location benefits. opportunity to select your own design options, ...**

**Want to Know More  
About This Home?**

**CONTACT OUR COMMUNITY SALES MANAGER**



FIRST FLOOR

Elevation C & D

Want to Know More  
About This Home?

CONTACT OUR COMMUNITY SALES MANAGER



SECOND FLOOR

Elevation C

Want to Know More  
About This Home?

CONTACT OUR COMMUNITY SALES MANAGER

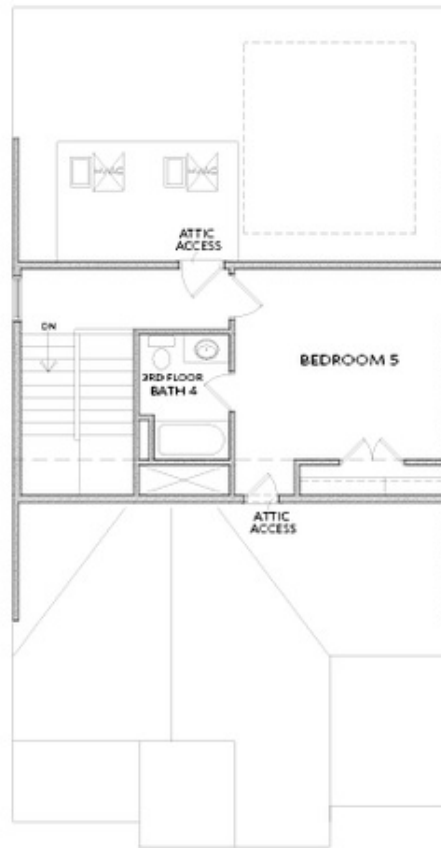


SECOND FLOOR

Elevation D

Want to Know More  
About This Home?

CONTACT OUR COMMUNITY SALES MANAGER

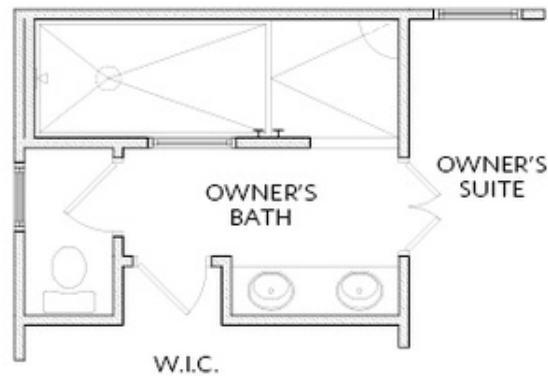


OPT THIRD FLOOR

Elevation C & D

Want to Know More  
About This Home?

CONTACT OUR COMMUNITY SALES MANAGER



OPT Owner's Walk-In Shower

OPTIONS

Want to Know More  
About This Home?

CONTACT OUR COMMUNITY SALES MANAGER