



PRICED AT
\$699,350

 2816 Sq Ft

 5 Beds

 4.0 Baths

 2 Car Garage

 2.0 Story

Welcome to the Palisades at Sawnee Village. Introducing the Carter Floorplan, a stunning modern farmhouse residence in an exclusive gated entrance community, positioned high to offer spectacular views. This expansive home features 3 levels. Including 5 bedrooms and 4 bathrooms, with thoughtful design elements throughout. The main level boasts a convenient bedroom with a full bathroom, an inviting open family room seamlessly connecting to a gourmet kitchen equipped with stainless steel appliances. The foyer includes a practical drop zone for shoes and bags, while 10-foot ceilings and 8-foot doors create a sense of grandeur. On the second level, you'll find the luxurious owner's suite with a 10-foot tray ceiling, providing a peaceful retreat. The media room is also located on this floor, perfect for entertainment and relaxation. The third level includes an additional bedroom and bathroom. Enjoy outdoor living with a covered patio, and take advantage of the community amenities, including a pool, park, and playground. Located just a few miles from Interstate 400, 15 minutes from Lake Lanier, and less than 2 miles from Cumming City Center with its boutique shopping and unique restaurants, this home combines modern comforts with prime location benefits. Opportunity to select your own design options,

**Want to Know More
About This Home?**

CONTACT OUR COMMUNITY SALES MANAGER

NONE

Call Us @ 470.456.9551



FIRST FLOOR

Elevation C

**Want to Know More
About This Home?**

CONTACT OUR COMMUNITY SALES MANAGER

NONE

Call Us @ 470.456.9551



SECOND FLOOR

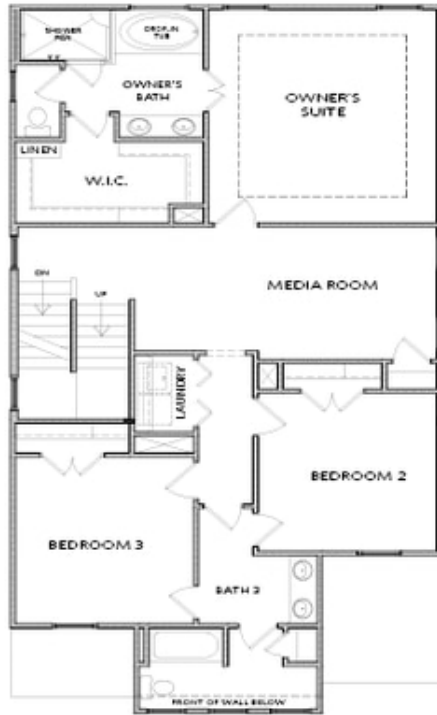
Elevation C

Want to Know More
About This Home?

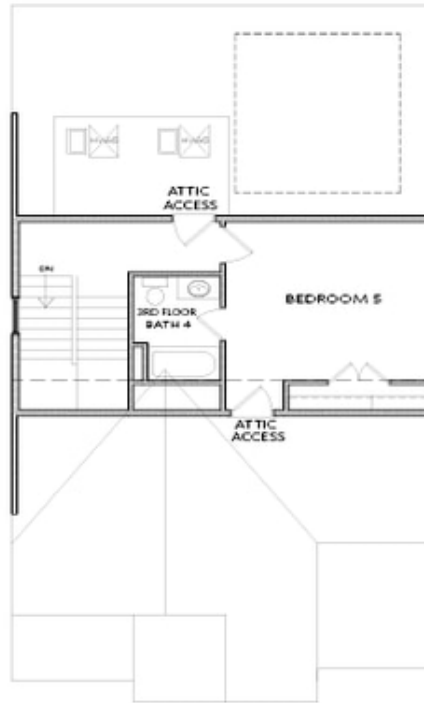
CONTACT OUR COMMUNITY SALES MANAGER

NONE

Call Us @ 470.456.9551



2nd Floor Layout when 3rd Floor Selected



OPT 3rd Floor w/ Bedroom 5 & Bath 4

OPTIONAL THIRD FLOOR

Elevation C

**Want to Know More
 About This Home?**

CONTACT OUR COMMUNITY SALES MANAGER

NONE

Call Us @ 470.456.9551