



PRICED FROM
\$624,900

 **2,433 Sq Ft**

 **3 Beds**

 **2.5 Baths**

 **2 Car Garage**

 **2.0 Story**

- **Classic 2-Story Single-Family Home**
- **Open Concept with a view from the Kitchen to the Dining to the Family Room**
- **L-Shaped Kitchen with seating for 3 at the Large Kitchen Island**
- **Sliding Glass Door Leads to a Covered Patio off the Dining Room**
- **A Mudroom off the Garage is a perfect place for Keys and Shoes**
- **Second Floor Features the Owner's Suite, a Loft and Two Secondary Bedrooms**

[Read More Online](#)

Available Elevations



Elevation C



Elevation D



FIRST FLOOR

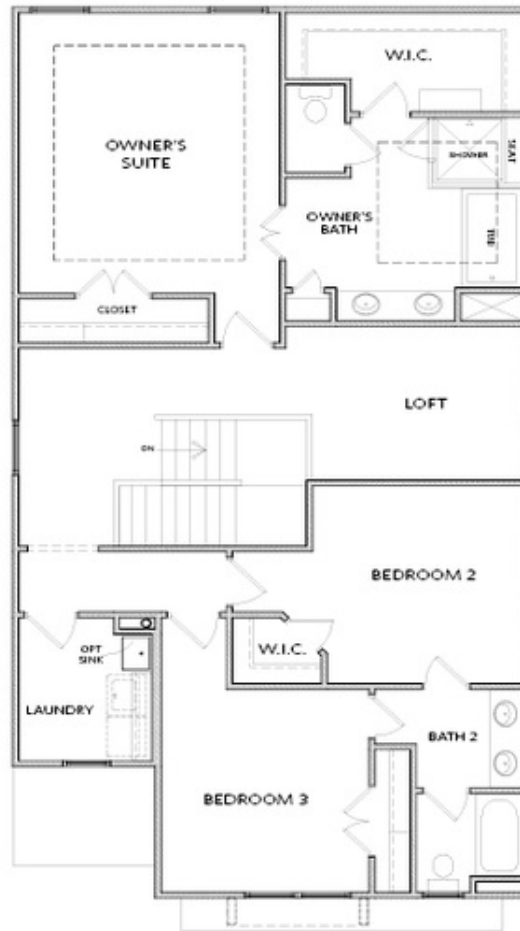
Elevation D

Want to Know More
About This Home?

CONTACT OUR COMMUNITY SALES MANAGER

NONE

Call Us @ 470.456.9551



SECOND FLOOR

Elevation D

Want to Know More
About This Home?

CONTACT OUR COMMUNITY SALES MANAGER

NONE

Call Us @ 470.456.9551