



PRICED FROM
\$642,900

 2,518 - 2,831 Sq Ft

 4 - 5 Beds

 3 - 4 Baths

 2 Car Garage

 2.0 - 3.0 Story

- Classic 2-Story Single-Family Home with Optional 3rd Story
- Open Concept with a view from the Kitchen to the Dining to the Family Room
- L-Shaped Kitchen with seating for 3 at the Large Kitchen Island
- Sliding Glass Door Opens to a Patio off the Family Room - Brings the Outdoors In
- Optional Covered Patio off the Family Room
- Second Floor Features the Owner's Suite, a Loft and Two Secondary Bedrooms
- Optional 3rd Floor Adds a 5th Bedroom and Full Bath

[Read More Online](#)

Available Elevations



Elevation C



Elevation D



FIRST FLOOR

Elevation C

**Want to Know More
 About This Home?**

CONTACT OUR COMMUNITY SALES MANAGER

NONE

Call Us @ 470.456.9551



SECOND FLOOR

Elevation C

**Want to Know More
About This Home?**

CONTACT OUR COMMUNITY SALES MANAGER

NONE

Call Us @ 470.456.9551



When 3rd Floor is Selected



OPT Bath 4 - NO 3rd Floor Available

SECOND FLOOR OPTIONS

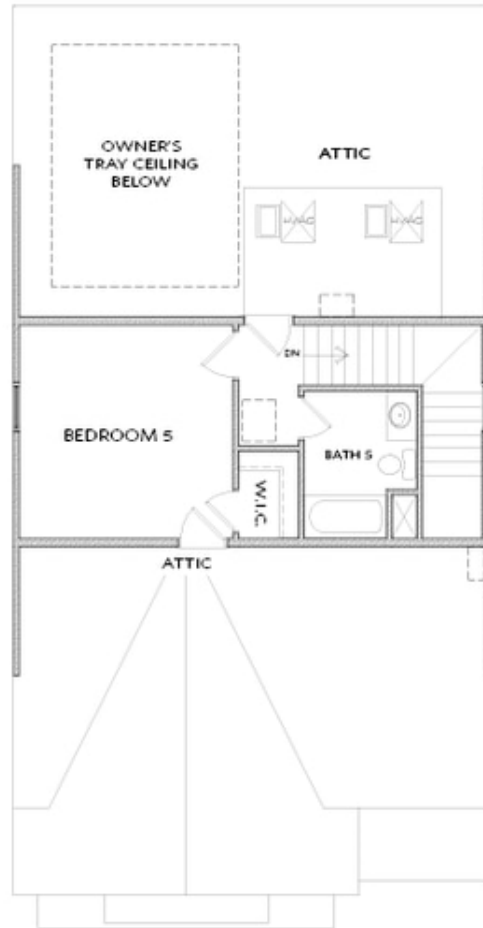
Elevation C

**Want to Know More
 About This Home?**

CONTACT OUR COMMUNITY SALES MANAGER

NONE

Call Us @ 470.456.9551



OPT THIRD FLOOR

Elevation C

**Want to Know More
About This Home?**

CONTACT OUR COMMUNITY SALES MANAGER

NONE

Call Us @ 470.456.9551