



PRICED AT
\$647,465

 **2433 Sq Ft**

 **3 Beds**

 **2.5 Baths**

 **2 Car Garage**

 **2.0 Story**

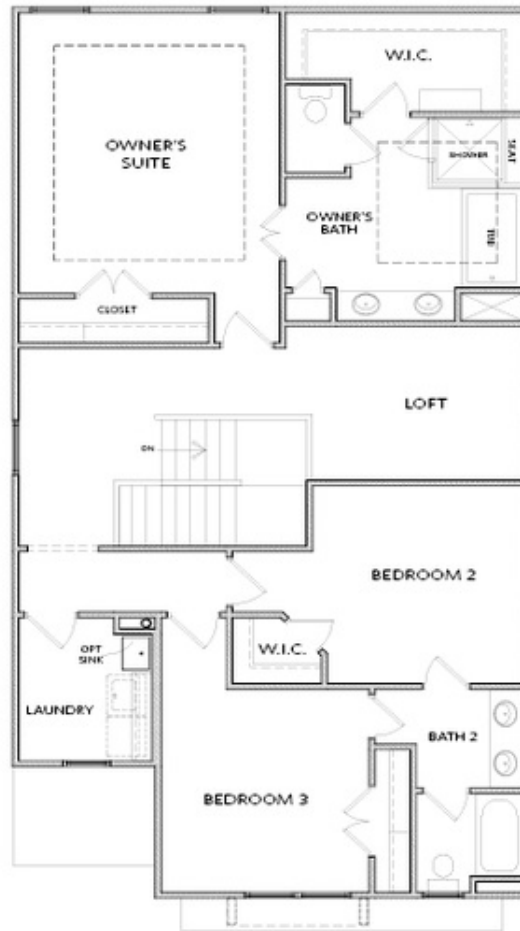
Spring into a New Home! \$30,000 promotion is reflected in the price and has been applied to the listing through March. Introducing the Cantrell plan on Lot 12 - a stunning new construction home featuring a spacious and open layout. This 3-bedroom, 2.5-bathroom home offers high 10-foot ceilings on the main level, an inviting fireplace, and stylish open railings on the stairs. Enjoy the convenience of an office nook on the main floor, perfect for working from home, plus a versatile flex space on the second floor. The large upstairs laundry room is ideally located near all the bedrooms. This space features a stylish, cool-toned white design created by our interior design team, showcasing white kitchen cabinets paired with a black island, along with shiplap trim and a stained mantel on the fireplace. Located in a charming farmhouse-style community with breathtaking views of Sawnee Mountain, this home includes access to amazing amenities, such as a pool, cabana, park, playground, and is gated for added privacy. Inside, the design is equally impressive with quartz countertops, white cabinetry, and upgraded hardsurface flooring in the owner's suite and flex space. Don't miss out - come see us today!

**Want to Know More
About This Home?**

CONTACT OUR COMMUNITY SALES MANAGER

NONE

Call Us @ 470.456.9551



SECOND FLOOR

Elevation D

Want to Know More
About This Home?

CONTACT OUR COMMUNITY SALES MANAGER

NONE

Call Us @ 470.456.9551



FIRST FLOOR

Elevation D

Want to Know More
About This Home?

CONTACT OUR COMMUNITY SALES MANAGER

NONE

Call Us @ 470.456.9551