



PRICED AT
\$655,270

 **2445 Sq Ft**

 **4 Beds**

 **3.0 Baths**

 **2 Car Garage**

 **2.0 Story**

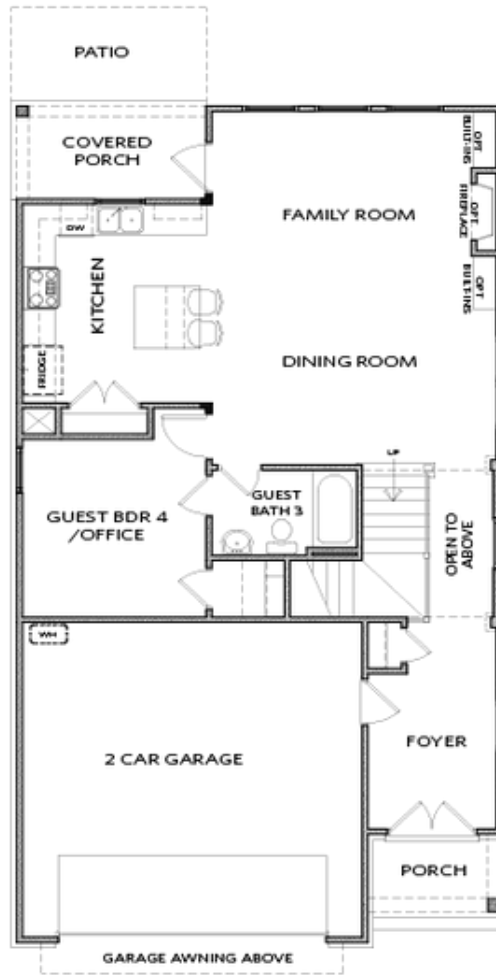
Spring into a New Home... \$40,000 incentive for a contract written on this home in the month of April! Reflected off price on this listing. Introducing the Castleberry C plan on Lot 13 - a stunning new construction home featuring a spacious, open floor plan. This 4-bedroom, 3-bathroom home offers impressive 10-foot ceilings, with a guest bedroom and full bath with a standing shower conveniently located on the main level. The second floor includes a loft area and a generously sized laundry room, perfectly situated near the bedrooms. The interior is highlighted by sleek white kitchen cabinets and elegant quartz countertops. To enhance the buyer's experience, we've included a fully fenced backyard and blinds throughout the home. The garage is equipped with an electric car charger, and both the main level guest bedroom and the upstairs loft feature hard surface flooring. Located in a picturesque farmhouse-style community with sweeping views of Sawnee Mountain, this home provides access to a range of amenities, including a pool, cabana, park, playground, and gated entry for added privacy. Don't miss your chance - come see us today!

**Want to Know More
About This Home?**

CONTACT OUR COMMUNITY SALES MANAGER

NONE

Call Us @ 470.456.9551



FIRST FLOOR

Elevation D

Want to Know More
About This Home?

CONTACT OUR COMMUNITY SALES MANAGER

NONE

Call Us @ 470.456.9551



SECOND FLOOR

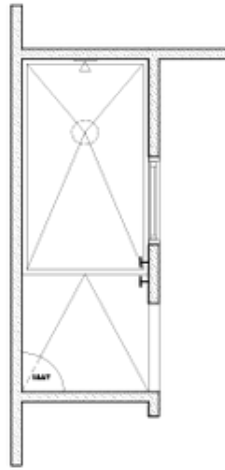
Elevation D

Want to Know More
About This Home?

CONTACT OUR COMMUNITY SALES MANAGER

NONE

Call Us @ 470.456.9551



OPT Owner's Walk-In Shower

OPTIONS

Want to Know More
About This Home?

CONTACT OUR COMMUNITY SALES MANAGER

NONE

Call Us @ 470.456.9551