




PRICED AT
\$673,645

 2273 Sq Ft

 3 Beds

 2.5 Baths

 2 Car Garage

 2.0 Story

Welcome to the newest Providence Group community, Palisades, an exclusive gated community set against the backdrop of stunning mountain views. This beautiful new home features 3 bedrooms and 2.5 baths, thoughtfully designed to enhance your living experience with its open-concept layout along with 10-foot ceilings throughout the main floor. The covered and extended patios provide an ideal space for relaxation or entertaining. Mudroom included from entry to garage. Upstairs, the spacious owner's suite boasts a 10-foot tray ceiling and a luxurious en-suite bathroom with a walk-in shower with drying area for ultimate comfort and privacy. Includes a Loft at the top of the stairs for an office or Media room. Situated just 1.5 miles from Interstate 400, this home offers quick access to the new Cumming City Center, where you'll find charming boutiques and unique dining options. Additionally, the proximity to Lake Lanier provides abundant opportunities for outdoor activities and enjoyment. With its inviting farmhouse-style exterior and carefully crafted interior, this home combines modern conveniences with the peacefulness of mountain living. Expected Complete Date is September/October 2025.

**Want to Know More
About This Home?**

CONTACT OUR COMMUNITY SALES MANAGER

NONE

Call Us @ 470.456.9551



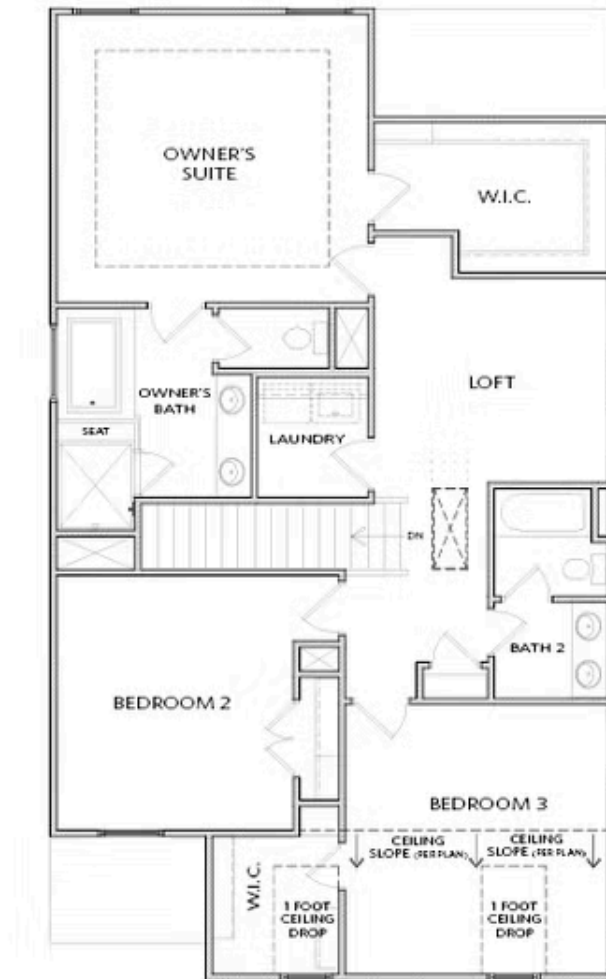
Elevation C

Want to Know More
About This Home?

CONTACT OUR COMMUNITY SALES MANAGER

NONE

Call Us @ 470.456.9551



SECOND FLOOR

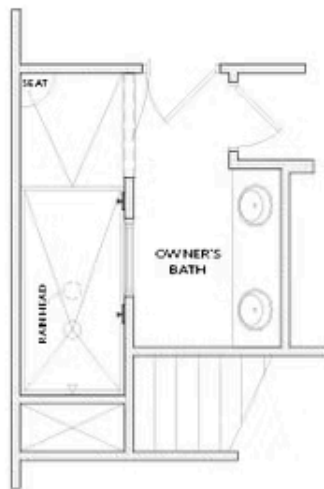
Elevation C

Want to Know More
About This Home?

CONTACT OUR COMMUNITY SALES MANAGER

NONE

Call Us @ 470.456.9551



OPT Walk-In Shower

Want to Know More
About This Home?

CONTACT OUR COMMUNITY SALES MANAGER

NONE

Call Us @ 470.456.9551