



PRICED AT  
**\$681,260**

 **2453 Sq Ft**

 **4 Beds**

 **3.0 Baths**

 **2 Car Garage**

 **2.0 Story**

**Spring in a New Home! \$30,000 promotion is reflected in the price and has been applied to the listing for contracts in March 2025. Welcome to the Palisades, introducing the Carter Floorplan, a stunning modern farmhouse 2 story residence in an exclusive gated entrance community, positioned high to offer spectacular views. This home featuring 4 bedrooms and 3 bathrooms, with thoughtful design elements throughout. The main level boasts a convenient bedroom with a full bathroom featuring a standing shower, an inviting open family room seamlessly connecting to a gourmet kitchen equipped with wall oven/microwave and stainless steel appliances. The foyer includes a practical drop zone for shoes and bags, while 10-foot ceilings and 8-foot doors create a sense of grandeur. On the second level, you'll find the luxurious owner's suite with a 10-foot tray ceiling, providing a peaceful retreat. The media room is also located on this floor, perfect for entertainment and relaxation. Enjoy outdoor living with a covered patio, and take advantage of the community amenities, including a pool, park, and playground. Located just a few miles from Interstate 400, 15 minutes from Lake Lanier, and less than 2 miles from Cumming City Center with its boutique shopping and ...**

**Want to Know More  
About This Home?**

**CONTACT OUR COMMUNITY SALES MANAGER**

**NONE**

**Call Us @ 470.456.9551**



FIRST FLOOR

Elevation C & D

Want to Know More  
About This Home?

CONTACT OUR COMMUNITY SALES MANAGER

**NONE**

Call Us @ 470.456.9551



SECOND FLOOR

Elevation C

Want to Know More  
About This Home?

CONTACT OUR COMMUNITY SALES MANAGER

**NONE**

Call Us @ 470.456.9551



SECOND FLOOR

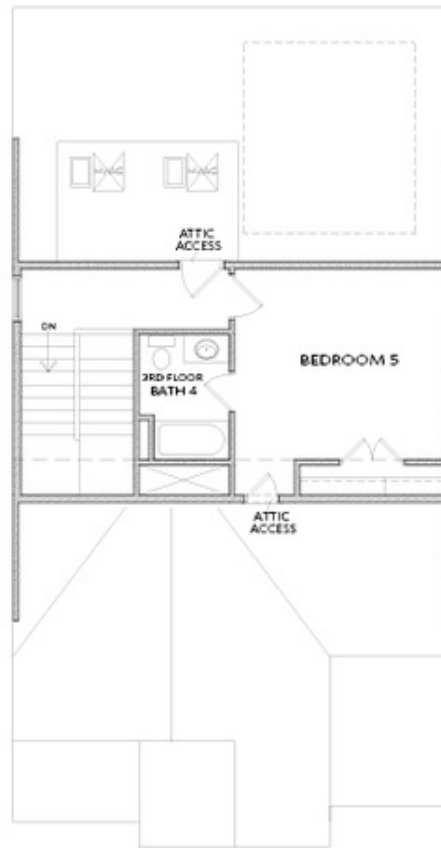
Elevation D

Want to Know More  
About This Home?

CONTACT OUR COMMUNITY SALES MANAGER

**NONE**

Call Us @ 470.456.9551



OPT THIRD FLOOR

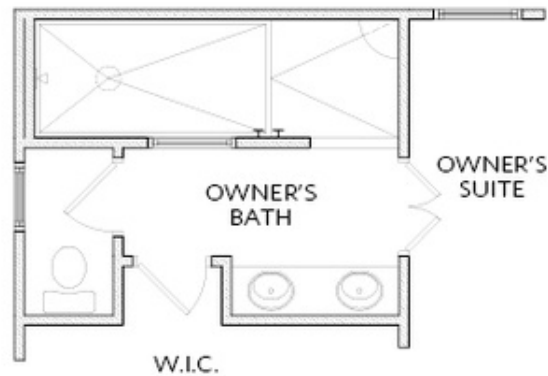
Elevation C & D

Want to Know More  
About This Home?

CONTACT OUR COMMUNITY SALES MANAGER

**NONE**

Call Us @ 470.456.9551



OPT Owner's Walk-In Shower

OPTIONS

Want to Know More  
About This Home?

CONTACT OUR COMMUNITY SALES MANAGER

**NONE**

Call Us @ 470.456.9551