



PRICED AT
\$710,435

 2552 Sq Ft

 4 Beds

 3.5 Baths

 2 Car Garage

 3.0 Story

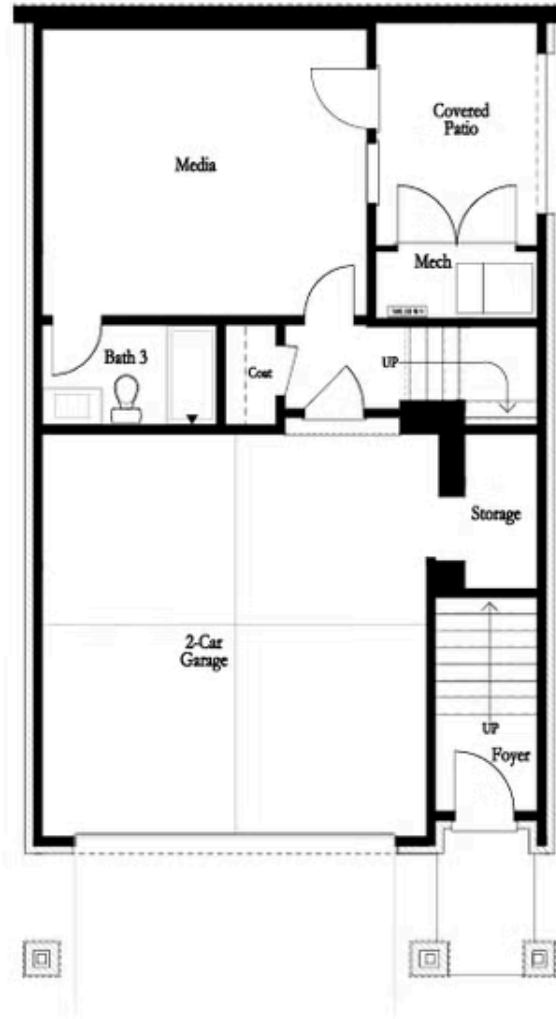
Spring into a New Home! Welcome to Palisades, an exclusive mountain-top community where luxury living meets stunning panoramic views. Introducing The Aspen II, a brand-new, three-story, 4-bedroom, 3.5-bathroom home designed for those who appreciate space, style, and tranquility. This thoughtfully crafted residence offers an expansive living experience with breathtaking views of the surrounding mountaintops and the town of Cumming. The lower level features a private bedroom and full bathroom, perfect for guests, complete with its own walkout covered patio and a fenced-in courtyard—offering a peaceful retreat separate from the backyard. On the main level, you'll find an open and airy living space with plenty of natural light streaming through oversized windows. The family room opens to a Charleston-style front porch, ideal for enjoying the outdoors. At the rear of the home, the gourmet kitchen boasts 42" soft-close cabinetry, under-cabinet lighting, stainless steel appliances, and quartz countertops. The adjacent dining area provides easy access to a covered deck, perfect for outdoor dining and relaxation, overlooking the beautiful backyard. Upstairs, the owner's retreat offers a serene escape with sweeping views of Sawnee Mountain through large, picture windows. This level also features two additional bedrooms and a conveniently located laundry room. Positioned just ...

**Want to Know More
About This Home?**

CONTACT OUR COMMUNITY SALES MANAGER

NONE

Call Us @ 470.456.9551



BASEMENT

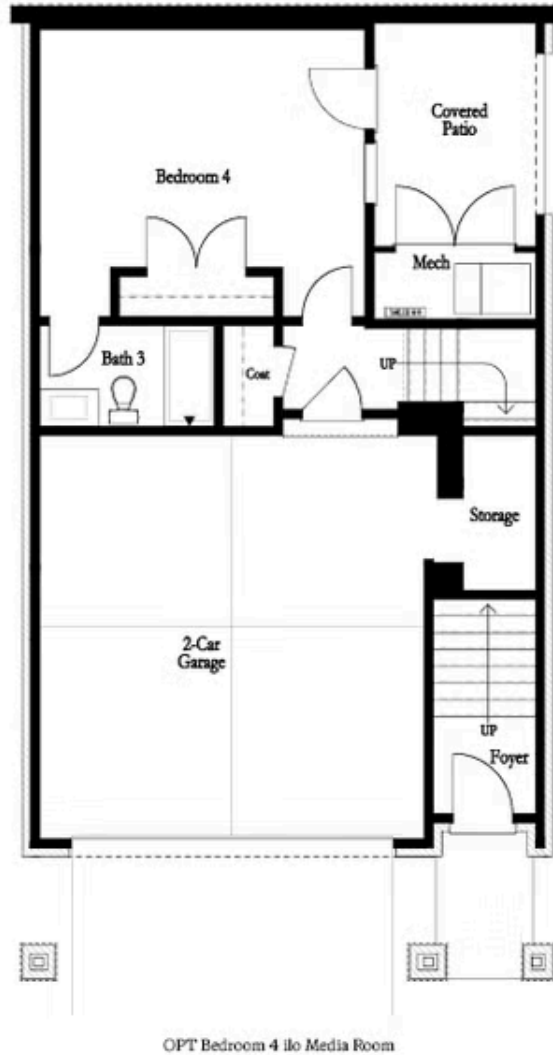
Elevation G & H

Want to Know More
About This Home?

CONTACT OUR COMMUNITY SALES MANAGER

NONE

Call Us @ 470.456.9551



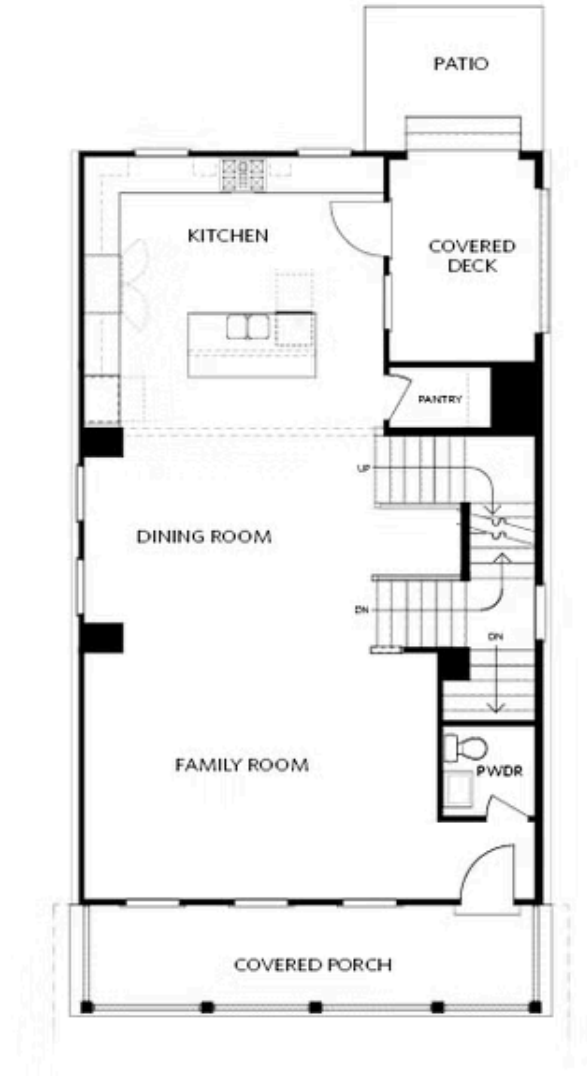
OPTIONAL BASEMENT

Want to Know More
About This Home?

CONTACT OUR COMMUNITY SALES MANAGER

NONE

Call Us @ 470.456.9551



FIRST FLOOR
KITCHEN REAR

Elevation G & H

Want to Know More
About This Home?

CONTACT OUR COMMUNITY SALES MANAGER

NONE

Call Us @ 470.456.9551



FIRST FLOOR
KITCHEN MIDDLE

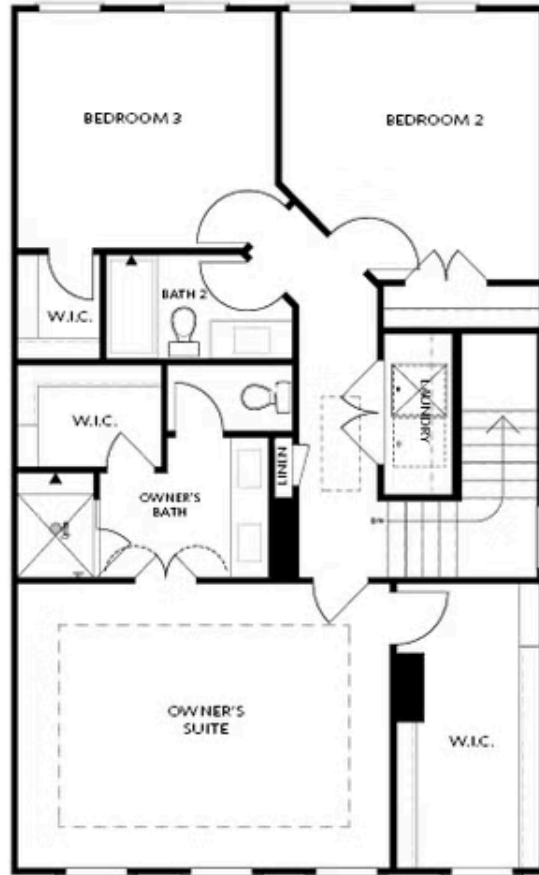
Elevation G & H

Want to Know More
About This Home?

CONTACT OUR COMMUNITY SALES MANAGER

NONE

Call Us @ 470.456.9551



SECOND FLOOR

Elevation G & H

Want to Know More
About This Home?

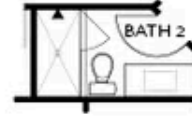
CONTACT OUR COMMUNITY SALES MANAGER

NONE

Call Us @ 470.456.9551



OPT Shower on Terrace Bath 3



OPT Shower Second Floor Bath 2



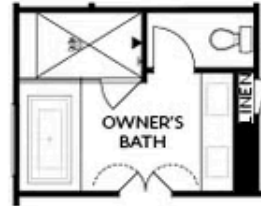
OPT Walk-In Shower



OPT linear Fireplace



OPT Fireplace



OPT Tub/Shower Combo

OPTIONS

Want to Know More
 About This Home?

CONTACT OUR COMMUNITY SALES MANAGER

NONE

Call Us @ 470.456.9551