



PRICED AT  
**\$710,250**

 **2552 Sq Ft**

 **4 Beds**

 **3.5 Baths**

 **2 Car Garage**

 **3.0 Story**

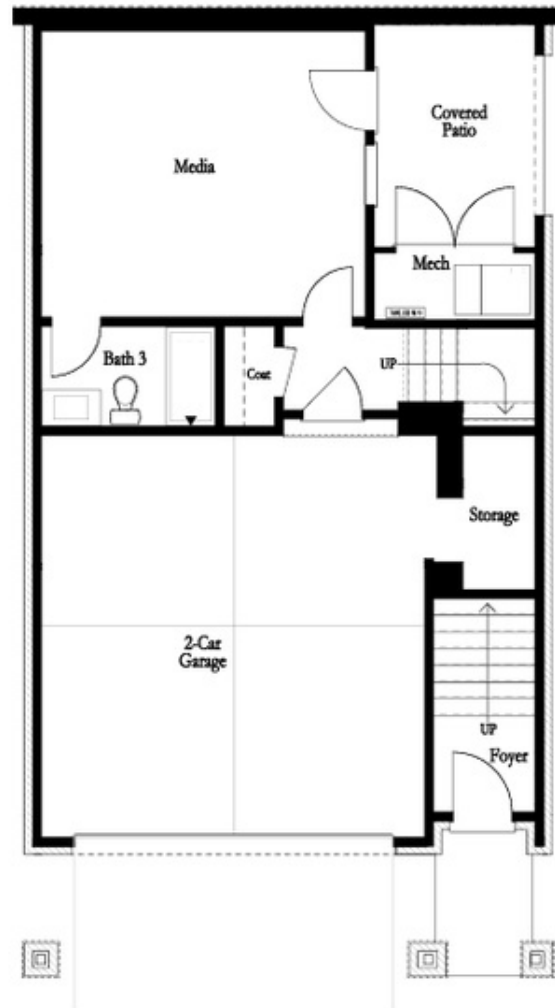
**Introducing The Aspen II at Palisades: Mountain-Top Luxury Living Escape to Palisades, a prestigious, hilltop community where modern elegance meets breathtaking mountain views. Nestled in this exclusive enclave, The Aspen II is a brand-new, three-story home that redefines luxury with 4 spacious bedrooms and 3.5 bathrooms, offering a lifestyle of peace, comfort, and style. Designed for Comfort and Convenience On the lower level, you'll find a private bedroom and full bathroom, ideal for guests or extended family. It features its own covered patio and fenced-in courtyard, providing a quiet, secluded space away from the main backyard. Open, Airy, and Full of Light Step onto the main floor, where a bright and airy living space awaits. With oversized windows flooding the home with natural light, the family room opens directly onto a charming Charleston-style front porch—perfect for relaxing outdoors. The gourmet kitchen is a culinary dream, with 42" soft-close cabinets, under-cabinet lighting, premium stainless steel appliances, and elegant quartz countertops. Adjacent to the kitchen is a dining area with easy access to a covered deck, ideal for alfresco dining and unwinding while overlooking the serene backyard. A Retreat for the Owner The upper floor is dedicated to your personal retreat—featuring an ...**

**Want to Know More  
About This Home?**

**CONTACT OUR COMMUNITY SALES MANAGER**

**NONE**

**Call Us @ 470.456.9551**



BASEMENT

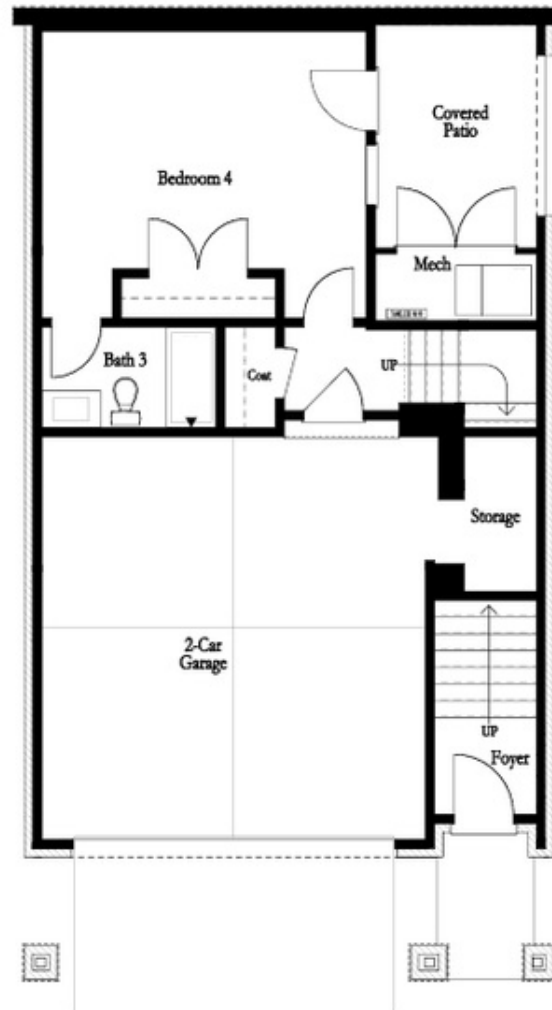
Elevation G & H

Want to Know More  
About This Home?

CONTACT OUR COMMUNITY SALES MANAGER

**NONE**

Call Us @ 470.456.9551



OPT Bedroom 4 ilo Media Room

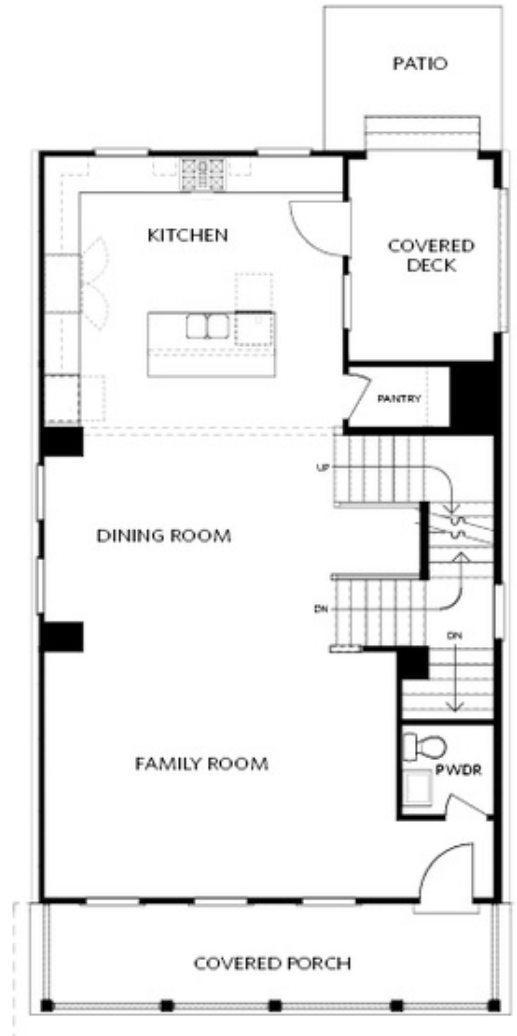
OPTIONAL BASEMENT

Want to Know More  
About This Home?

CONTACT OUR COMMUNITY SALES MANAGER

**NONE**

Call Us @ 470.456.9551



FIRST FLOOR  
KITCHEN REAR

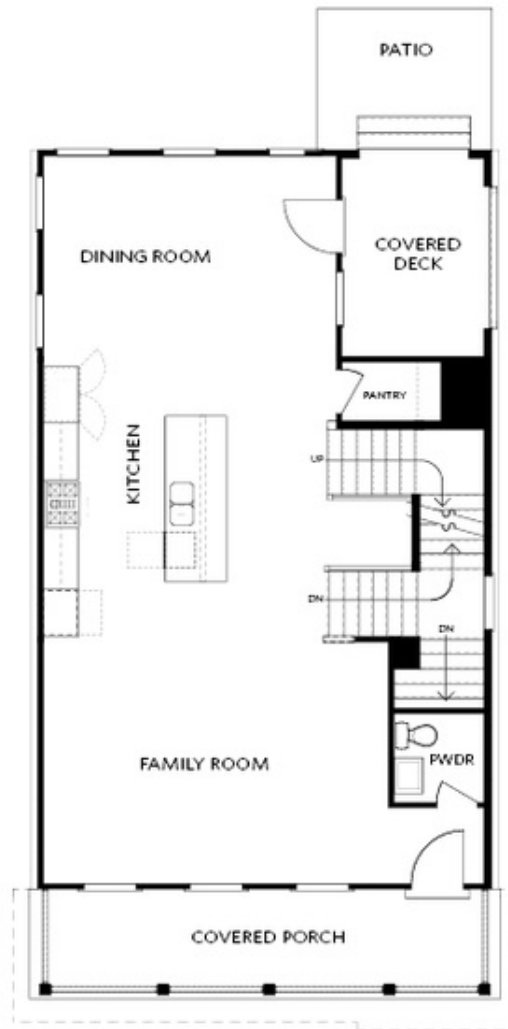
Elevation G & H

Want to Know More  
About This Home?

CONTACT OUR COMMUNITY SALES MANAGER

**NONE**

Call Us @ 470.456.9551



FIRST FLOOR  
KITCHEN MIDDLE

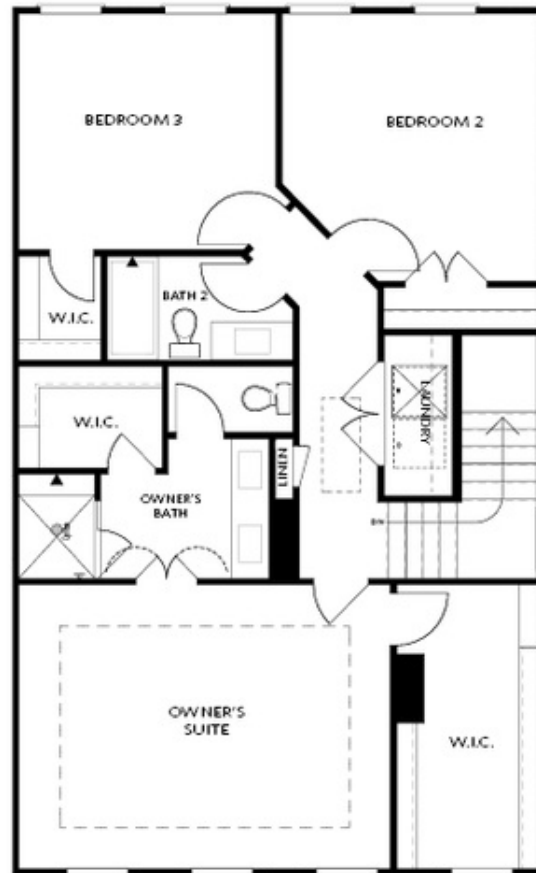
Elevation G & H

Want to Know More  
About This Home?

CONTACT OUR COMMUNITY SALES MANAGER

**NONE**

Call Us @ 470.456.9551



SECOND FLOOR

Elevation G & H

Want to Know More  
About This Home?

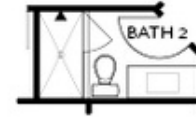
CONTACT OUR COMMUNITY SALES MANAGER

**NONE**

Call Us @ 470.456.9551



OPT Shower on Terrace Bath 3



OPT Shower Second Floor Bath 2



OPT Walk-In Shower



OPT Tub/Shower Combo



OPT linear Fireplace



OPT Fireplace

OPTIONS

Want to Know More  
 About This Home?

CONTACT OUR COMMUNITY SALES MANAGER

**NONE**

Call Us @ 470.456.9551