



PRICED AT
\$723,605

 2552 Sq Ft

 4 Beds

 3.5 Baths

 2 Car Garage

 3.0 Story

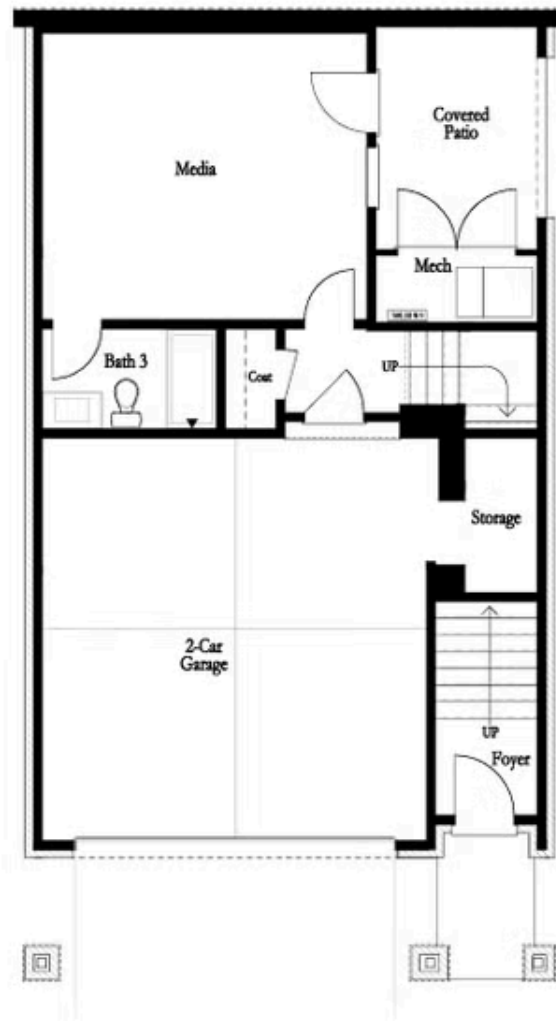
Fall Into Savings with \$45K. Personalize Your Space with Your Style – use it toward low rates, upgrades, appliances, closing costs & more. Ends September 30, 2025. Additional Promotions Available with Quick Closing! Welcome to Palisades, an exclusive community where modern design meets panoramic views and tranquil surroundings. Nestled in this refined enclave, The Aspen II is a brand-new, three-story residence offering 4 spacious bedrooms and 3.5 bathrooms, designed for those who value comfort, sophistication, and effortless living. Crafted for Everyday Ease and Comfort The terrace level offers a private bedroom and full bath—perfect for guests, in-laws, or a quiet home office. With its own covered patio and fenced courtyard, it's a secluded retreat that offers versatility and privacy beyond the main living areas. Bright, Open Living Spaces On the main floor, natural light pours through oversized windows, creating a warm and inviting ambiance. The family room seamlessly connects to a charming Charleston-style front porch, ideal for enjoying morning coffee or evening breezes. A gourmet kitchen awaits, complete with 42" soft-close cabinetry, under-cabinet lighting, quartz countertops, and premium stainless steel appliances. Adjacent to the kitchen, the dining area opens to a covered deck—perfect for outdoor dining or peaceful relaxation overlooking ...

**Want to Know More
About This Home?**

CONTACT OUR COMMUNITY SALES MANAGER

NONE

Call Us @ 470.456.9551



BASEMENT

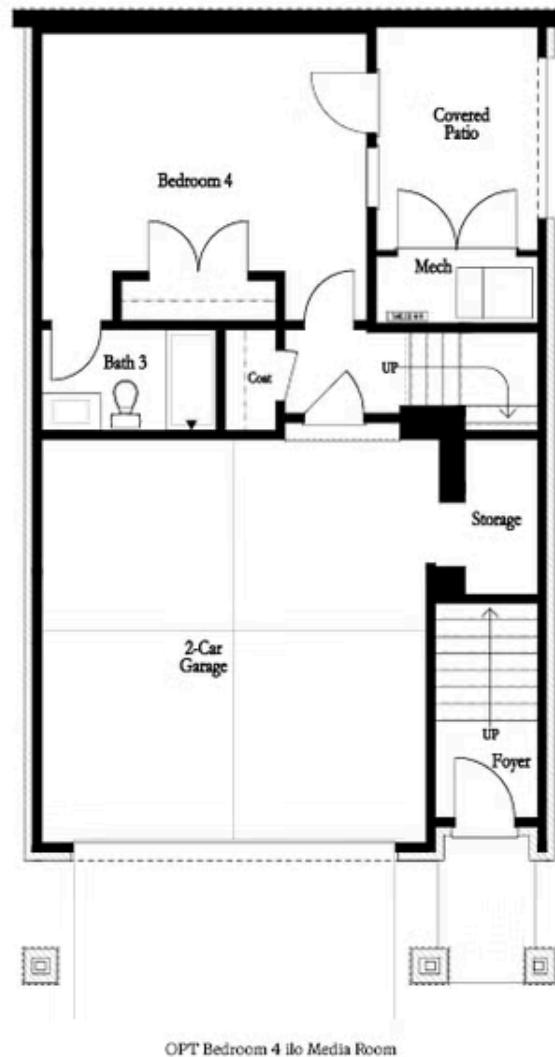
Elevation G & H

Want to Know More
About This Home?

CONTACT OUR COMMUNITY SALES MANAGER

NONE

Call Us @ 470.456.9551



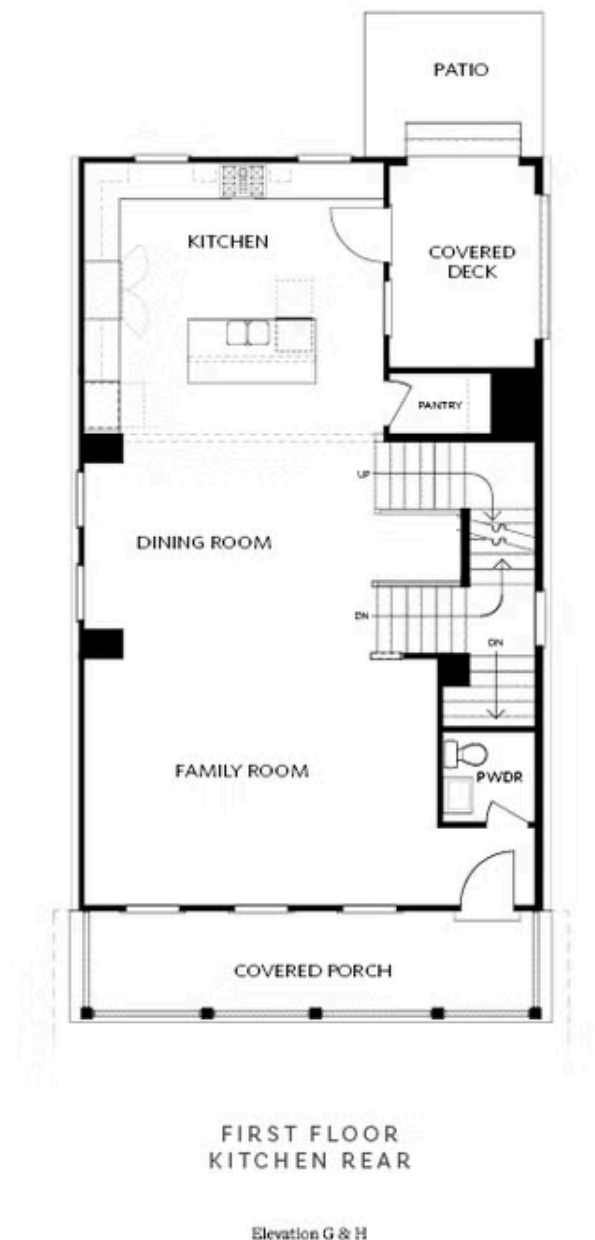
OPTIONAL BASEMENT

Want to Know More
About This Home?

CONTACT OUR COMMUNITY SALES MANAGER

NONE

Call Us @ 470.456.9551



Want to Know More
About This Home?

CONTACT OUR COMMUNITY SALES MANAGER

NONE

Call Us @ 470.456.9551



FIRST FLOOR
KITCHEN MIDDLE

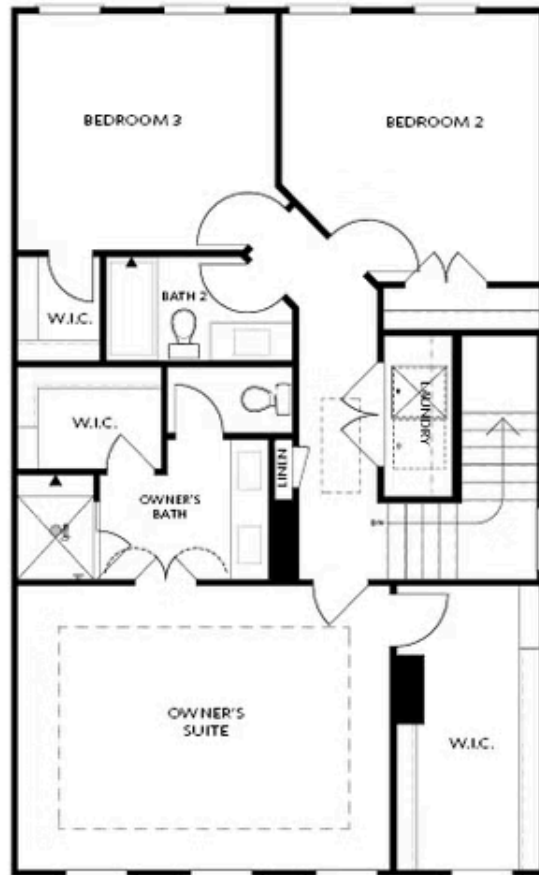
Elevation G & H

Want to Know More
About This Home?

CONTACT OUR COMMUNITY SALES MANAGER

NONE

Call Us @ 470.456.9551



SECOND FLOOR

Elevation G & H

Want to Know More
About This Home?

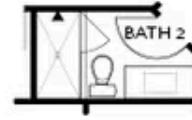
CONTACT OUR COMMUNITY SALES MANAGER

NONE

Call Us @ 470.456.9551



OPT Shower on Terrace Bath 3



OPT Shower Second Floor Bath 2



OPT Walk-In Shower



OPT Tub/Shower Combo



OPT linear Fireplace



OPT Fireplace

OPTIONS

Want to Know More
About This Home?

CONTACT OUR COMMUNITY SALES MANAGER

NONE

Call Us @ 470.456.9551